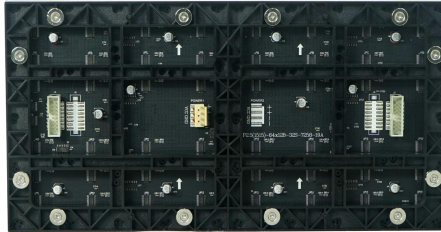
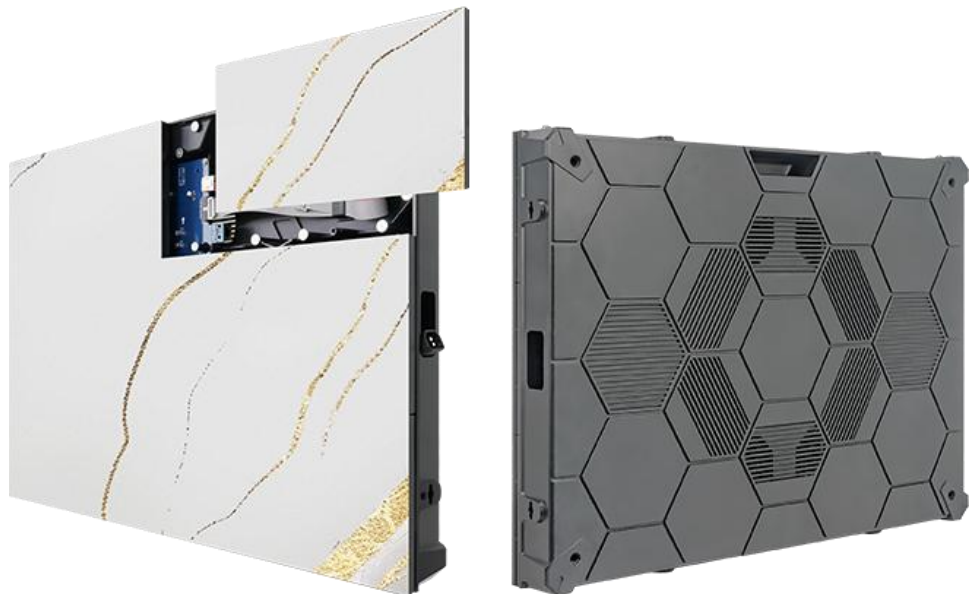


P1.25 indoor Die-Cast Magnesium Cabinet Texture Led Display Specification



Module



Cabinet

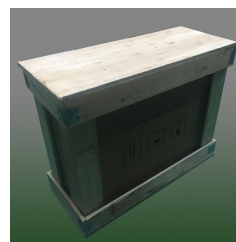
- ◆ **Premium Textured:** The module surface features a professional textured tech, delivering the unique and high-end aesthetic for differentiated visual appeal.
- ◆ **Art when off, display when on:** Blends seamlessly into the wall when powered off; transforms into a high-definition display when powered on—combining decoration and display in one.
- ◆ **Good compatibility:** The cabinet can be quickly replaced with module of the pixel pitch from P1.25 to P4, and images can be upgraded to higher quality with lower cost.
- ◆ **Ultra-light and thin:** Magnesium alloy cabinet, light-weighted, thin, beautiful appearance;
- ◆ **Wall-mounted installation:** modules, power supplies, and system cards can be fully maintained from the front; space-saving, suitable for high-end commercial display occasions.
- ◆ **Suitable for creative restaurants, retail reception areas, home theaters, hotel lobbies, exhibition halls, etc.**

Technical Parameters :

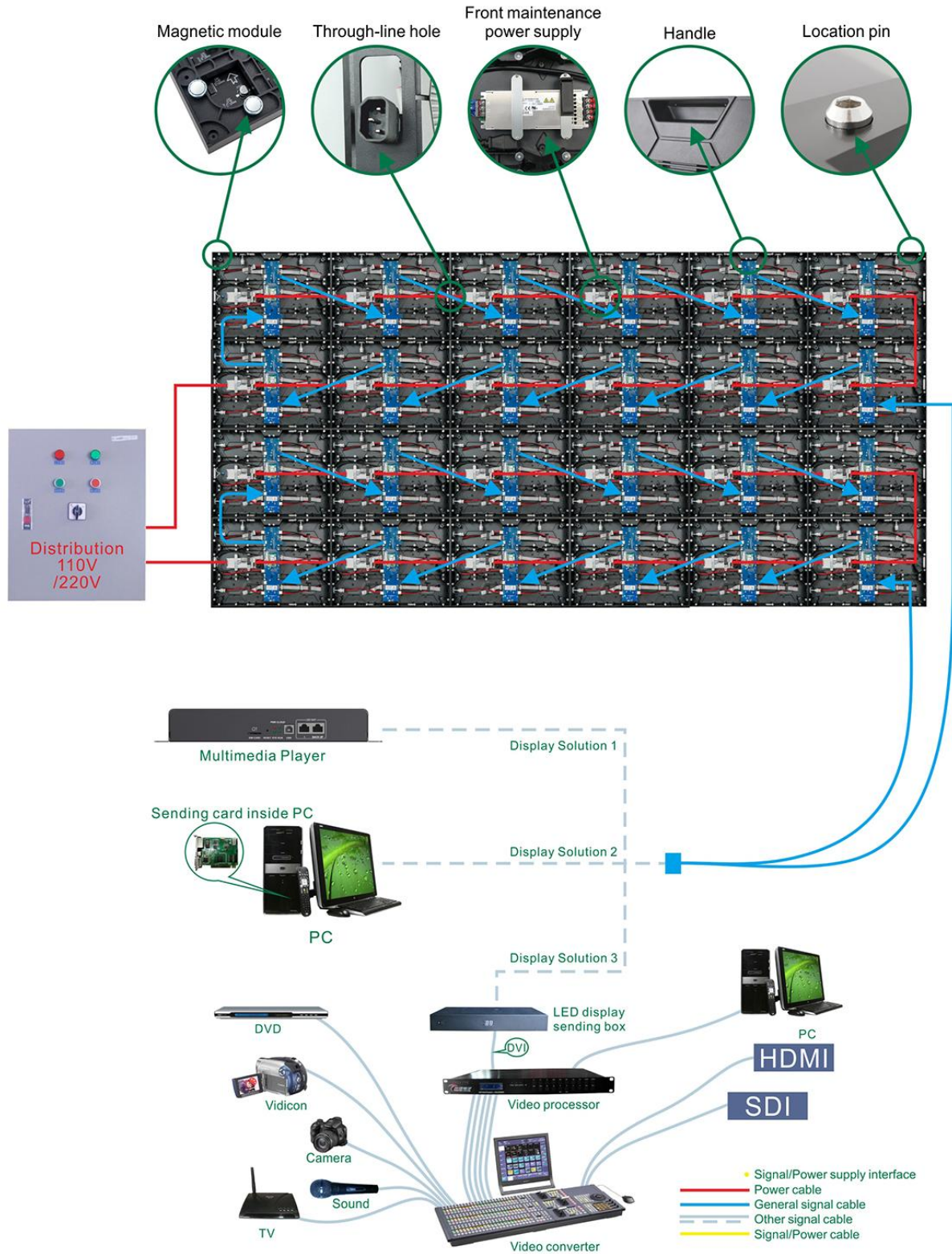
	Item	Specification Parameter
Module Parameter	Pixel Pitch、Resolution rate、size	1.25mm、256*128、320*160*15mm
	Pixel color、 Pixel LED	1R1G1B、 SMD1010
	Working voltage、 Module Power	DC4.5V、 ≤20W
	Driving IC、 Driving way	1065S、 1/64S
	HUB	HUB320
	Cabinet Parameter	Material、 Cabinet Weight(kg/Cabinet)
Resolution rate、 size、 Module quantity		512*384 Dots、 640*480*70mm、 2*3
Density		640000 Dots/m ²
White balance 、 Color temperature		300~600 CD/m ² 、 6000K~8000K
view angel、 Non-Flatness、 Module interval		H/V: 120° /120° 、 <0.2mm、 <0.2mm
Maximal power/m ² 、 Average power/m ²		≤450W/m ² 、 ≤150W/m ²
Frame frequency、 Refresh frequency、 Gray grade		60Hz、 3840Hz、 ≥13bit
Control system、 System supports		Novastar/Colorlight, Windows
Working temperature、 Protection grade		-20~50°C、 Front/Back: IP40
*Reference information, different configurations, different parameters		

Package Parameters :

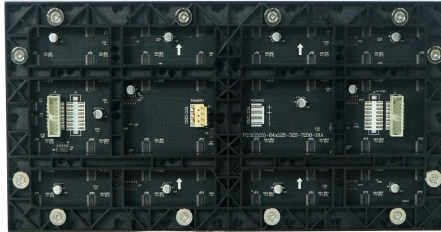
Gross Weight (kg)	49kg (Estimated data,6pcs /Case)
Outer Package Size	720*630*560mm (Estimated data,6pcs /Case)
Packing Material	Wooden bracket + paper packaging + pearl cotton



Assembly Sketch Map/Power Cable And Signal Cable Connection Sketch Map:



P1.53 indoor Die-Cast Magnesium Cabinet Texture Led Display Specification



Module



Cabinet

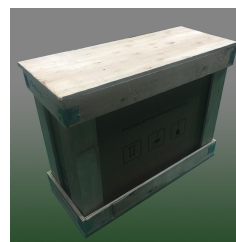
- ◆ **Premium Textured:** The module surface features a professional textured tech, delivering the unique and high-end aesthetic for differentiated visual appeal.
- ◆ **Art when off, display when on:** Blends seamlessly into the wall when powered off; transforms into a high-definition display when powered on—combining decoration and display in one.
- ◆ **Good compatibility:** The cabinet can be quickly replaced with module of the pixel pitch from P1.25 to P4, and images can be upgraded to higher quality with lower cost.
- ◆ **Ultra-light and thin:** Magnesium alloy cabinet, light-weighted, thin, beautiful appearance;
- ◆ **Wall-mounted installation:** modules, power supplies, and system cards can be fully maintained from the front; space-saving, suitable for high-end commercial display occasions.
- ◆ **Suitable for creative restaurants, retail reception areas, home theaters, hotel lobbies, exhibition halls, etc.**

Technical Parameters :

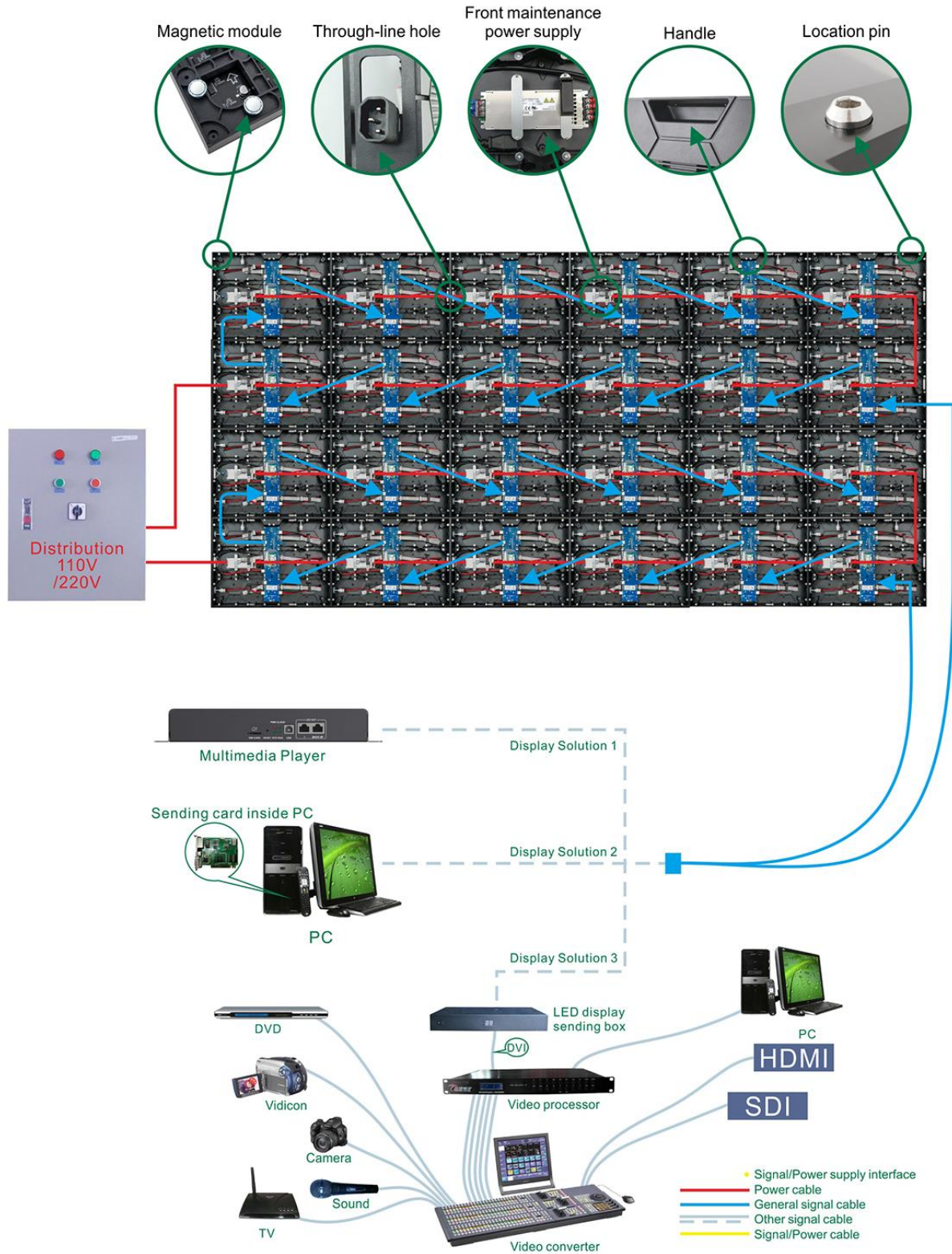
	Item	Specification Parameter
Module Parameter	Pixel Pitch、Resolution rate、size	1.53mm、208*104、320*160*15mm
	Pixel color、 Pixel LED	1R1G1B、 SMD1212
	Working voltage、 Module Power	DC4.5V、 ≤25W
	Driving IC、 Driving way	1065S、 1/52S
	HUB	HUB75
Cabinet Parameter	Material、 Cabinet Weight(kg/Cabinet)	Magnesium Alloy、 7.5kg/Cabinet
	Resolution rate、 size、 Module quantity	416*312Dots、 640*480*70mm、 2*3
	Density	422500 Dots/m ²
	White balance 、 Color temperature	300~600 CD/m ² 、 6000K-8000K
	view angel、 Non-Flatness、 Module interval	H/V: 120° /120° 、 <0.2mm、 <0.2mm
	Maximal power/m ² 、 Average power/m ²	≤550W/m ² 、 ≤180W/m ²
	Frame frequency、 Refresh frequency、 Gray grade	60Hz、 3840Hz、 ≥13bit
	Control system、 System supports	Novastar/Colorlight, Windows
	Working temperature、 Protection grade	-20~50°C、 Front/Back: IP40
*Reference information, different configurations, different parameters		

Package Parameters :

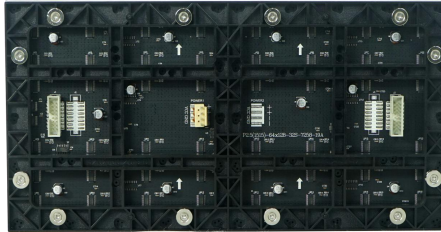
Gross Weight (kg)	49kg (Estimated data,6pcs /Case)
Outer Package Size	720*630*560mm (Estimated data,6pcs /Case)
Packing Material	Wooden bracket + paper packaging + pearl cotton



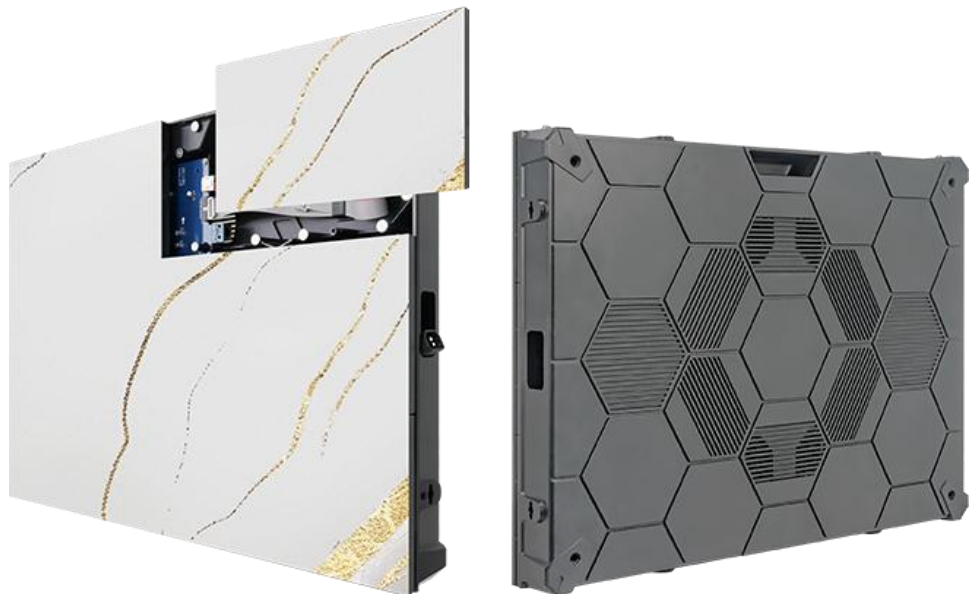
Assembly Sketch Map/Power Cable And Signal Cable Connection Sketch Map:



P1.86 indoor Die-Cast Magnesium Cabinet Texture Led Display Specification



Module



Cabinet

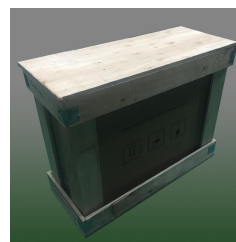
- ◆ **Premium Textured:** The module surface features a professional textured tech, delivering the unique and high-end aesthetic for differentiated visual appeal.
- ◆ **Art when off, display when on:** Blends seamlessly into the wall when powered off; transforms into a high-definition display when powered on—combining decoration and display in one.
- ◆ **Good compatibility:** The cabinet can be quickly replaced with module of the pixel pitch from P1.25 to P4, and images can be upgraded to higher quality with lower cost.
- ◆ **Ultra-light and thin:** Magnesium alloy cabinet, light-weighted, thin, beautiful appearance;
- ◆ **Wall-mounted installation:** modules, power supplies, and system cards can be fully maintained from the front; space-saving, suitable for high-end commercial display occasions.
- ◆ **Suitable for creative restaurants, retail reception areas, home theaters, hotel lobbies, exhibition halls, etc.**

Technical Parameters :

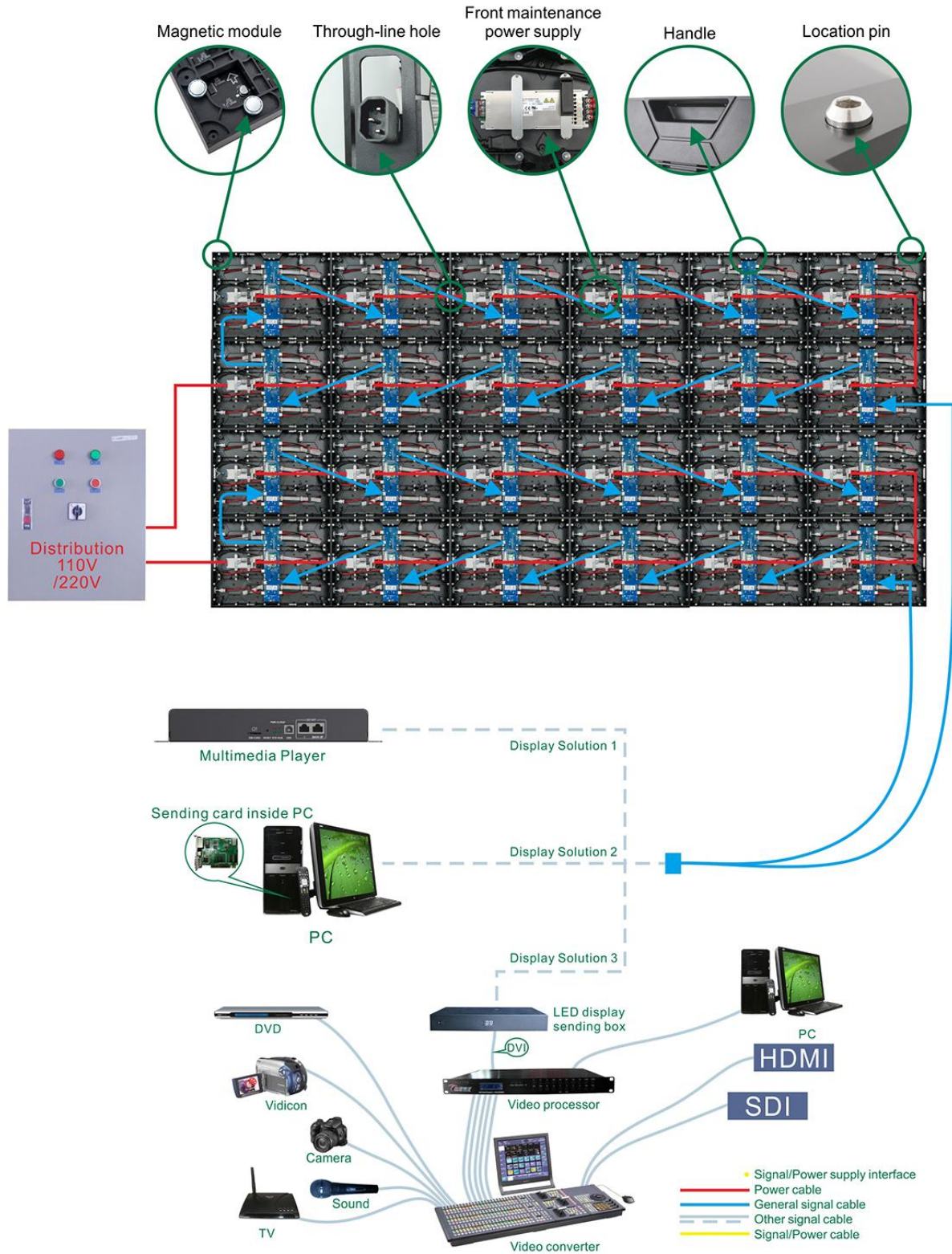
	Item	Specification Parameter
Module Parameter	Pixel Pitch、Resolution rate、size	1.86mm、172*86、320*160*15mm
	Pixel color、 Pixel LED	1R1G1B、 SMD1515
	Working voltage、 Module Power	DC4.5V、 ≤20W
	Driving IC、 Driving way	1065S、 1/43S
	HUB	HUB75
Cabinet Parameter	Material、 Cabinet Weight(kg/Cabinet)	Magnesium Alloy、 7.5kg/Cabinet
	Resolution rate、 size、 Module quantity	344*258Dots、 640*480*70mm、 2*3
	Density	288906 Dots/m ²
	White balance 、 Color temperature	300~600 CD/m ² 、 6000K-8000K
	view angel、 Non-Flatness、 Module interval	H/V: 120° /120° 、 <0.2mm、 <0.2mm
	Maximal power/m ² 、 Average power/m ²	≤450W/m ² 、 ≤150W/m ²
	Frame frequency、 Refresh frequency、 Gray grade	60Hz、 3840-7680Hz、 ≥13bit
	Control system、 System supports	Novastar/Colorlight, Windows
	Working temperature、 Protection grade	-20~50°C、 Front/Back: IP40
*Reference information, different configurations, different parameters		

Package Parameters :

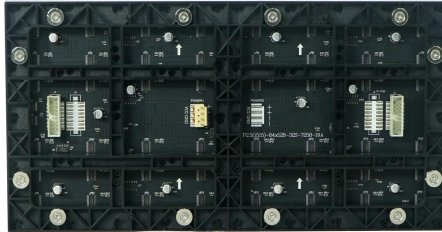
Gross Weight (kg)	49kg (Estimated data,6pcs /Case)
Outer Package Size	720*630*560mm (Estimated data,6pcs /Case)
Packing Material	Wooden bracket + paper packaging + pearl cotton



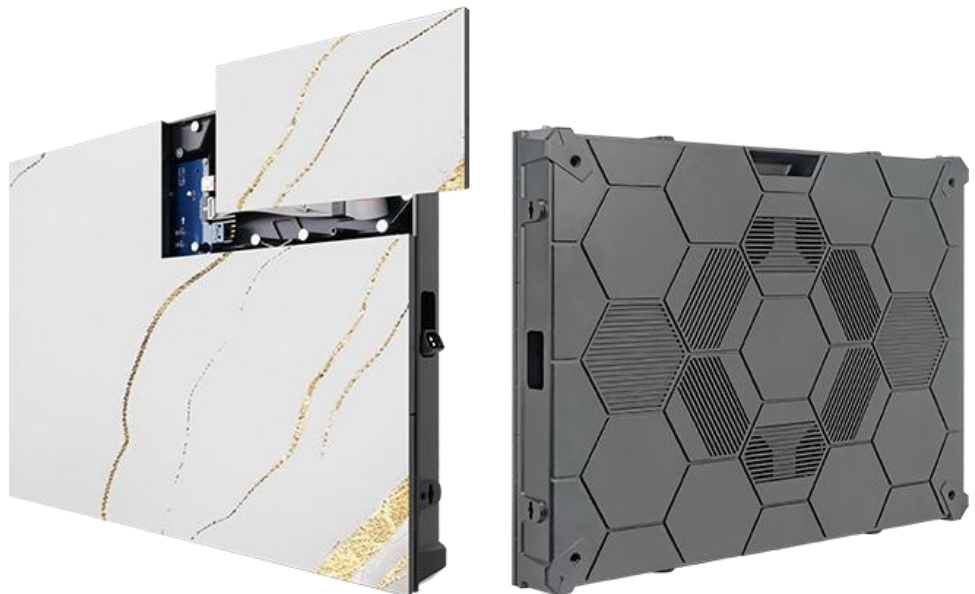
Assembly Sketch Map/Power Cable And Signal Cable Connection Sketch Map:



P2.5 indoor Die-Cast Magnesium Cabinet Texture Led Display Specification



Module



Cabinet

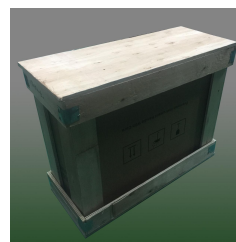
- ◆ **Premium Textured:** The module surface features a professional textured tech, delivering the unique and high-end aesthetic for differentiated visual appeal.
- ◆ **Art when off, display when on:** Blends seamlessly into the wall when powered off; transforms into a high-definition display when powered on—combining decoration and display in one.
- ◆ **Good compatibility:** The cabinet can be quickly replaced with module of the pixel pitch from P1.25 to P4, and images can be upgraded to higher quality with lower cost.
- ◆ **Ultra-light and thin:** Magnesium alloy cabinet, light-weighted, thin, beautiful appearance;
- ◆ **Wall-mounted installation:** modules, power supplies, and system cards can be fully maintained from the front; space-saving, suitable for high-end commercial display occasions.
- ◆ **Suitable for creative restaurants, retail reception areas, home theaters, hotel lobbies, exhibition halls, etc.**

Technical Parameters :

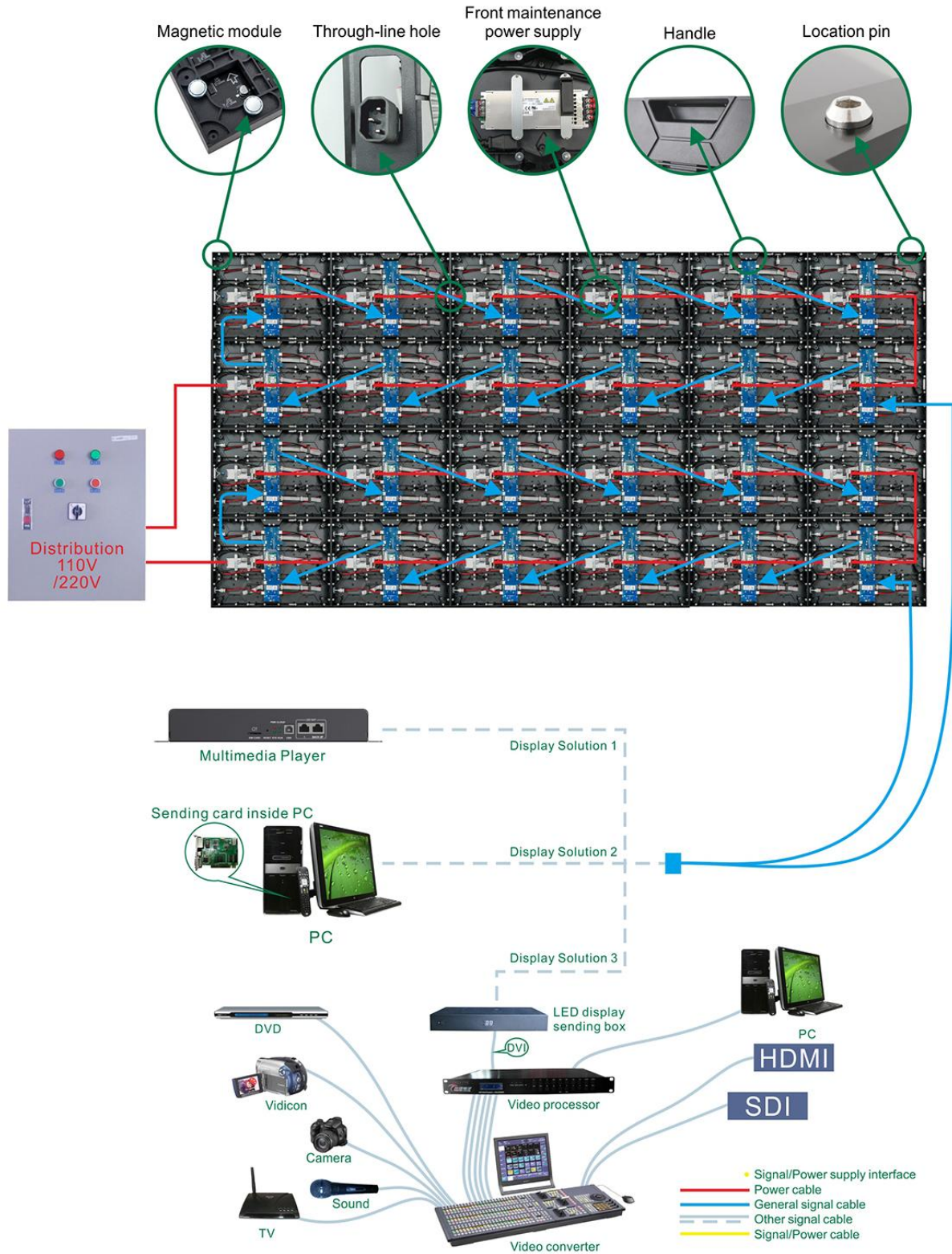
	Item	Specification Parameter
Module Parameter	Pixel Pitch、Resolution rate、size	2.5mm、128*64、320*160*17mm
	Pixel color、 Pixel LED	1R1G1B、 SMD2020
	Working voltage、 Module Power	DC4.5V、 ≤20W
	Driving IC、 Driving way	ICN2153S、 1/32S
	HUB	HUB75
Cabinet Parameter	Material、 Cabinet Weight(kg/Cabinet)	Magnesium Alloy、 7.5kg/Cabinet
	Resolution rate、 size、 Module quantity	256*192Dots、 640*480*70mm、 2*3
	Density	160000 Dots/m ²
	White balance 、 Color temperature	300~600 CD/m ² 、 6000K-8000K
	view angel、 Non-Flatness、 Module interval	H/V: 120° /120° 、 <0.2mm、 <0.2mm
	Maximal power/m ² 、 Average power/m ²	≤450W/m ² 、 ≤150W/m ²
	Frame frequency、 Refresh frequency、 Gray grade	60Hz、 3840-7680Hz、 14bit
	Control system、 System supports	Novastar/Colorlight, Windows
	Working temperature、 Protection grade	-20~50℃、 Front/Back: IP40
*Reference information, different configurations, different parameters		

Package Parameters :

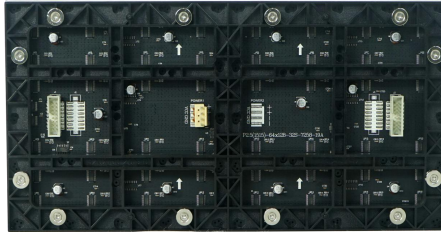
Gross Weight (kg)	49kg (Estimated data,6pcs /Case)
Outer Package Size	720*630*560mm (Estimated data,6pcs /Case)
Packing Material	Wooden bracket + paper packaging + pearl cotton



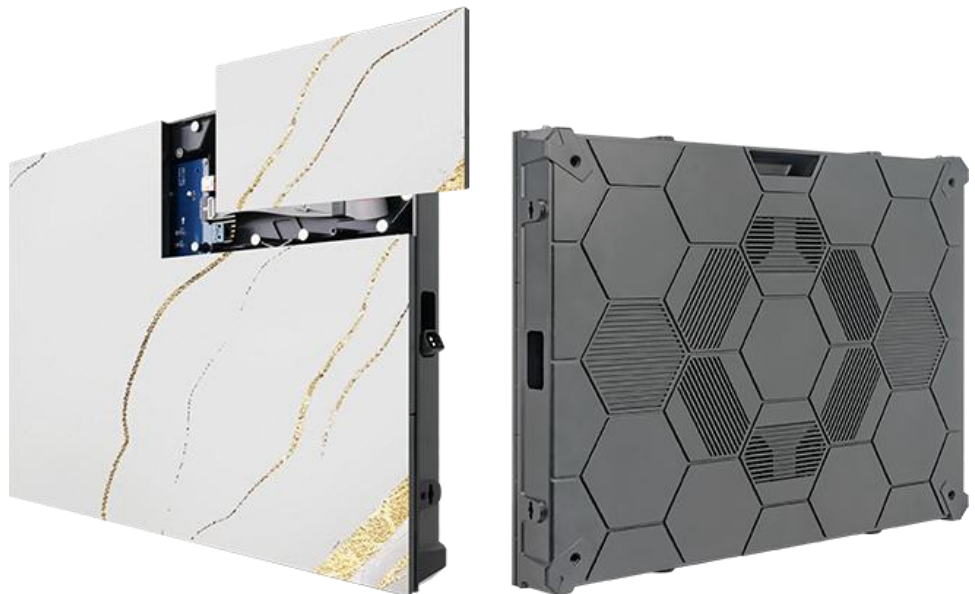
Assembly Sketch Map/Power Cable And Signal Cable Connection Sketch Map:



P2 indoor Die-Cast Magnesium Cabinet Texture Led Display Specification



Module



Cabinet

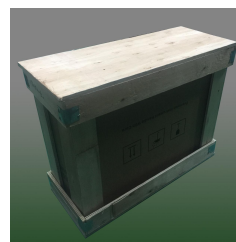
- ◆ **Premium Textured:** The module surface features a professional textured tech, delivering the unique and high-end aesthetic for differentiated visual appeal.
- ◆ **Art when off, display when on:** Blends seamlessly into the wall when powered off; transforms into a high-definition display when powered on—combining decoration and display in one.
- ◆ **Good compatibility:** The cabinet can be quickly replaced with module of the pixel pitch from P1.25 to P4, and images can be upgraded to higher quality with lower cost.
- ◆ **Ultra-light and thin:** Magnesium alloy cabinet, light-weighted, thin, beautiful appearance;
- ◆ **Wall-mounted installation:** modules, power supplies, and system cards can be fully maintained from the front; space-saving, suitable for high-end commercial display occasions.
- ◆ **Suitable for creative restaurants, retail reception areas, home theaters, hotel lobbies, exhibition halls, etc.**

Technical Parameters :

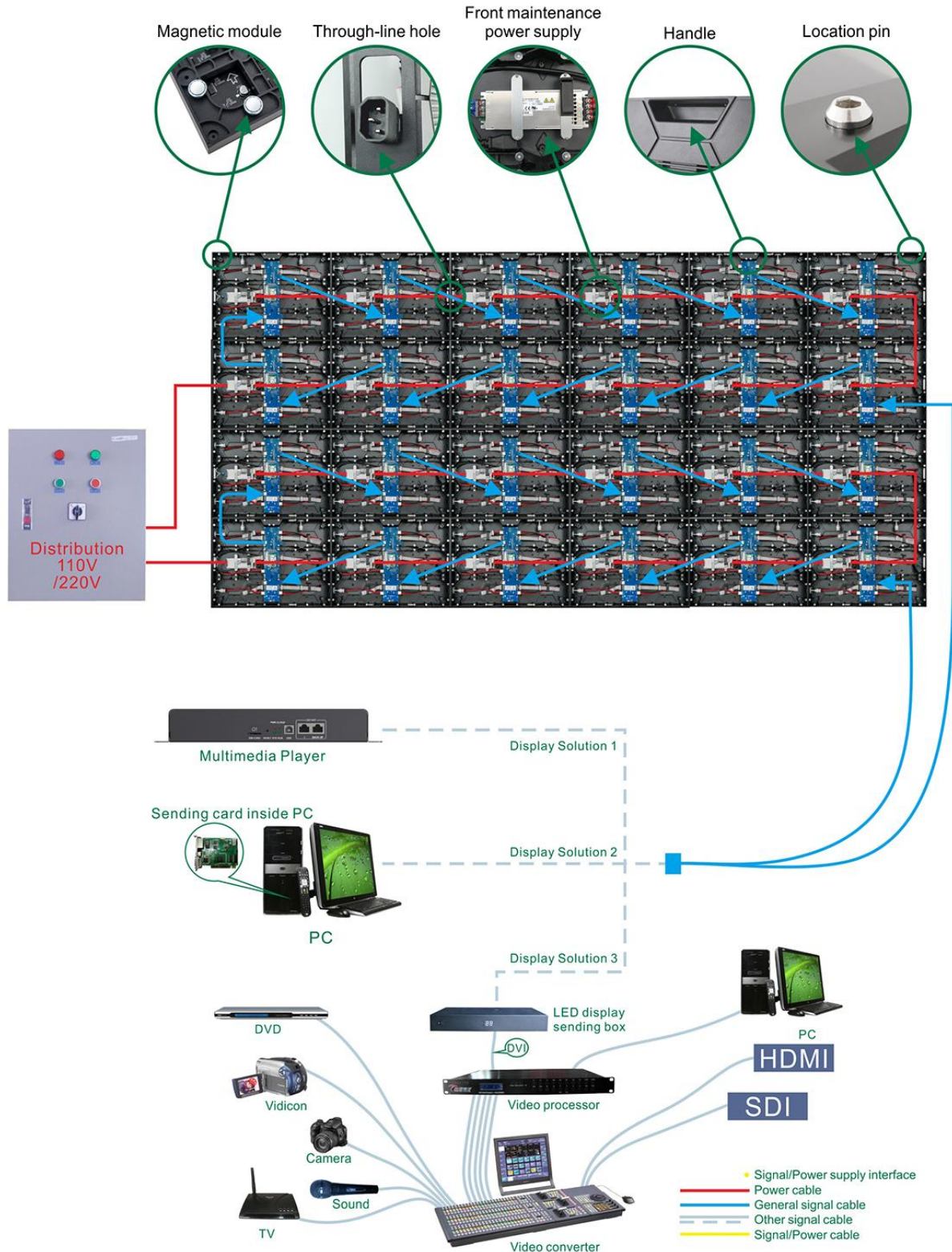
	Item	Specification Parameter
Module Parameter	Pixel Pitch、Resolution rate、size	2mm、160*80、320*160*15mm
	Pixel color、 Pixel LED	1R1G1B、 SMD1515
	Working voltage、 Module Power	DC4.5V、 ≤20W
	Driving IC、 Driving way	1065S、 1/40S
	HUB	HUB75
Cabinet Parameter	Material、 Cabinet Weight(kg/Cabinet)	Magnesium Alloy、 7.5kg/Cabinet
	Resolution rate、 size、 Module quantity	320*240Dots、 640*480*70mm、 2*3
	Density	250000 Dots/m ²
	White balance 、 Color temperature	300~600 CD/m ² 、 6000K-8000K
	view angel、 Non-Flatness、 Module interval	H/V: 120° /120° 、 <0.2mm、 <0.2mm
	Maximal power/m ² 、 Average power/m ²	≤450W/m ² 、 ≤150W/m ²
	Frame frequency、 Refresh frequency、 Gray grade	60Hz、 3840-7680Hz、 ≥13bit
	Control system、 System supports	Novastar/Colorlight, Windows
	Working temperature、 Protection grade	-20~50℃、 Front/Back: IP40
*Reference information, different configurations, different parameters		

Package Parameters :

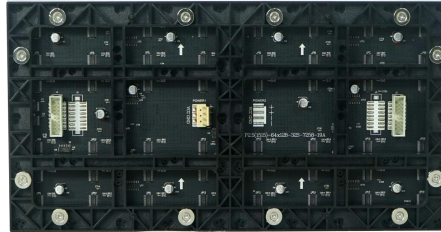
Gross Weight (kg)	49kg (Estimated data,6pcs /Case)
Outer Package Size	720*630*560mm (Estimated data,6pcs /Case)
Packing Material	Wooden bracket + paper packaging + pearl cotton



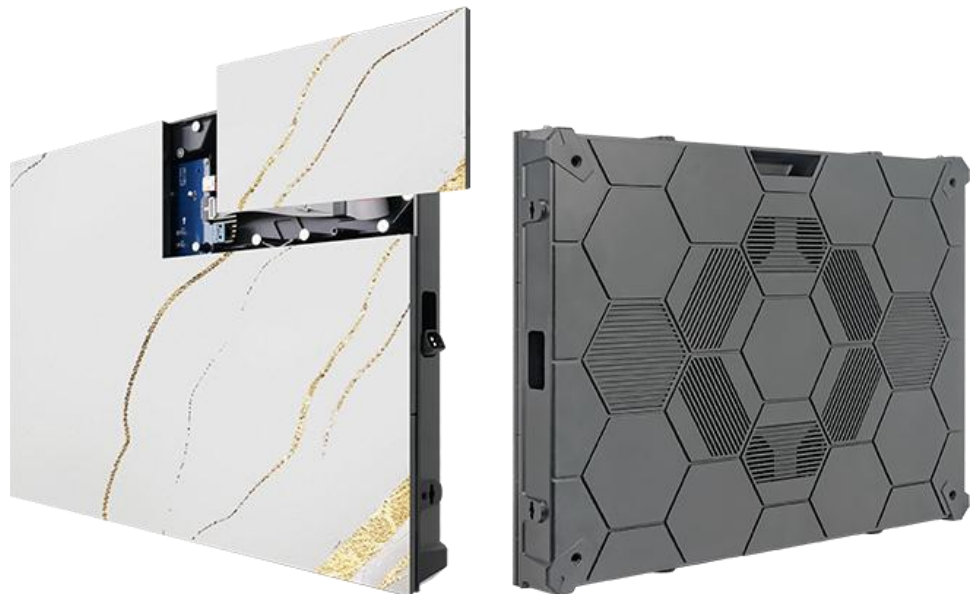
Assembly Sketch Map/Power Cable And Signal Cable Connection Sketch Map:



P3 indoor Die-Cast Magnesium Cabinet Texture Led Display Specification



Module



Cabinet

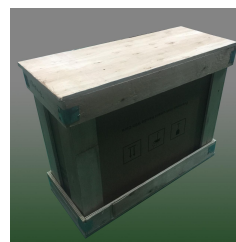
- ◆ **Premium Textured:** The module surface features a professional textured tech, delivering the unique and high-end aesthetic for differentiated visual appeal.
- ◆ **Art when off, display when on:** Blends seamlessly into the wall when powered off; transforms into a high-definition display when powered on—combining decoration and display in one.
- ◆ **Good compatibility:** The cabinet can be quickly replaced with module of the pixel pitch from P1.25 to P4, and images can be upgraded to higher quality with lower cost.
- ◆ **Ultra-light and thin:** Magnesium alloy cabinet, light-weighted, thin, beautiful appearance;
- ◆ **Wall-mounted installation:** modules, power supplies, and system cards can be fully maintained from the front; space-saving, suitable for high-end commercial display occasions.
- ◆ **Suitable for creative restaurants, retail reception areas, home theaters, hotel lobbies, exhibition halls, etc.**

Technical Parameters :

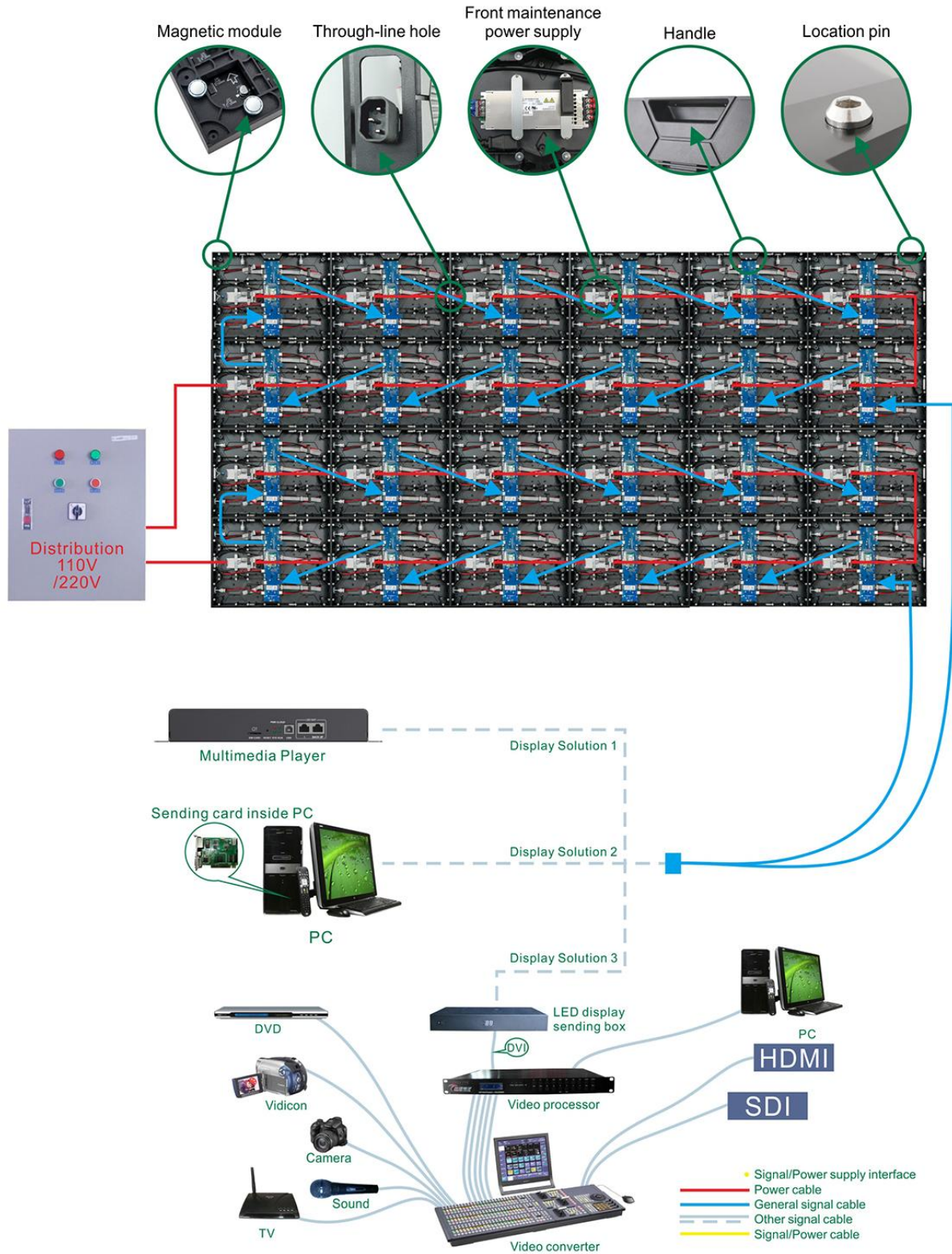
	Item	Specification Parameter
Module Parameter	Pixel Pitch、Resolution rate、size	3mm、104*52、320*160*18mm
	Pixel color、 Pixel LED	1R1G1B、 SMD2020
	Working voltage、 Module Power	DC4.5V、 ≤20W
	Driving IC、 Driving way	ICN2153S、 1/26S
	HUB	HUB75
Cabinet Parameter	Material、 Cabinet Weight(kg/Cabinet)	Magnesium Alloy、 7.5kg/Cabinet
	Resolution rate、 size、 Module quantity	208*156Dots、 640*480*70mm、 2*3
	Density	105625 Dots/m ²
	White balance 、 Color temperature	300~600 CD/m ² 、 6000K-8000K
	view angel、 Non-Flatness、 Module interval	H/V: 120° /120° 、 <0.2mm、 <0.2mm
	Maximal power/m ² 、 Average power/m ²	≤450W/m ² 、 ≤150W/m ²
	Frame frequency、 Refresh frequency、 Gray grade	60Hz、 3840-7680Hz、 ≥13bit
	Control system、 System supports	Novastar/Colorlight, Windows
	Working temperature、 Protection grade	-20~50℃、 Front/Back: IP40
*Reference information, different configurations, different parameters		

Package Parameters :

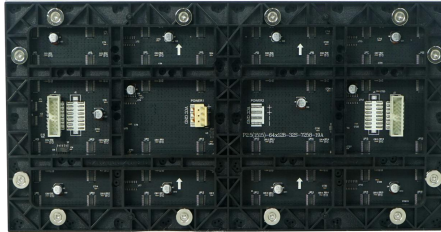
Gross Weight (kg)	49kg (Estimated data,6pcs /Case)
Outer Package Size	720*630*560mm (Estimated data,6pcs /Case)
Packing Material	Wooden bracket + paper packaging + pearl cotton



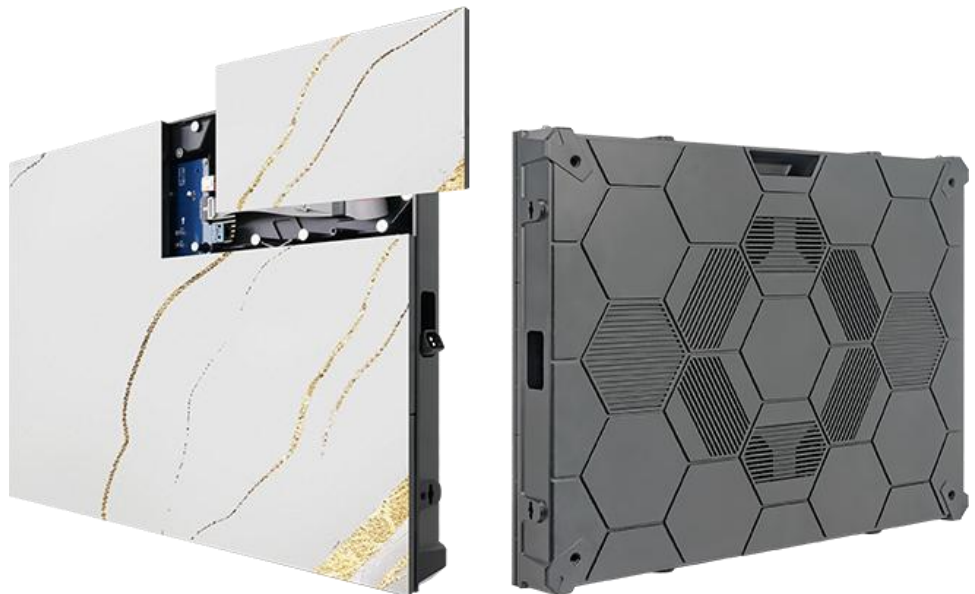
Assembly Sketch Map/Power Cable And Signal Cable Connection Sketch Map:



P4 indoor Die-Cast Magnesium Cabinet Texture Led Display Specification



Module



Cabinet

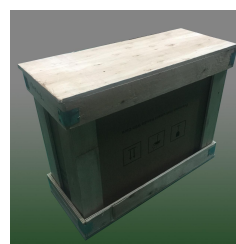
- ◆ **Premium Textured:** The module surface features a professional textured tech, delivering the unique and high-end aesthetic for differentiated visual appeal.
- ◆ **Art when off, display when on:** Blends seamlessly into the wall when powered off; transforms into a high-definition display when powered on—combining decoration and display in one.
- ◆ **Good compatibility:** The cabinet can be quickly replaced with module of the pixel pitch from P1.25 to P4, and images can be upgraded to higher quality with lower cost.
- ◆ **Ultra-light and thin:** Magnesium alloy cabinet, light-weighted, thin, beautiful appearance;
- ◆ **Wall-mounted installation:** modules, power supplies, and system cards can be fully maintained from the front; space-saving, suitable for high-end commercial display occasions.
- ◆ **Suitable for creative restaurants, retail reception areas, home theaters, hotel lobbies, exhibition halls, etc.**

Technical Parameters :

	Item	Specification Parameter
Module Parameter	Pixel Pitch、Resolution rate、size	4mm、80*40、320*160*18mm
	Pixel color、 Pixel LED	1R1G1B、 SMD2020
	Working voltage、 Module Power	DC4.5V、 ≤20W
	Driving IC、 Driving way	ICN2153S、 1/20S
	HUB	HUB75
Cabinet Parameter	Material、 Cabinet Weight(kg/Cabinet)	Magnesium Alloy、 7.5kg/Cabinet
	Resolution rate、 size、 Module quantity	160*120Dots、 640*480*70mm、 2*3
	Density	62500Dots/m ²
	White balance 、 Color temperature	300~600 CD/m ² 、 6000K-8000K
	view angel、 Non-Flatness、 Module interval	H/V: 120° /120° 、 <0.2mm、 <0.2mm
	Maximal power/m ² 、 Average power/m ²	450W/m ² 、 150W/m ²
	Frame frequency、 Refresh frequency、 Gray grade	60Hz、 3840-7680Hz、 ≥13bit
	Control system、 System supports	Novastar/Colorlight, Windows
	Working temperature、 Protection grade	-20~50℃、 Front/Back: IP40
*Reference information, different configurations, different parameters		

Package Parameters :

Gross Weight (kg)	49kg (Estimated data,6pcs /Case)
Outer Package Size	720*630*560mm (Estimated data,6pcs /Case)
Packing Material	Wooden bracket + paper packaging + pearl cotton



Assembly Sketch Map/Power Cable And Signal Cable Connection Sketch Map:

