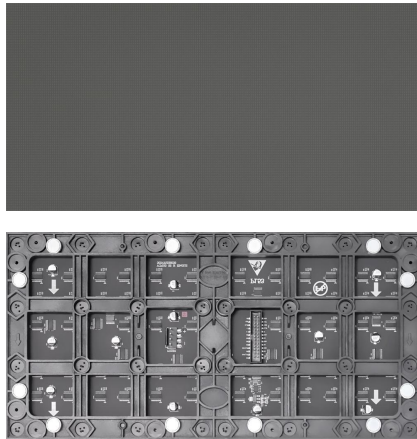


## P1.53 indoor Die-Cast Magnesium Cabinet Full Color Led Display Specification



**Module**

**Cabinet**



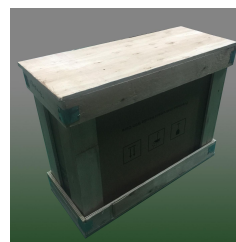
- ◆ High Reliability: COB LED displays have shown superiority in waterproofing, moisture-proof, and easy cleaning.
- ◆ Durable to Collision: COB surface hardness up to 4H, it can significantly reduce the issue of dead lights caused by collisions during transportation and installation.
- ◆ Good Compatibility: The cabinet can be quickly replaced with module of the pixel pitch from P1.25 to P4, and images can be upgraded to higher quality with lower cost;
- ◆ Ultra-light and thin: Magnesium alloy cabinet, light-weighted, thin, beautiful appearance;
- ◆ Wall-mounted Installation: Modules, power supplies, and system cards can be fully front maintenance; space-saving, suitable for high-end commercial display occasions;
- ◆ Ratio: Can be assembled to 4:3, 16:9 large screens; the same video source ratio as LCD, and can directly replace the original LCD.
- ◆ Widely used in auditorium stage, conference room, banquet hall, exhibition studio, traffic command, security monitoring and other occasions;

### Technical Parameters :

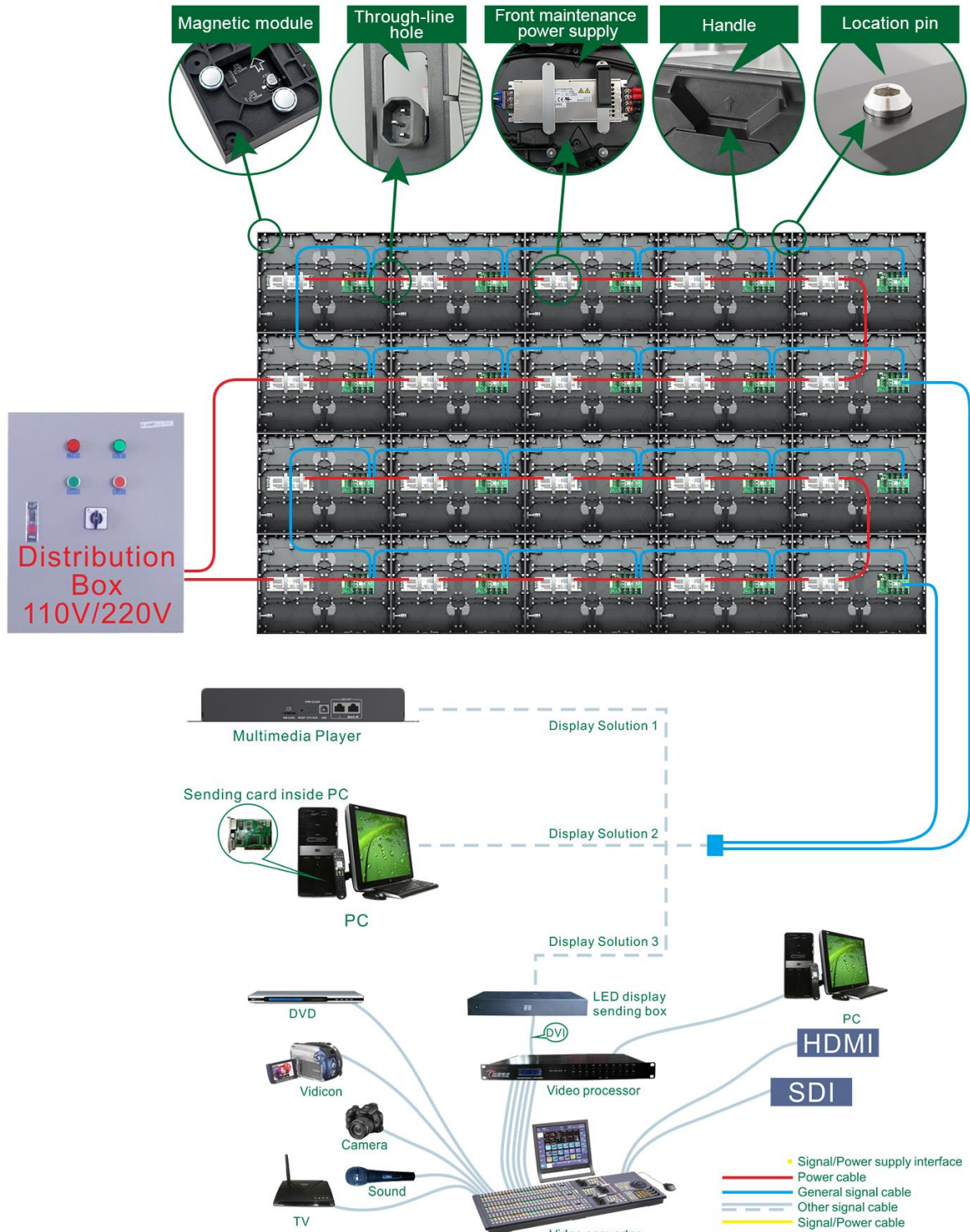
	Item	Specification Parameter
Module Parameter	Pixel Pitch、Resolution rate、size	1.53mm、208*104、320*160*15mm
	Pixel color、 Pixel LED	1R1G1B、COB
	Working voltage、 Module Power	DC4.5V、 ≤16W
	Driving IC、 Driving way	ICN1065AP、 1/52S
	HUB	HUB320
	Cabinet Parameter	Material、 Cabinet Weight(kg/Cabinet)
Resolution rate、 size、 Module quantity		416*312Dots、 640*480*70mm、 2*3
Density		422753 Dots/m <sup>2</sup>
White balance 、 Color temperature		600 CD/m <sup>2</sup> 、 9300K
view angel、 Non-Flatness、 Module interval		H/V: 160° /160° 、 <0.2mm、 <0.2mm
Maximal power/m <sup>2</sup> 、 Average power/m <sup>2</sup>		370W/m <sup>2</sup> 、 120W/m <sup>2</sup>
Frame frequency、 Refresh frequency、 Gray grade		60Hz、 3840Hz、 13bit
Control system、 System supports		Novastar, Windows
Working temperature、 Protection grade		-20~50°C、 Front/Back: IP54/IP40
*Reference information, different configurations, different parameters		

### Package Parameters :

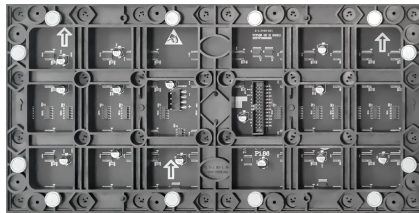
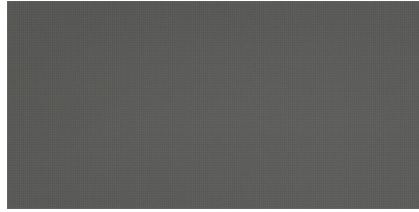
Gross Weight (kg)	49kg (Estimated data,6pcs /Case)
Outer Package Size	720*630*560mm (Estimated data,6pcs /Case)
Packing Material	Wooden bracket + paper packaging + pearl cotton



**Assembly Sketch Map/Power Cable And Signal Cable Connection Sketch Map:**



## P1.86 indoor Die-Cast Magnesium Cabinet Full Color Led Display Specification



**Module**

**Cabinet**



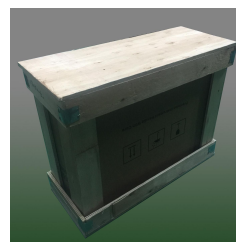
- ◆ High Reliability: COB LED displays have shown superiority in waterproofing, moisture-proof, and easy cleaning.
- ◆ Durable to Collision: COB surface hardness up to 4H, it can significantly reduce the issue of dead lights caused by collisions during transportation and installation.
- ◆ Good Compatibility: The cabinet can be quickly replaced with module of the pixel pitch from P1.25 to P4, and images can be upgraded to higher quality with lower cost;
- ◆ Ultra-light and thin: Magnesium alloy cabinet, light-weighted, thin, beautiful appearance;
- ◆ Wall-mounted Installation: Modules, power supplies, and system cards can be fully front maintenance; space-saving, suitable for high-end commercial display occasions;
- ◆ Ratio: Can be assembled to 4:3, 16:9 large screens; the same video source ratio as LCD, and can directly replace the original LCD.
- ◆ Widely used in auditorium stage, conference room, banquet hall, exhibition studio, traffic command, security monitoring and other occasions;

### Technical Parameters :

	Item	Specification Parameter
Module Parameter	Pixel Pitch、Resolution rate、size	1.86mm、172*86、320*160*15mm
	Pixel color、 Pixel LED	1R1G1B、COB
	Working voltage、 Module Power	DC4.5V、 ≤16W
	Driving IC、 Driving way	ICN1065、 1/43S
	HUB	HUB75
Cabinet Parameter	Material、 Cabinet Weight(kg/Cabinet)	Magnesium Alloy、 7.5kg/Cabinet
	Resolution rate、 size、 Module quantity	344*258Dots、 640*480*70mm、 2*3
	Density	288906 Dots/m <sup>2</sup>
	White balance 、 Color temperature	600 CD/m <sup>2</sup> 、 9300K
	view angel、 Non-Flatness、 Module interval	H/V: 160° /160° 、 <0.2mm、 <0.2mm
	Maximal power/m <sup>2</sup> 、 Average power/m <sup>2</sup>	370W/m <sup>2</sup> 、 ≤120W/m <sup>2</sup>
	Frame frequency、 Refresh frequency、 Gray grade	60Hz、 3840Hz、 13bit
	Control system、 System supports	Novastar, Windows
	Working temperature、 Protection grade	-20~50°C、 Front/Back: IP54/IP40
*Reference information, different configurations, different parameters		

### Package Parameters :

Gross Weight (kg)	49kg (Estimated data,6pcs /Case)
Outer Package Size	720*630*560mm (Estimated data,6pcs /Case)
Packing Material	Wooden bracket + paper packaging + pearl cotton



**Assembly Sketch Map/Power Cable And Signal Cable Connection Sketch Map:**

