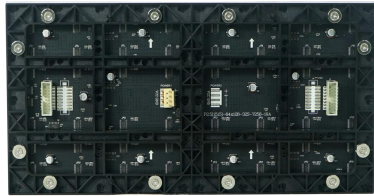
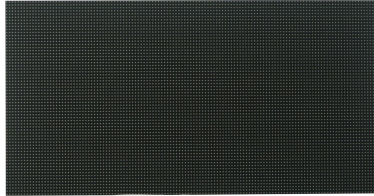


## P1.25 indoor Die-Cast Magnesium Cabinet Full Color Led Display Specification



**Module**

**Cabinet**



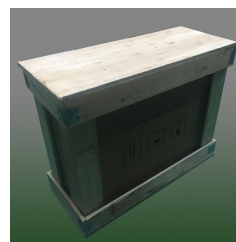
- ◆ Ready stock: Ready stock in European and American warehouses, face to face payment and fetching is available.
- ◆ Good compatibility: The cabinet can be quickly replaced with module of the pixel pitch from P1.25 to P4, and images can be upgraded to higher quality with lower cost.
- ◆ Ultra-light and thin: Magnesium alloy cabinet, light-weighted, thin, beautiful appearance;
- ◆ Wall-mounted installation: modules, power supplies, and system cards can be fully maintained from the front; space-saving, suitable for high-end commercial display occasions.
- ◆ Ratio: Can be assembled to 4:3, 16:9 large screens; the same video source ratio as LCD, and can directly replace the original LCD. Widely used in auditorium stage, conference room, banquet hall, exhibition studio, traffic command, security monitoring and other occasions.

### Technical Parameters :

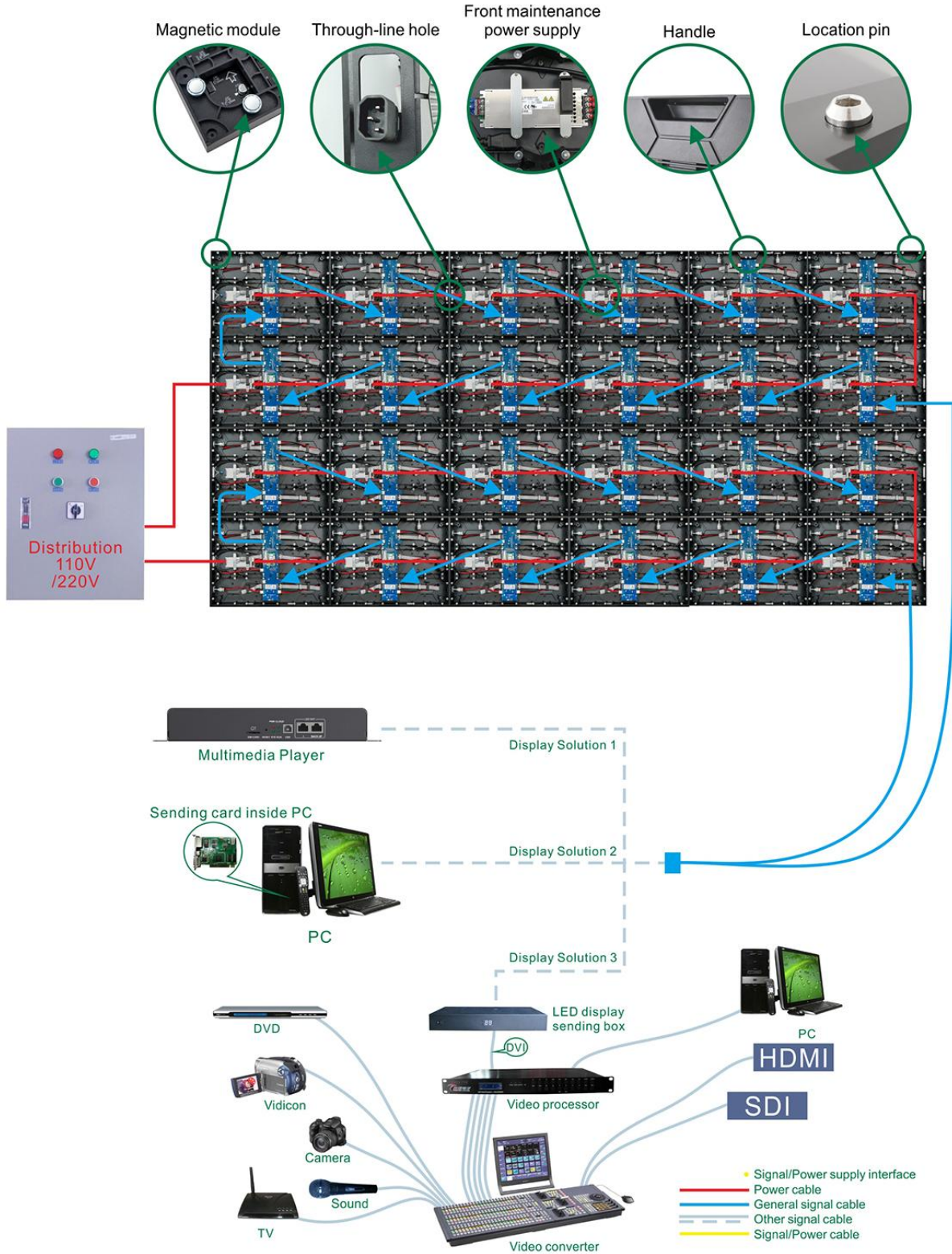
|   | Item  | Specification Parameter                     |
|---|---|---|
| Module Parameter  | Pixel Pitch、Resolution rate、size                            | 1.25mm、256*128、320*160*15mm                 |
|   | Pixel color、 Pixel LED                                      | 1R1G1B、 SMD1010                             |
|   | Working voltage、 Module Power                               | DC4.5V、 ≤20W                                |
|   | Driving IC、 Driving way                                     | 1065S、 1/64S                                |
|   | HUB   | HUB320                                      |
| Cabinet Parameter   | Material、 Cabinet Weight(kg/Cabinet)                        | Magnesium Alloy、 7.5kg/Cabinet              |
|   | Resolution rate、 size、 Module quantity                      | 512*384 Dots、 640*480*70mm、 2*3             |
|   | Density   | 640000 Dots/m <sup>2</sup>                  |
|   | White balance 、 Color temperature                           | 600 CD/m <sup>2</sup> 、 6000K-8000K         |
|   | view angel、 Non-Flatness、 Module interval                   | H/V: 120° /120° 、 <0.2mm、 <0.2mm            |
|   | Maximal power/m <sup>2</sup> 、 Average power/m <sup>2</sup> | ≤450W/m <sup>2</sup> 、 ≤150W/m <sup>2</sup> |
|   | Frame frequency、 Refresh frequency、 Gray grade              | 60Hz、 3840Hz、 ≥13bit                        |
|   | Control system、 System supports                             | Novastar/Colorlight, Windows                |
|   | Working temperature、 Protection grade                       | -20~50°C、 Front/Back: IP40                  |
| <b>*Reference information, different configurations, different parameters</b> |   |   |

### Package Parameters :

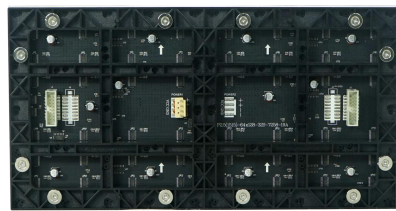
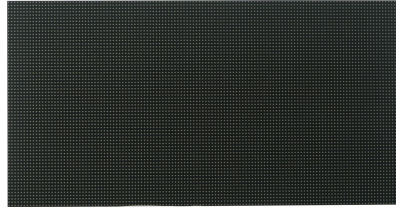
|                      |   |
|----------------------|---|
| Gross Weight<br>(kg) | 49kg<br>(Estimated data,6pcs /Case)             |
| Outer Package Size   | 720*630*560mm<br>(Estimated data,6pcs /Case)    |
| Packing Material     | Wooden bracket + paper packaging + pearl cotton |



**Assembly Sketch Map/Power Cable And Signal Cable Connection Sketch Map:**



## P1.53 indoor Die-Cast Magnesium Cabinet Full Color Led Display Specification



**Module**

**Cabinet**



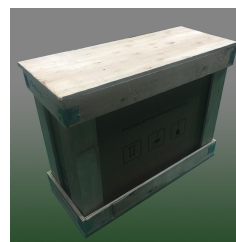
- ◆ Ready stock: Ready stock in European and American warehouses, face to face payment and fetching is available.
- ◆ Good compatibility: The cabinet can be quickly replaced with module of the pixel pitch from P1.25 to P4, and images can be upgraded to higher quality with lower cost.
- ◆ Ultra-light and thin: Magnesium alloy cabinet, light-weighted, thin, beautiful appearance;
- ◆ Wall-mounted installation: modules, power supplies, and system cards can be fully maintained from the front; space-saving, suitable for high-end commercial display occasions.
- ◆ Ratio: Can be assembled to 4:3, 16:9 large screens; the same video source ratio as LCD, and can directly replace the original LCD. Widely used in auditorium stage, conference room, banquet hall, exhibition studio, traffic command, security monitoring and other occasions.

### Technical Parameters :

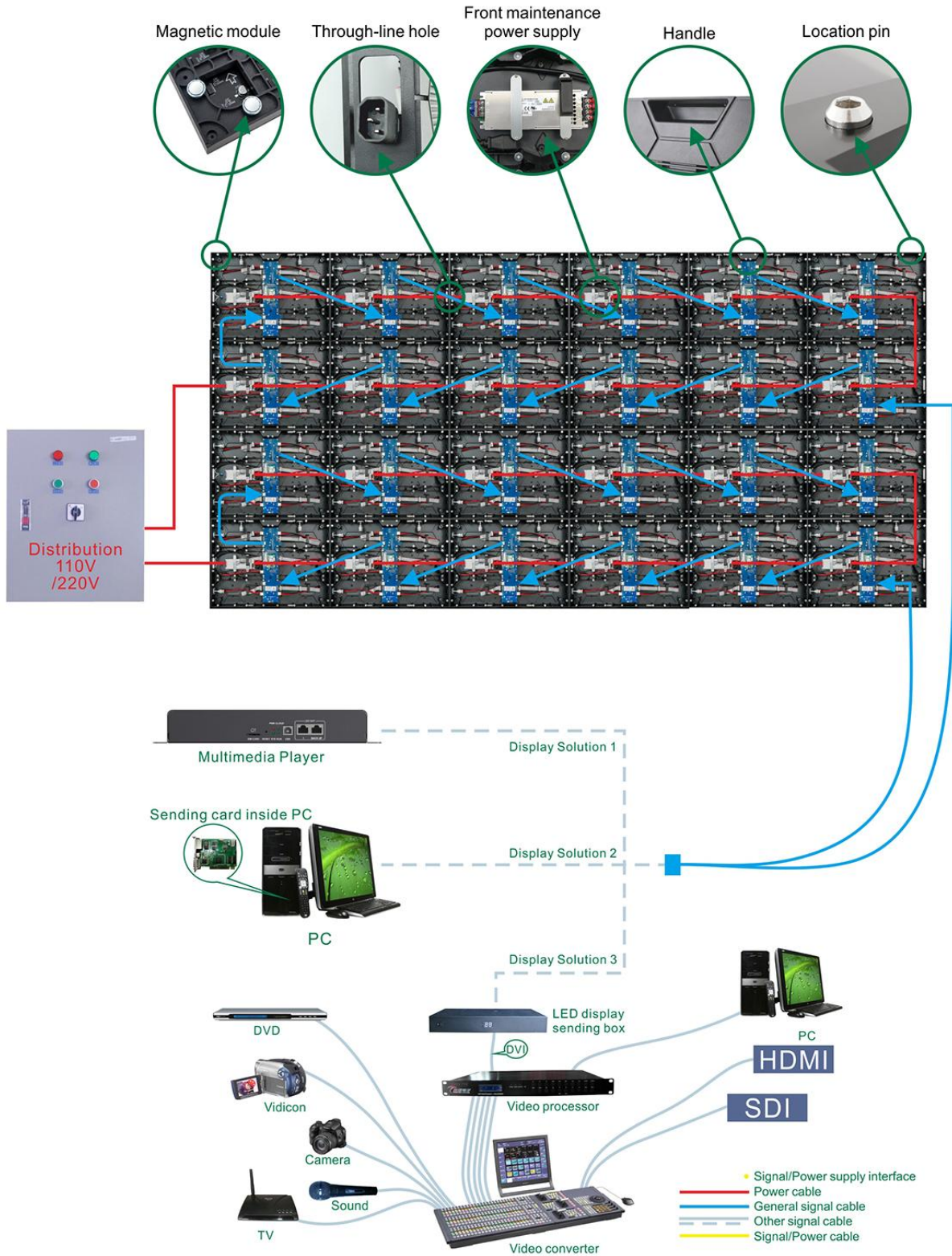
|   | Item                             | Specification Parameter                     |
|---|----------------------------------|---|
| Module Parameter  | Pixel Pitch、Resolution rate、size | 1.53mm、208*104、320*160*15mm                 |
|   | Pixel color、 Pixel LED           | 1R1G1B、 SMD1212                             |
|   | Working voltage、 Module Power    | DC4.5V、 ≤27W                                |
|   | Driving IC、 Driving way          | 1065S、 1/52                                 |
|   | HUB                              | HUB320                                      |
|   | Cabinet Parameter                | Material、 Cabinet Weight(kg/Cabinet)        |
| Resolution rate、 size、 Module quantity  |                                  | 416*312Dots、 640*480*70mm、 2*3              |
| Density   |                                  | 422500 Dots/m <sup>2</sup>                  |
| White balance 、 Color temperature   |                                  | 600 CD/m <sup>2</sup> 、 6000K-8000K         |
| view angel、 Non-Flatness、 Module interval                                     |                                  | H/V: 120° /120° 、 <0.2mm、 <0.2mm            |
| Maximal power/m <sup>2</sup> 、 Average power/m <sup>2</sup>                   |                                  | ≤550W/m <sup>2</sup> 、 ≤180W/m <sup>2</sup> |
| Frame frequency、 Refresh frequency、 Gray grade                                |                                  | 60Hz、 3840Hz、 ≥13bit                        |
| Control system、 System supports   |                                  | Novastar/Colorlight, Windows                |
| Working temperature、 Protection grade   |                                  | -20~50℃、 Front/Back: IP40                   |
| <b>*Reference information, different configurations, different parameters</b> |                                  |   |

### Package Parameters :

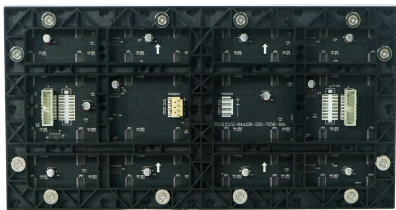
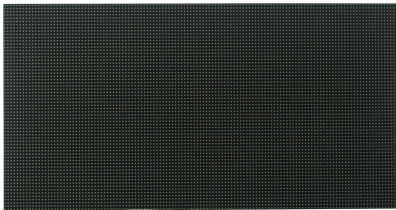
|                      |   |
|----------------------|---|
| Gross Weight<br>(kg) | 49kg<br>(Estimated data,6pcs /Case)             |
| Outer Package Size   | 720*630*560mm<br>(Estimated data,6pcs /Case)    |
| Packing Material     | Wooden bracket + paper packaging + pearl cotton |



**Assembly Sketch Map/Power Cable And Signal Cable Connection Sketch Map:**



## P1.86 indoor Die-Cast Magnesium Cabinet Full Color Led Display Specification



**Module**

**Cabinet**



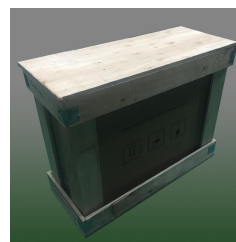
- ◆ Ready stock: Ready stock in European and American warehouses, face to face payment and fetching is available.
- ◆ Good compatibility: The cabinet can be quickly replaced with module of the pixel pitch from P1.25 to P4, and images can be upgraded to higher quality with lower cost.
- ◆ Ultra-light and thin: Magnesium alloy cabinet, light-weighted, thin, beautiful appearance;
- ◆ Wall-mounted installation: modules, power supplies, and system cards can be fully maintained from the front; space-saving, suitable for high-end commercial display occasions.
- ◆ Ratio: Can be assembled to 4:3, 16:9 large screens; the same video source ratio as LCD, and can directly replace the original LCD. Widely used in auditorium stage, conference room, banquet hall, exhibition studio, traffic command, security monitoring and other occasions.

### Technical Parameters :

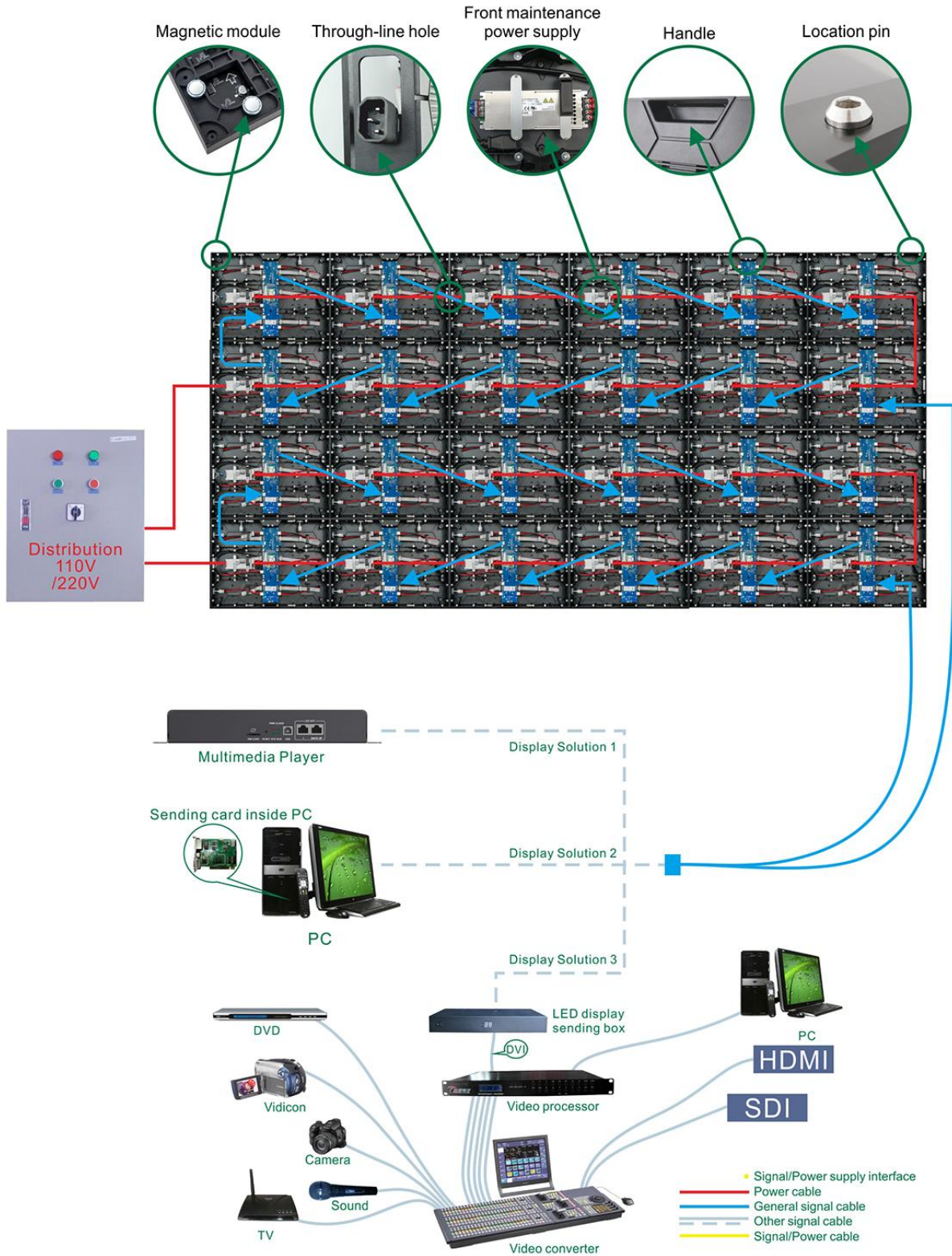
|  | Item                             | Specification Parameter                     |
|--|----------------------------------|---|
| Module Parameter   | Pixel Pitch、Resolution rate、size | 1.86mm、172*86、320*160*15mm                  |
|  | Pixel color、 Pixel LED           | 1R1G1B、 SMD1515                             |
|  | Working voltage、 Module Power    | DC4.5V、 ≤20W                                |
|  | Driving IC、 Driving way          | 1065S、 1/43S                                |
|  | HUB                              | HUB75                                       |
|  | Cabinet Parameter                | Material、 Cabinet Weight(kg/Cabinet)        |
| Resolution rate、 size、 Module quantity                                 |                                  | 344*258Dots、 640*480*70mm、 2*3              |
| Density  |                                  | 288906 Dots/m <sup>2</sup>                  |
| White balance 、 Color temperature                                      |                                  | 600 CD/m <sup>2</sup> 、 6000K-8000K         |
| view angel、 Non-Flatness、 Module interval                              |                                  | H/V: 120° /120° 、 <0.2mm、 <0.2mm            |
| Maximal power/m <sup>2</sup> 、 Average power/m <sup>2</sup>            |                                  | ≤450W/m <sup>2</sup> 、 ≤150W/m <sup>2</sup> |
| Frame frequency、 Refresh frequency、 Gray grade                         |                                  | 60Hz、 3840-7680Hz、 ≥13bit                   |
| Control system、 System supports  |                                  | Novastar/Colorlight, Windows                |
| Working temperature、 Protection grade                                  |                                  | -20~50℃、 Front/Back: IP40                   |
| *Reference information, different configurations, different parameters |                                  |   |

### Package Parameters :

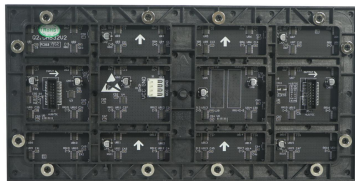
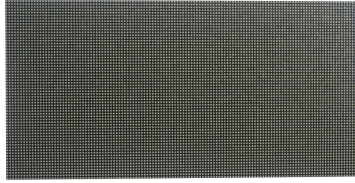
|                      |   |
|----------------------|---|
| Gross Weight<br>(kg) | 49kg<br>(Estimated data,6pcs /Case)             |
| Outer Package Size   | 720*630*560mm<br>(Estimated data,6pcs /Case)    |
| Packing Material     | Wooden bracket + paper packaging + pearl cotton |



**Assembly Sketch Map/Power Cable And Signal Cable Connection Sketch Map:**



## P2.5 indoor Die-Cast Magnesium Cabinet Full Color Led Display Specification



**Module**

**Cabinet**



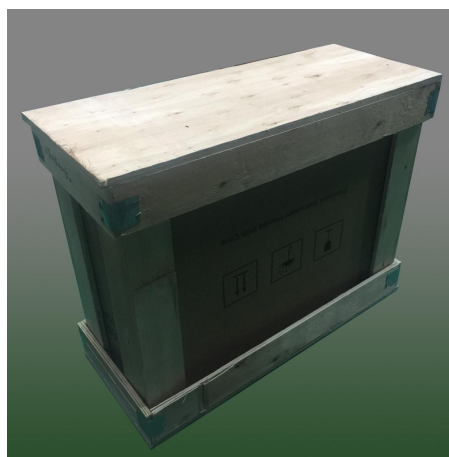
- ◆ Ready stock: Ready stock in European and American warehouses, face to face payment and fetching is available.
- ◆ Good compatibility: The cabinet can be quickly replaced with module of the pixel pitch from P1.25 to P4, and images can be upgraded to higher quality with lower cost.
- ◆ Ultra-light and thin: Magnesium alloy cabinet, light-weighted, thin, beautiful appearance;
- ◆ Wall-mounted installation: modules, power supplies, and system cards can be fully maintained from the front; space-saving, suitable for high-end commercial display occasions.
- ◆ Ratio: Can be assembled to 4:3, 16:9 large screens; the same video source ratio as LCD, and can directly replace the original LCD. Widely used in auditorium stage, conference room, banquet hall, exhibition studio, traffic command, security monitoring and other occasions.

### Technical Parameters :

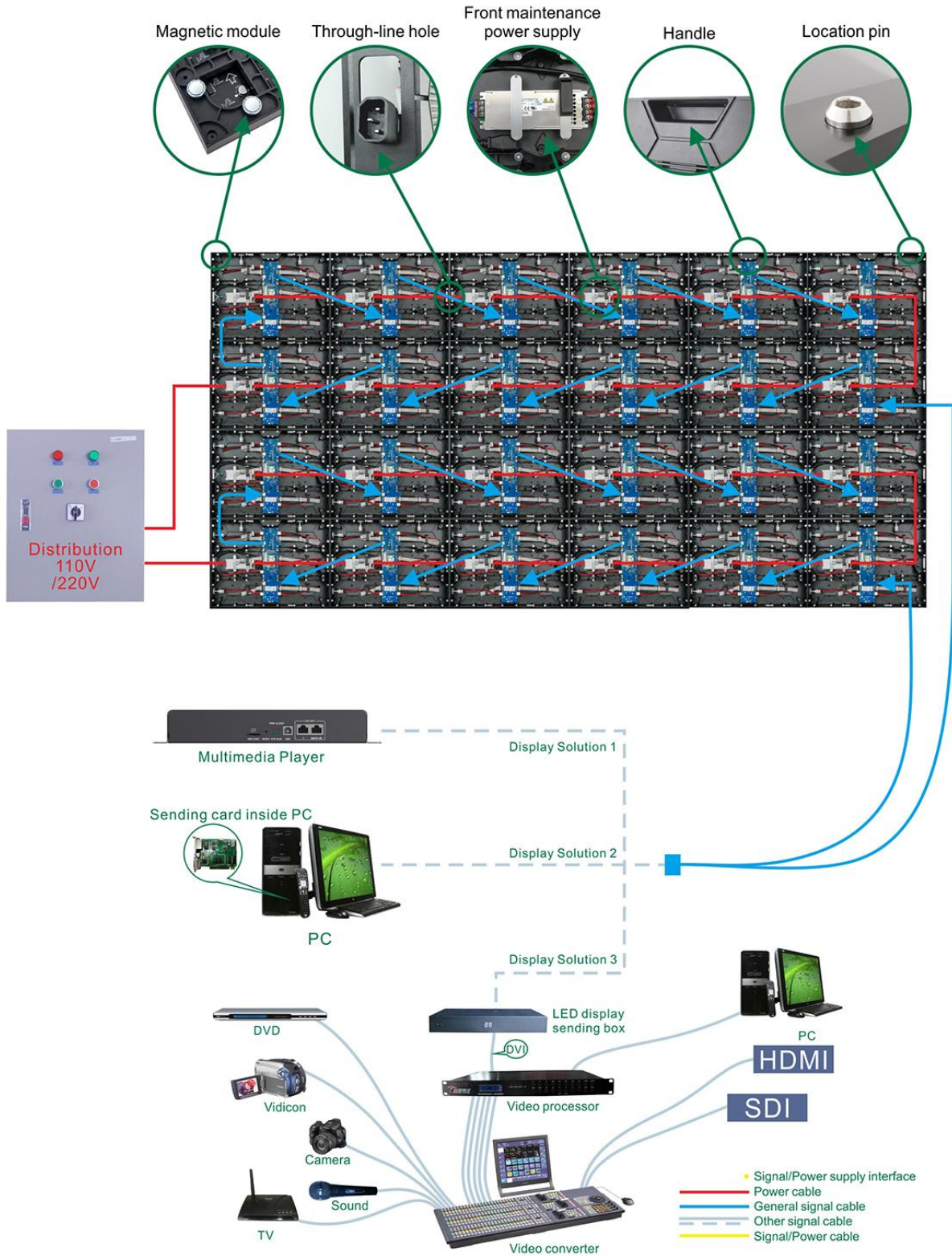
|   | Item  | Specification Parameter                     |
|---|---|---|
| Module Parameter  | Pixel Pitch、Resolution rate、size                            | 2.5mm、128*64、320*160*17mm                   |
|   | Pixel color、 Pixel LED                                      | 1R1G1B、 SMD2020                             |
|   | Working voltage、 Module Power                               | DC4.5V、 ≤20W                                |
|   | Driving IC、 Driving way                                     | ICN2153S、 1/32S                             |
|   | HUB   | HUB75                                       |
| Cabinet Parameter   | Material、 Cabinet Weight(kg/Cabinet)                        | Magnesium Alloy、 7.5kg/Cabinet              |
|   | Resolution rate、 size、 Module quantity                      | 256*192Dots、 640*480*70mm、 2*3              |
|   | Density   | 160000 Dots/m <sup>2</sup>                  |
|   | White balance 、 Color temperature                           | 800 CD/m <sup>2</sup> 、 6000K-8000K         |
|   | view angel、 Non-Flatness、 Module interval                   | H/V: 120° /120° 、 <0.2mm、 <0.2mm            |
|   | Maximal power/m <sup>2</sup> 、 Average power/m <sup>2</sup> | ≤450W/m <sup>2</sup> 、 ≤150W/m <sup>2</sup> |
|   | Frame frequency、 Refresh frequency、 Gray grade              | 60Hz、 3840-7680Hz、 ≥13bit                   |
|   | Control system、 System supports                             | Novastar/Colorlight; Windows                |
|   | Working temperature、 Protection grade                       | -20~50℃、 Front/Back: IP40                   |
| <b>*Reference information, different configurations, different parameters</b> |   |   |

### Package Parameters :

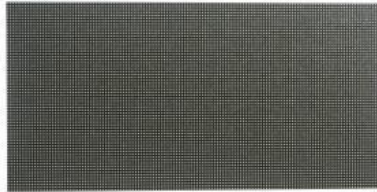
|                      |   |
|----------------------|---|
| Gross Weight<br>(kg) | 49kg<br>(Estimated data,6pcs /Case)             |
| Outer Package Size   | 720*630*560mm<br>(Estimated data,6pcs /Case)    |
| Packing Material     | Wooden bracket + paper packaging + pearl cotton |



**Assembly Sketch Map/Power Cable And Signal Cable Connection Sketch Map:**



## P3 indoor Die-Cast Magnesium Cabinet Full Color Led Display Specification



**Module**

**Cabinet**



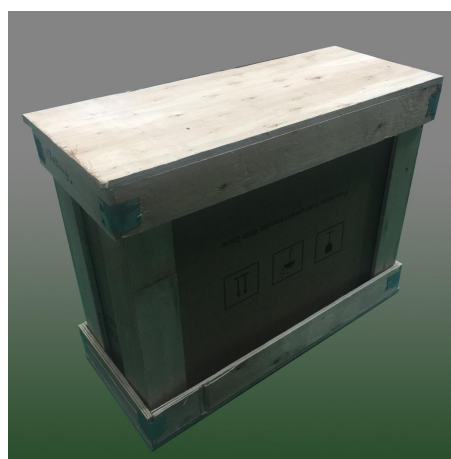
- ◆ Ready stock: Ready stock in European and American warehouses, face to face payment and fetching is available.
- ◆ Good compatibility: The cabinet can be quickly replaced with module of the pixel pitch from P1.25 to P4, and images can be upgraded to higher quality with lower cost.
- ◆ Ultra-light and thin: Magnesium alloy cabinet, light-weighted, thin, beautiful appearance;
- ◆ Wall-mounted installation: modules, power supplies, and system cards can be fully maintained from the front; space-saving, suitable for high-end commercial display occasions.
- ◆ Ratio: Can be assembled to 4:3, 16:9 large screens; the same video source ratio as LCD, and can directly replace the original LCD. Widely used in auditorium stage, conference room, banquet hall, exhibition studio, traffic command, security monitoring and other occasions.

### Technical Parameters :

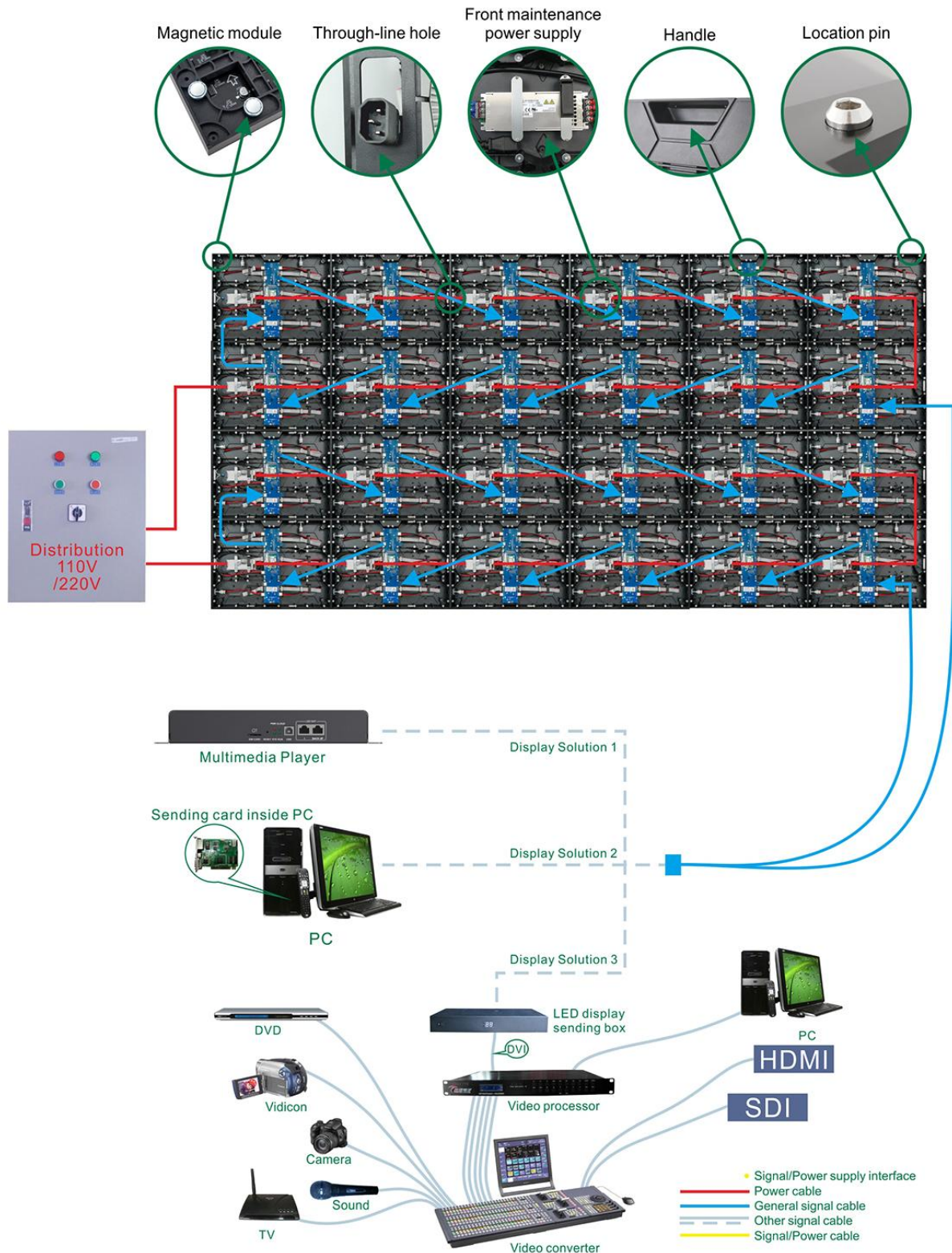
|   | Item                             | Specification Parameter                   |
|---|----------------------------------|---|
| Module Parameter  | Pixel Pitch、Resolution rate、size | 3mm、104*52、320*160*18mm                   |
|   | Pixel color、 Pixel LED           | 1R1G1B、 SMD2020                           |
|   | Working voltage、 Module Power    | DC4.5V、 ≤20W                              |
|   | Driving IC、 Driving way          | ICND2153S、 1/26                           |
|   | HUB                              | HUB75                                     |
|   | Cabinet Parameter                | Material、 Cabinet Weight(kg/Cabinet)      |
| Resolution rate、 size、 Module quantity  |                                  | 208*156Dots、 640*480*70mm、 2*3            |
| Density   |                                  | 105625 Dots/m <sup>2</sup>                |
| White balance 、 Color temperature   |                                  | 800CD/m <sup>2</sup> 、 6000K-8000K        |
| view angel、 Non-Flatness、 Module interval                                     |                                  | H/V: 120° /120° 、 <0.2mm、 <0.2mm          |
| Maximal power/m <sup>2</sup> 、 Average power/m <sup>2</sup>                   |                                  | 450W/m <sup>2</sup> 、 150W/m <sup>2</sup> |
| Frame frequency、 Refresh frequency、 Gray grade                                |                                  | 60Hz、 3840-7680Hz、 ≥13bit                 |
| Control system、 System supports   |                                  | Novastar/Colorlight; Windows              |
| Working temperature、 Protection grade   |                                  | -20~50℃、 Front/Back: IP40                 |
| <b>*Reference information, different configurations, different parameters</b> |                                  |   |

### Package Parameters :

|                      |   |
|----------------------|---|
| Gross Weight<br>(kg) | 49kg<br>(Estimated data,6pcs /Case)             |
| Outer Package Size   | 720*630*560mm<br>(Estimated data,6pcs /Case)    |
| Packing Material     | Wooden bracket + paper packaging + pearl cotton |



**Assembly Sketch Map/Power Cable And Signal Cable Connection Sketch Map:**



## P4 indoor Die-Cast Magnesium Cabinet Full Color Led Display Specification



**Module**

**Cabinet**



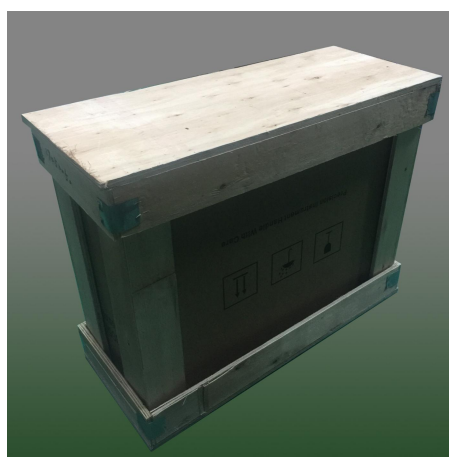
- ◆ Ready stock: Ready stock in European and American warehouses, face to face payment and fetching is available.
- ◆ Good compatibility: The cabinet can be quickly replaced with module of the pixel pitch from P1.25 to P4, and images can be upgraded to higher quality with lower cost.
- ◆ Ultra-light and thin: Magnesium alloy cabinet, light-weighted, thin, beautiful appearance;
- ◆ Wall-mounted installation: modules, power supplies, and system cards can be fully maintained from the front; space-saving, suitable for high-end commercial display occasions.
- ◆ Ratio: Can be assembled to 4:3, 16:9 large screens; the same video source ratio as LCD, and can directly replace the original LCD. Widely used in auditorium stage, conference room, banquet hall, exhibition studio, traffic command, security monitoring and other occasions.

### Technical Parameters :

|   | Item  | Specification Parameter                   |
|---|---|---|
| Module Parameter  | Pixel Pitch、Resolution rate、size                            | 4mm、80*40、320*160*18mm                    |
|   | Pixel color、 Pixel LED                                      | 1R1G1B、 SMD2020                           |
|   | Working voltage、 Module Power                               | DC4.5V、 ≤20W                              |
|   | Driving IC、 Driving way                                     | ICND2153S、 1/26S                          |
|   | HUB   | HUB75                                     |
| Cabinet Parameter   | Material、 Cabinet Weight(kg/Cabinet)                        | Magnesium Alloy、 7.5kg/Cabinet            |
|   | Resolution rate、 size、 Module quantity                      | 160*120Dots、 640*480*70mm、 2*3            |
|   | Density   | 62500Dots/m <sup>2</sup>                  |
|   | White balance 、 Color temperature                           | 800CD/m <sup>2</sup> 、 6000K-8000K        |
|   | view angel、 Non-Flatness、 Module interval                   | H/V: 120° /120° 、 <0.2mm、 <0.2mm          |
|   | Maximal power/m <sup>2</sup> 、 Average power/m <sup>2</sup> | 450W/m <sup>2</sup> 、 150W/m <sup>2</sup> |
|   | Frame frequency、 Refresh frequency、 Gray grade              | 60Hz、 3840-7680Hz、 ≥13bit                 |
|   | Control system、 System supports                             | Novastar/Colorlight; Windows              |
|   | Working temperature、 Protection grade                       | -20~50℃、 Front/Back: IP40                 |
| <b>*Reference information, different configurations, different parameters</b> |   |   |

### Package Parameters :

|                      |   |
|----------------------|---|
| Gross Weight<br>(kg) | 49kg<br>(Estimated data,6pcs /Case)             |
| Outer Package Size   | 720*630*560mm<br>(Estimated data,6pcs /Case)    |
| Packing Material     | Wooden bracket + paper packaging + pearl cotton |



**Assembly Sketch Map/Power Cable And Signal Cable Connection Sketch Map:**

