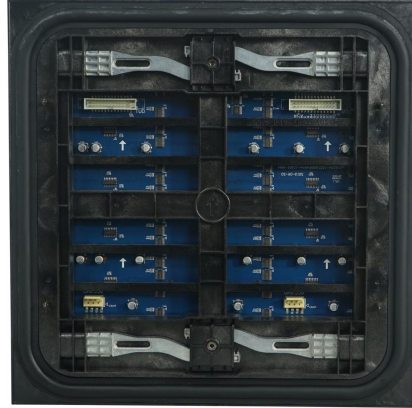
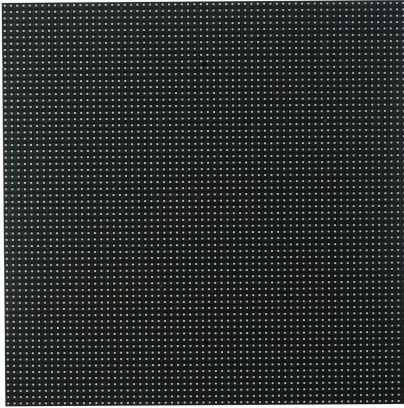


## Specification for P10(1280x960mm magnesium alloy die-casting cabinet) dual maintenance full color LED display



**Module**

**Cabinet**



### Features:

- A- Ultra-thin: 15kg/m<sup>2</sup> lighter than iron cabinet and 20% thinner; reducing transportation and steel structure costs.
- B- Multi-purpose: It can be used for advertising, rental and perimeter Led display and other large screens.
- C- Front maintenance design; equipped with front maintenance module, it can be installed against the wall to achieve fast assemble, disassemble and maintain from the front.
- D- Easy upgrade and replacement: the cabinet is adapted to P4~20mm modules, no need to change the cabinet for upgrade, saving manpower and cabinet costs;
- E- High brightness: brightness  $\geq 6000\text{CD/m}^2$ , the picture is still clear under strong light;
- F- High precision: Die-casting integrally formed cabinet, tolerance  $<0.1\text{mm}$ , high assembly precision and good flatness.
- G- Fast delivery: intelligent automatic standard production, a large number of stock in European and American warehouses, fast delivery;
- H- High cost performance: IP65 protection level; aluminum-magnesium alloy material with good price, wind, rain, salt spray and corrosion resistance.

### Technical Parameters:

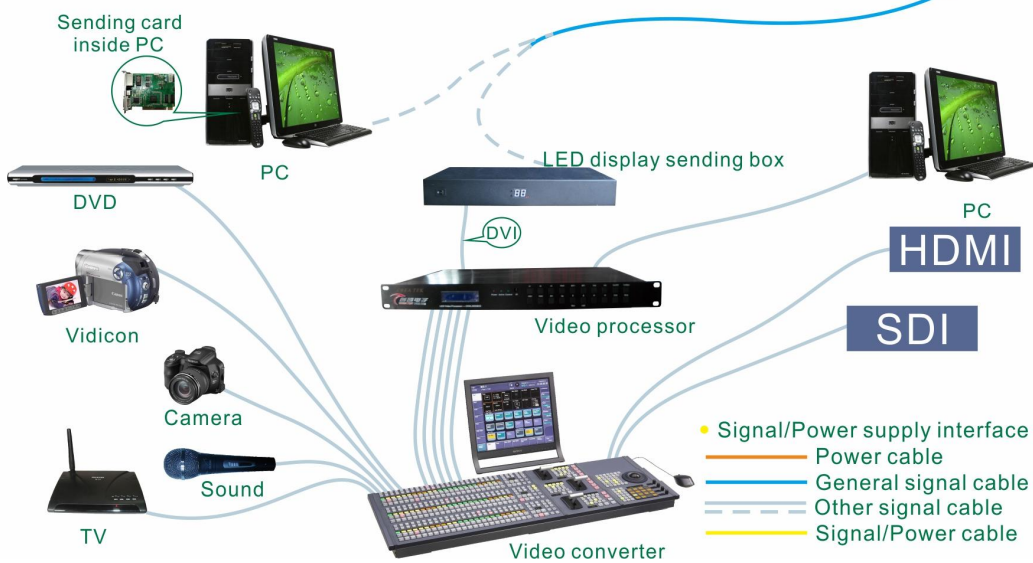
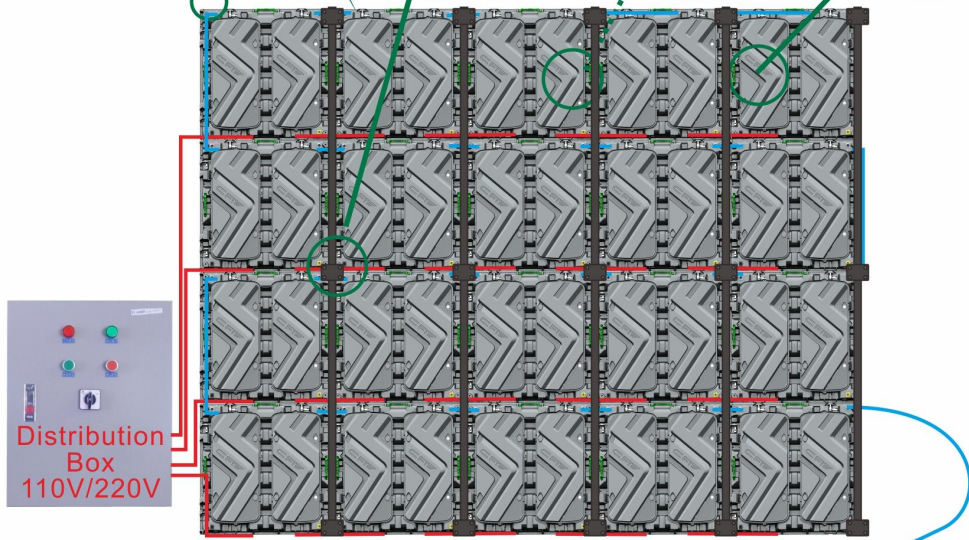
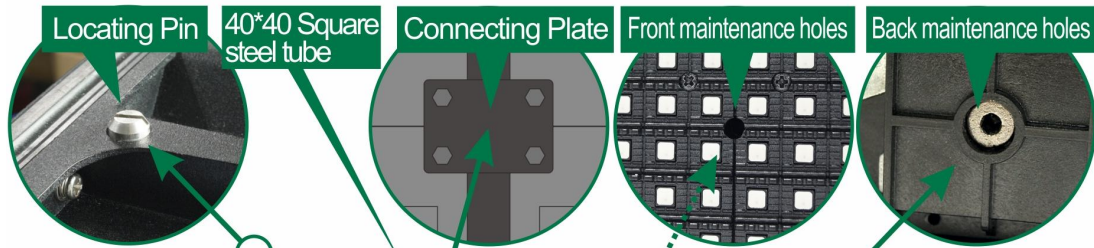
	Item	Specification Parameter
Module Parameter	Pixel Pitch、 Resolution rate、 size	10mm、 32*32 Dots、 320*320*30mm
	Pixel color、 Pixel LED	1R1G1B、 SMD3535
	Working voltage、 Module Power	DC4.6V、 60W
	Driving IC、 Driving way	MBI5124、 1/2
	HUB	QP-HUB75
	Cabinet Parameter	Material、 Cabinet Weight(kg/Cabinet)
Resolution rate、 size、 Module quantity		128*96、 1280*960*150mm、 4*3
Density		10000 Dots/m <sup>2</sup>
White balance 、 Color temperature		6000 CD/m <sup>2</sup> 、 6500K
view angel、 Non-Flatness、 Module interval		H/V:110°/110°、 <1mm、 <1mm
Maximal power/m <sup>2</sup> 、 Average power/m <sup>2</sup>		600W/m <sup>2</sup> 、 240W/m <sup>2</sup>
Frame frequency、 Refresh frequency、 Gray grade		60Hz、 1920Hz、 13bit
Control system、 System supports		CHIPSHOW、 Novastar、 Linsn、 XP、WIN 7
Working temperature、 Protection grade		-20℃~50℃、 Front/Back: IP65/IP54

### Package Parameters:

Gross Weight (kg)	4pcs /Case (Estimated data: 200kg)
Outer Package Size	4pcs /Case (Estimated data: 1350*660*1140mm)
Packing Material	Carton+Pearl cotton +wooden pallet

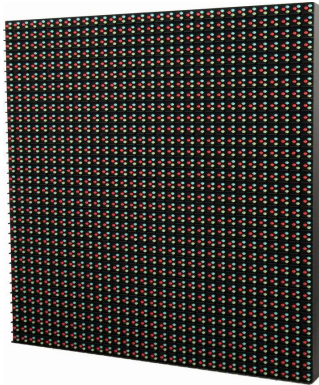


**Assembly Sketch Map/Power Cable And Signal Cable Connection Sketch Map:**



One power cable can power 8 cabinets

## Specification for P10(1280x960mm magnesium alloy die-casting cabinet) dual maintenance full color LED display



**Module**

**Cabinet**



### Features:

- I- Ultra-thin: 15kg/m<sup>2</sup> lighter than iron cabinet and 20% thinner; reducing transportation and steel structure costs.
- J- Multi-purpose: It can be used for advertising, rental and perimeter Led display and other large screens.
- K- Front maintenance design; equipped with front maintenance module, it can be installed against the wall to achieve fast assemble, disassemble and maintain from the front.
- L- Easy upgrade and replacement: the cabinet is adapted to P4~20mm modules, no need to change the cabinet for upgrade, saving manpower and cabinet costs;
- M- High brightness: brightness  $\geq 8500\text{CD/m}^2$ , the picture is still clear under strong light;
- N- High precision: Die-casting integrally formed cabinet, tolerance  $<0.1\text{mm}$ , high assembly precision and good flatness.
- O- Fast delivery: intelligent automatic standard production, a large number of stock in European and American warehouses, fast delivery;
- P- High cost performance: IP65 protection level; aluminum-magnesium alloy material with good price, wind, rain, salt spray and corrosion resistance.

**Technical Parameters:**

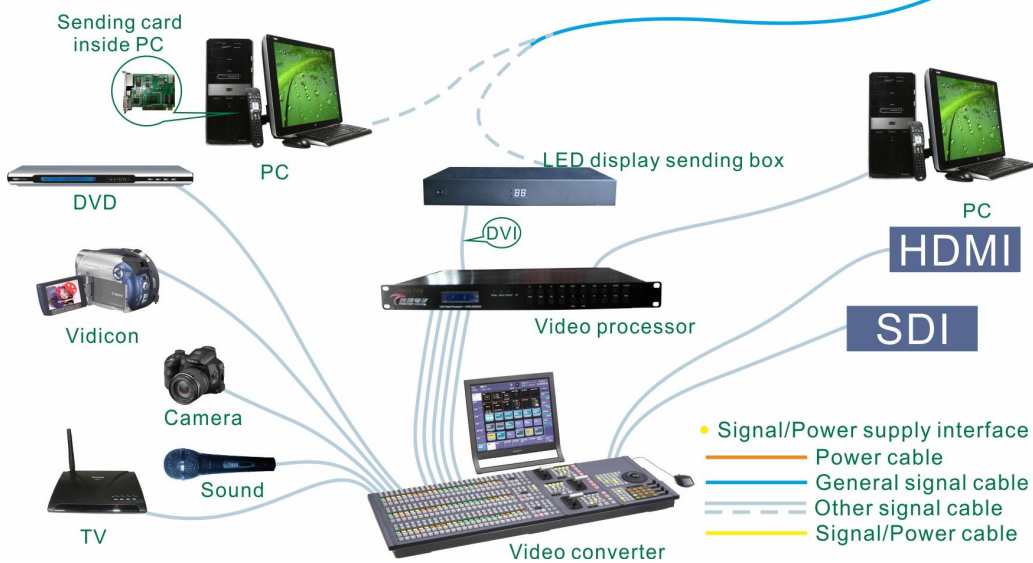
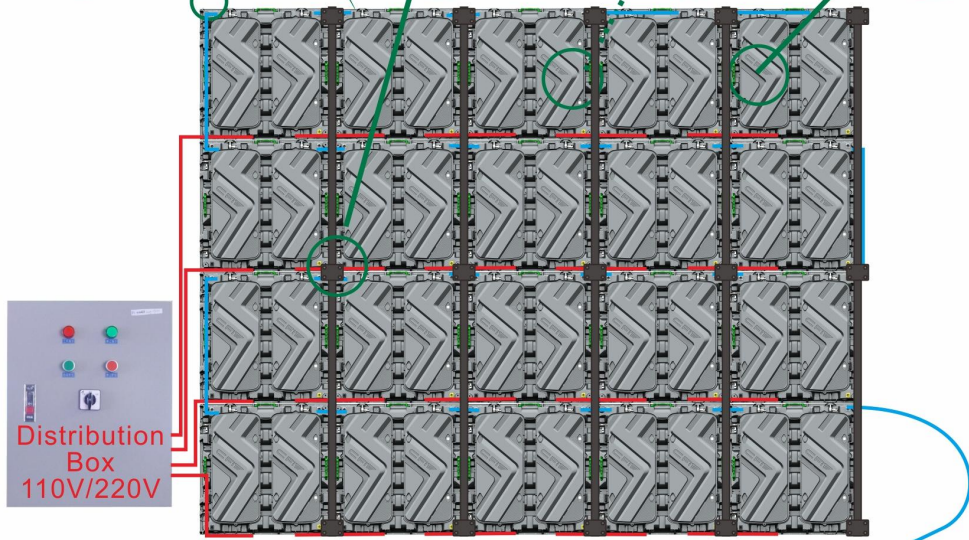
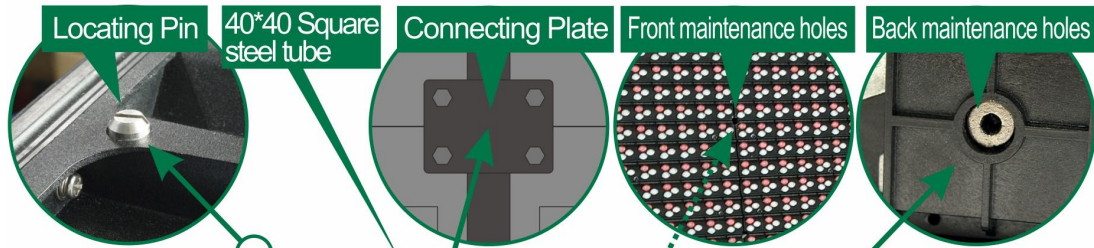
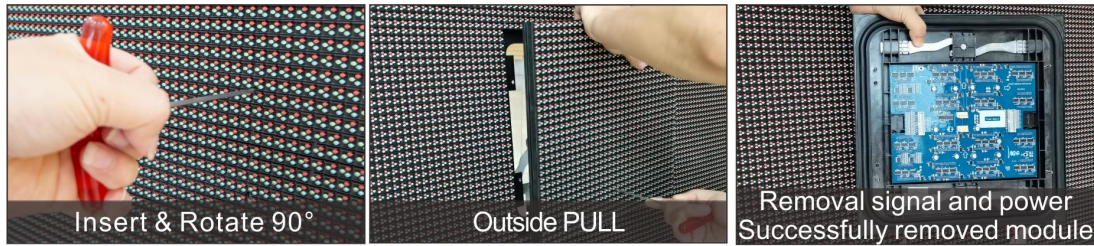
	Item	Specification Parameter
Module Parameter	Pixel Pitch、 Resolution rate、 size	10mm、 32*32 Dots、 320*320*30mm
	Pixel color、 Pixel LED	1R1G1B、 DIP346
	Working voltage、 Module Power	DC4.6V、 60W
	Driving IC、 Driving way	MBI5124、 1/4
	HUB	-HUB75
	Cabinet Parameter	Material、 Cabinet Weight(kg/Cabinet)
Resolution rate、 size、 Module quantity		128*96、 1280*960*150mm、 4*3
Density		10000 Dots/m <sup>2</sup>
White balance 、 Color temperature		8500 CD/m <sup>2</sup> 、 6500K-8000K
view angel、 Non-Flatness、 Module interval		H/V:110°/55°、 <0.5mm、 <0.5mm
Maximal power/m <sup>2</sup> 、 Average power/m <sup>2</sup>		600W/m <sup>2</sup> 、 240W/m <sup>2</sup>
Frame frequency、 Refresh frequency、 Gray grade		60Hz、 1920Hz、 14bit
Control system、 System supports		CHIPSHOW、 XP,WIN 7
Working temperature、 Protection grade		-20℃~50℃、 Front/Back: IP65/IP54

**Package Parameters:**

Gross Weight (kg)	4pcs /Case (Estimated data: 200kg)
Outer Package Size	4pcs /Case (Estimated data: 1350*690*1220mm)
Packing Material	Carton+Pearl cotton +wooden pallet

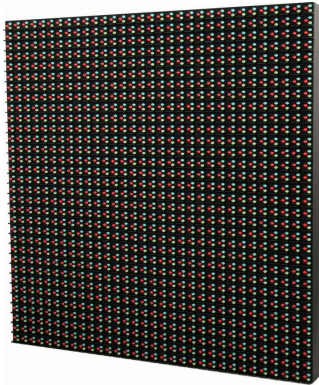


**Assembly Sketch Map/Power Cable And Signal Cable Connection Sketch Map:**



One power cable can power 8 cabinets

## Specification for P16(1280x960mm magnesium alloy die-casting cabinet) dual maintenance full color LED display



**Module**

**Cabinet**



### Features:

- Q- Ultra-thin: 15kg/m<sup>2</sup> lighter than iron cabinet and 20% thinner; reducing transportation and steel structure costs.
- R- Multi-purpose: It can be used for advertising, rental and perimeter Led display and other large screens.
- S- Front maintenance design; equipped with front maintenance module, it can be installed against the wall to achieve fast assemble, disassemble and maintain from the front.
- T- Easy upgrade and replacement: the cabinet is adapted to P4~20mm modules, no need to change the cabinet for upgrade, saving manpower and cabinet costs;
- U- High brightness: brightness  $\geq 8500\text{CD/m}^2$ , the picture is still clear under strong light;
- V- High precision: Die-casting integrally formed cabinet, tolerance  $<0.1\text{mm}$ , high assembly precision and good flatness.
- W- Fast delivery: intelligent automatic standard production, a large number of stock in European and American warehouses, fast delivery;
- X- High cost performance: IP65 protection level; aluminum-magnesium alloy material with good price, wind, rain, salt spray and corrosion resistance.

### Technical Parameters :

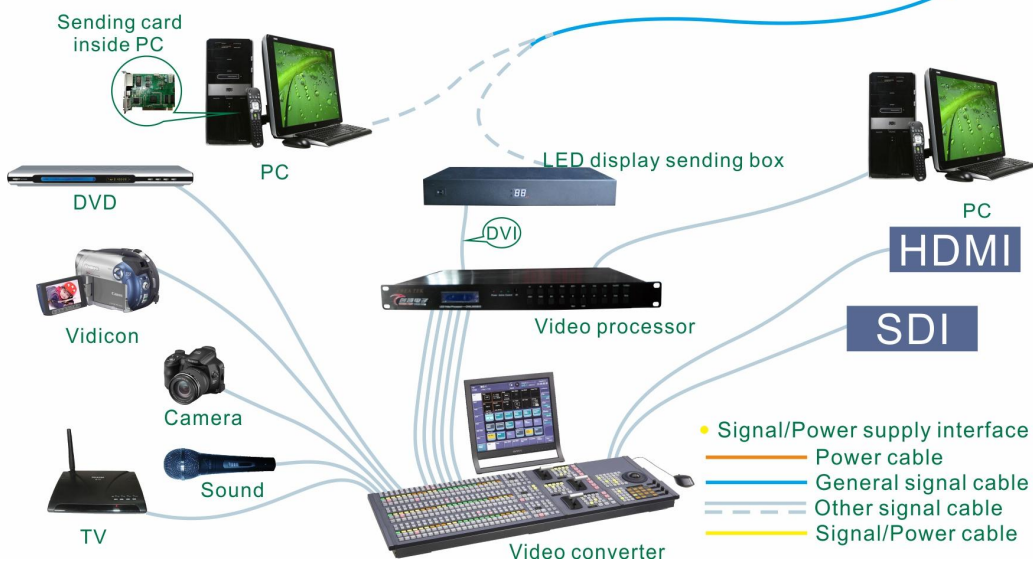
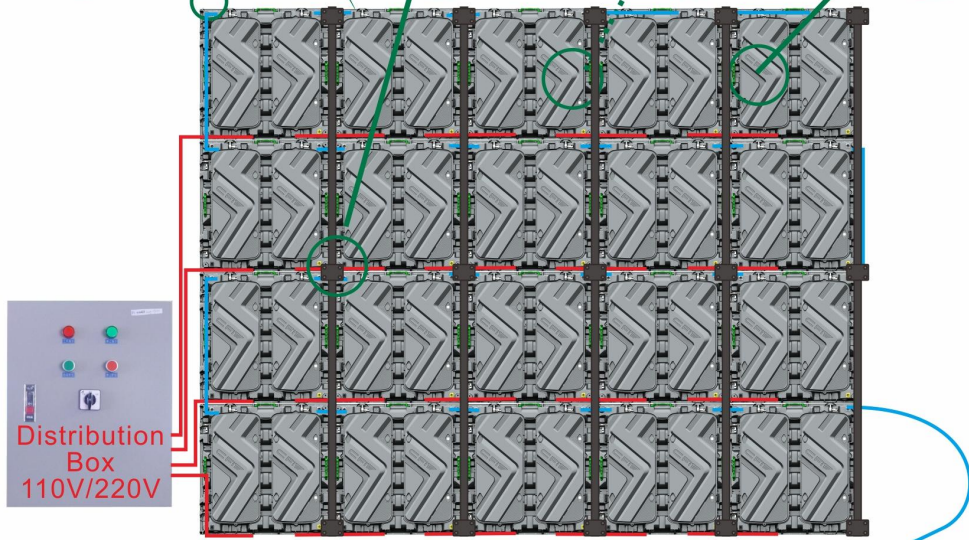
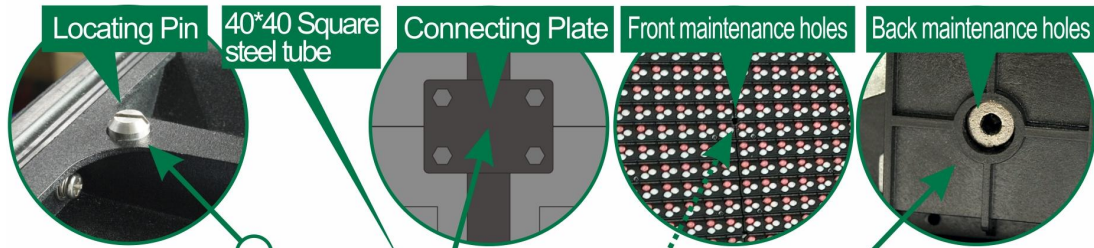
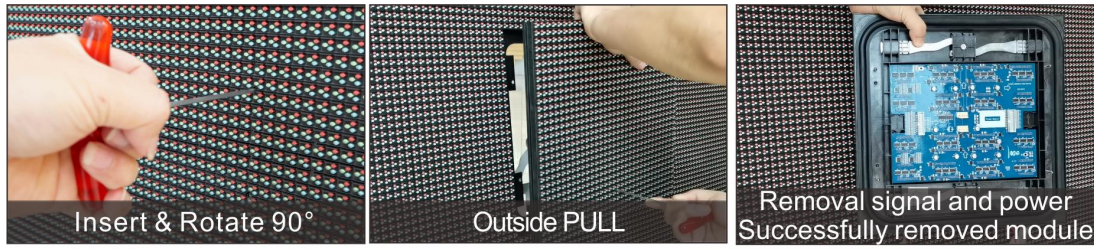
	Item	Specification Parameter
Module Parameter	Pixel Pitch、 Resolution rate、 size	16mm、 20*20 Dots、 320*320*30mm
	Pixel color、 Pixel LED	1R1G1B、 DIP346
	Working voltage、 Module Power	DC4.6V、 55W
	Driving IC、 Driving way	MBI5124、 static
	HUB	HUB16
	Cabinet Parameter	Material、 Cabinet Weight(kg/Cabinet)
Resolution rate、 size、 Module quantity		80*60、 1280*960*150mm、 4*3
Density		3906 Dots/m <sup>2</sup>
White balance 、 Color temperature		8500 CD/m <sup>2</sup> 、 6500K
view angel、 Non-Flatness、 Module interval		H/V:110°/55°、 <1mm、 <1mm
Maximal power/m <sup>2</sup> 、 Average power/m <sup>2</sup>		550W/m <sup>2</sup> 、 220W/m <sup>2</sup>
Frame frequency、 Refresh frequency、 Gray grade		60Hz、 1920Hz、 16bit
Control system、 System supports		CHIPSHOW、 XP,WIN 7
Working temperature、 Protection grade		-20℃~50℃、 Front/Back: IP65/IP54

### Package Parameters :

Gross Weight (kg)	4pcs /Case (Estimated data: 200kg)
Outer Package Size	4pcs /Case (Estimated data: 1350*690*1220mm)
Packing Material	Carton+Pearl cotton +wooden pallet



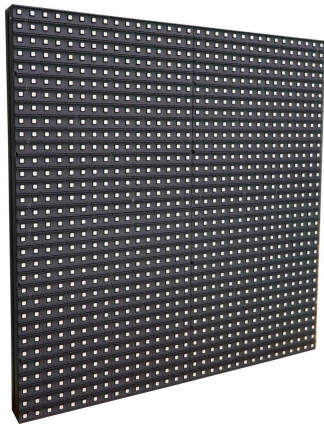
**Assembly Sketch Map/Power Cable And Signal Cable Connection Sketch Map:**



One power cable can power 8 cabinets

# P10 Outdoor Dual-maintenance Module Full Color Led Display Specification

V: 2022.03.29



**Module**

**Cabinet**



## Features:

- Y- Lighter and thinner:  $15\text{kg}/\text{m}^2$  lighter than conventional iron cabinet and 20% thinner than conventional cabinet; saving transportation space, light weight and low transportation cost, reducing the load-bearing requirements of buildings and frameworks.
- Z- Multi-functional: It can be used for fixed installation of advertising, if adding hanging beams, connectors, fast lock, it can be used as rentals; and if adding pillows and bracket, it can be used as stadium.
- AA- Optional front maintenance design: optional front maintenance and installation module, easy installation and maintenance on the wall.
- AB- Low-cost for upgrading: The cabinet can be adapted to outdoor P4~20mm pixel pitch modules, no need to change the cabinet to do the upgrade, saving labor cost and the easy for operation.
- AC- High brightness, the brightness can reach more than 6000nit, and the picture effect is still clear under strong outdoor light;
- AD- High precision: Cast aluminum integral molding process CNC machining, the shape tolerance is less than 0.1mm, with high assembly precision, and good flatness.
- AE- Negative pressure double cyclone cooling system: mute super strong circulation cooling without dead angle.
- AF- Fully automated standard manufacturing, a large number of stock in European and American warehouses, with fast delivery;
- AG- Cost-effective: IP65 protection grade; resistant to wind, rain, salt spray and corrosion with aluminum-magnesium alloy material.

### Technical Parameters :

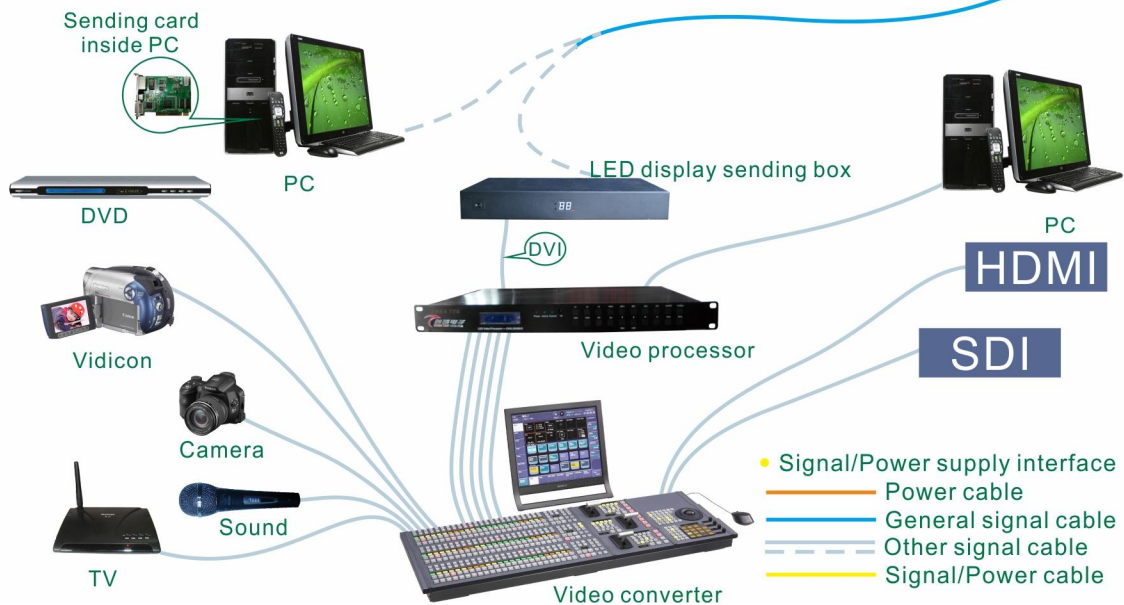
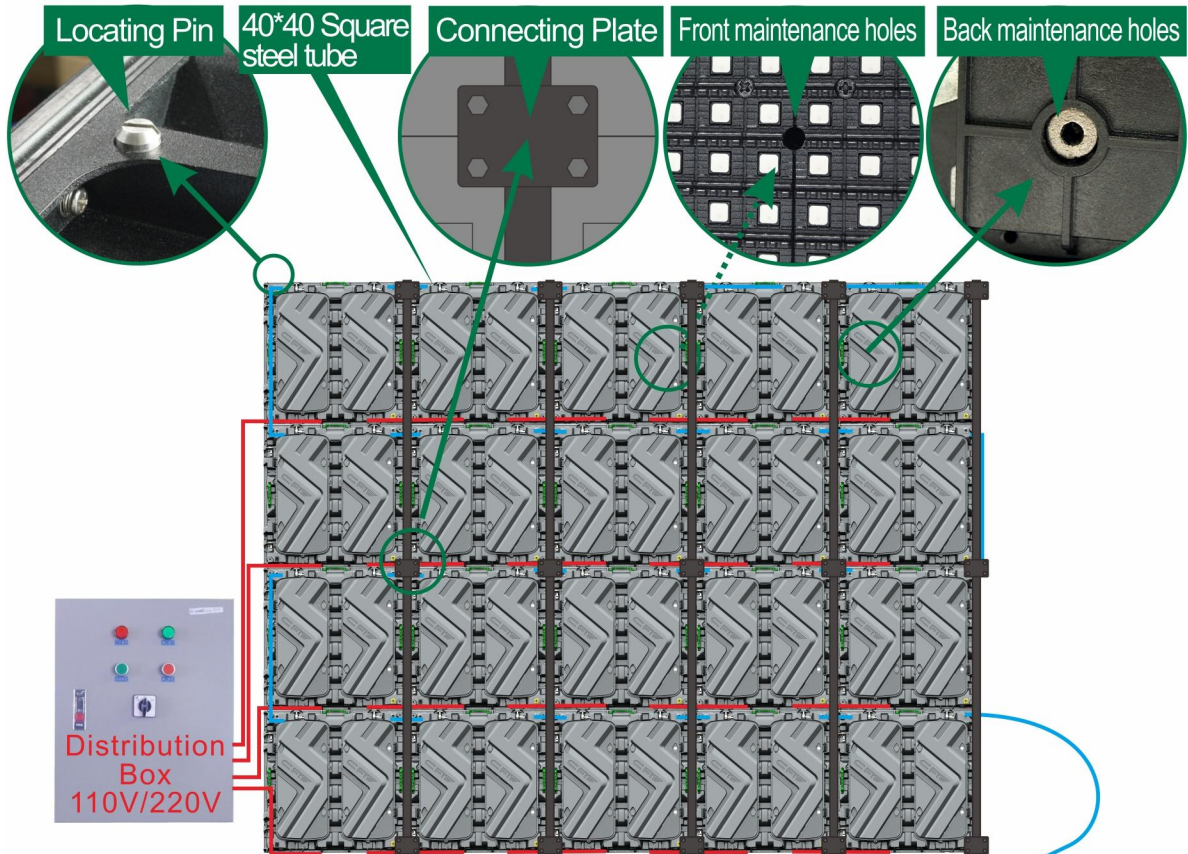
Module Parameter	Item	Specification Parameter
		Pixel Pitch、Resolution rate、size
	Pixel color、 Pixel LED	1R1G1B、 SMD3535 灯
	Working voltage、 Module Power	DC4.6V, 60W
	Driving IC、 Driving way	MBI5124GP、 1/2S
	HUB	QP-HUB75
Cabinet Parameter	Material、 Cabinet Weight(kg/Cabinet)	Aluminum/Sheet metal、 28kg/Cabinet
	Resolution rate、 size、 Module quantity	64*96 Dots、 640*960*125mm、 2*3
	Density	10000 Dots/m <sup>2</sup>
	White balance 、 Color temperature	6000CD/m <sup>2</sup> 、 6500 K
	view angel、 Non-Flatness、 Module interval	H: 110°; V: 110°、 <1mm、 <1mm
	Maximal power/m <sup>2</sup> 、 Average power/m <sup>2</sup>	600W/m <sup>2</sup> 、 240W/m <sup>2</sup>
	Frame frequency、 Refresh frequency、 Gray grade	60Hz、 1920Hz、 13bit
	Control system、 System supports	Novastar / Linsn /、 Windows XP,WIN 7,
	Working temperature、 Protection grade	-20~50℃、 Front/Back: IP65/IP54
*Different configuration different parameters, only for reference , Details, please consult Shenzhen Chip Optech Co., Ltd.		

### Package Parameters :

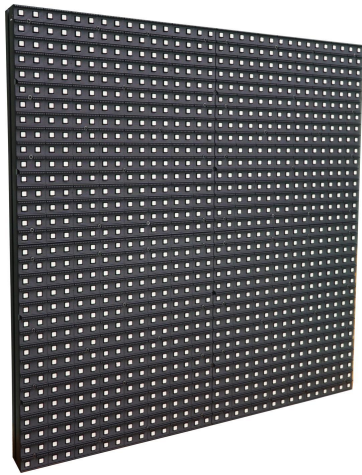
Gross Weight ( kg )	128kg ( Estimated data,4pcs /Case )
Outer Package Size	710*660*1140mm ( Estimated size,4pcs /Case )
Packing Material	Carton+ Wooden stand



**Assembly Sketch Map/Power Cable And Signal Cable Connection Sketch Map:**



## Specification for P10(960x960mm magnesium alloy die-casting cabinet) dual maintenance full color LED display



**Module**

**Cabinet**



### Features:

- AH-** High precision: Die-casting integrally formed cabinet, tolerance  $<0.1\text{mm}$ , high assembly precision and good flatness.
- AI-** Ultra-thin:  $15\text{kg}/\text{m}^2$  lighter than iron cabinet and 20% thinner; reducing transportation and steel structure costs.
- AJ-** Multi-purpose: It can be used for advertising, rental and perimeter Led display and other large screens.
- AK-** Front maintenance design; equipped with front maintenance module, it can be installed against the wall to achieve fast assemble, disassemble and maintain from the front.
- AL-** Easy upgrade and replacement: the cabinet is adapted to P4~20mm modules, no need to change the cabinet for upgrade, saving manpower and cabinet costs;
- AM-** High brightness: brightness  $\geq 6000\text{CD}/\text{m}^2$ , the picture is still clear under strong light;
- AN-** Fast delivery: intelligent automatic standard production, a large number of stock in European and American warehouses, fast delivery;
- AO-** High cost performance: IP65 protection level; aluminum-magnesium alloy material with good price, wind, rain, salt spray and corrosion resistance. suitable for outdoor large-scale advertisements such as outdoor walls and base stacking.

### Technical Parameters :

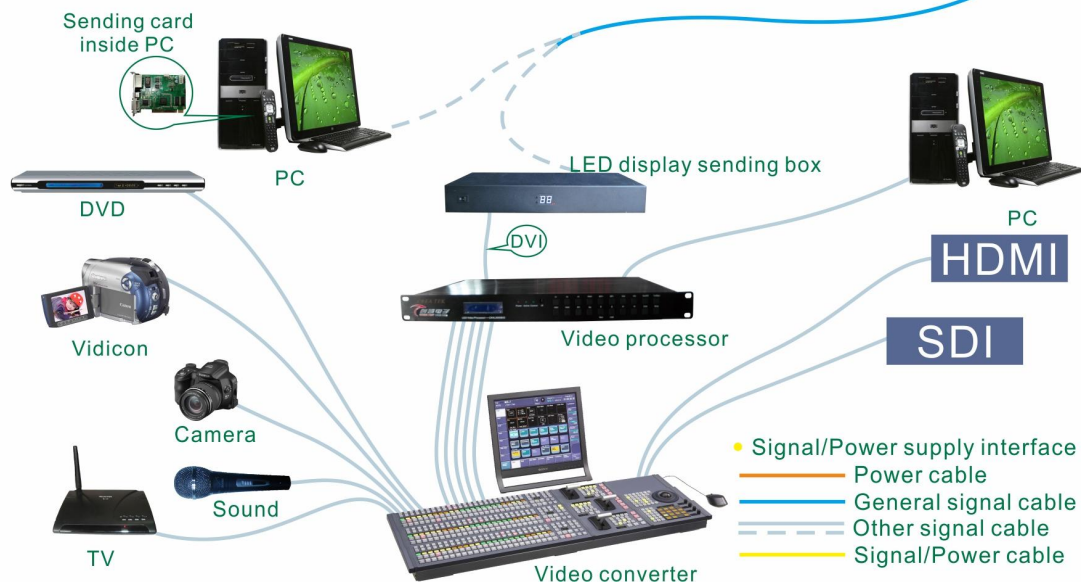
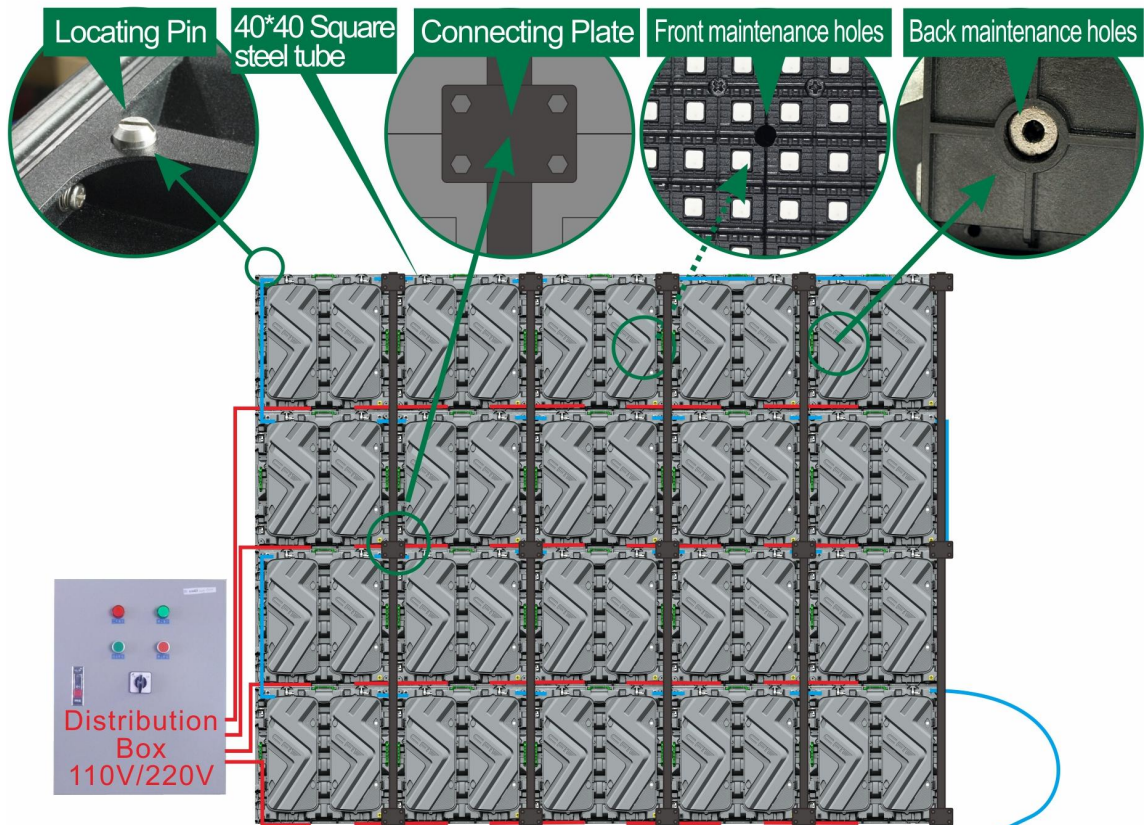
	Item	Specification Parameter
Module Parameter	Pixel Pitch、 Resolution rate、 size	10mm、 32*32 Dots、 320*320*30mm
	Pixel color、 Pixel LED	1R1G1B、 SMD3535 灯
	Working voltage、 Module Power	DC4.6V, 60W
	Driving IC、 Driving way	MBI5124GP、 1/2S
	HUB	QP-HUB75
Cabinet Parameter	Material、 Cabinet Weight(kg/Cabinet)	Aluminum/Sheet metal、 39kg/Cabinet
	Resolution rate、 size、 Module quantity	96*96 Dots、 960*960*150mm、 3*3
	Density	10000 Dots/m <sup>2</sup>
	White balance 、 Color temperature	6000CD/m <sup>2</sup> 、 6500 K
	view angel、 Non-Flatness、 Module interval	H: 110°; V: 110°、 <1mm、 <1mm
	Maximal power/m <sup>2</sup> 、 Average power/m <sup>2</sup>	600W/m <sup>2</sup> 、 240W/m <sup>2</sup>
	Frame frequency、 Refresh frequency、 Gray grade	60Hz、 1920Hz、 13bit
	Control system、 System supports	Novastar / Linsn /、 Windows XP,WIN 7,
	Working temperature、 Protection grade	-20~40℃、 Front/Back: IP65/IP54
<p>*Parameters slightly vary in different configurations</p> <p>*Notes: This is for reference only. We welcome your consultant.</p> <p>Final interpretation is owned by Shenzhen Chip Optech Co., Ltd.</p>		

### Package Parameters :

Gross Weight (kg)	176kg (Estimated data,4pcs /Case)
Outer Package Size	1020*690*1220mm (Estimated data,2pcs /Case)
Packing Material	Carton+Pearl cotton +wooden pallet

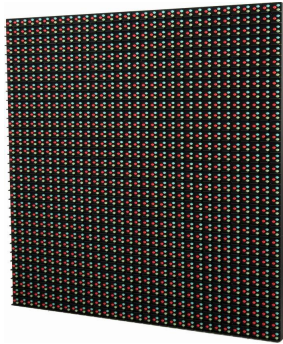


**Assembly Sketch Map/Power Cable And Signal Cable Connection Sketch Map:**



# P10 DIP346 Outdoor Dual-maintenance Module Full Color Led Display Specification

V: 2022. 03. 29



**Module**

**Cabinet**



## Features:

- AP-Lighter and thinner: 15kg/m<sup>2</sup> lighter than conventional iron cabinet and 20% thinner than conventional cabinet; saving transportation space, light weight and low transportation cost, reducing the load-bearing requirements of buildings and frameworks.
- AQ- Multi-functional: It can be used for fixed installation of advertising, if adding hanging beams, connectors, fast lock, it can be used as rentals; and if adding pillows and bracket, it can used as stadium.
- AR- Optional front maintenance design: optional front maintenance and installation module, easy installation and maintenance on the wall.
- AS-Low-cost for upgrading: The cabinet can adapted to outdoor P4~20mm pixel pitch modules, no need to change the cabinet to do the upgrade, saving labor cost and the easy for operation.
- AT-High brightness, the brightness can reach more than 8500nit, and the picture effect is still clear under strong outdoor light;
- AU- High precision: Cast aluminum integral molding process CNC machining, the shape tolerance is less than 0.1mm, with high assembly precision, and good flatness.
- AV-Negative pressure double cyclone cooling system: mute super strong circulation cooling without dead angle.
- AW-Fully automated standard manufacturing, a large number of stock in European and American warehouses, with fast delivery;
- AX- Cost-effective: IP65 protection grade; resistant to wind, rain, salt spray and corrosion with aluminum-magnesium alloy material.

### Technical Parameters :

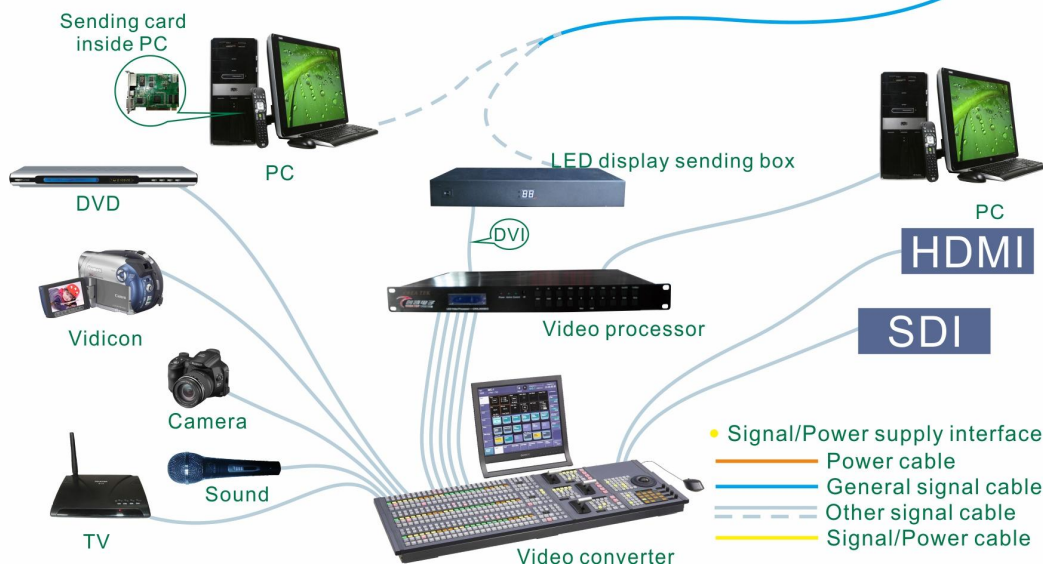
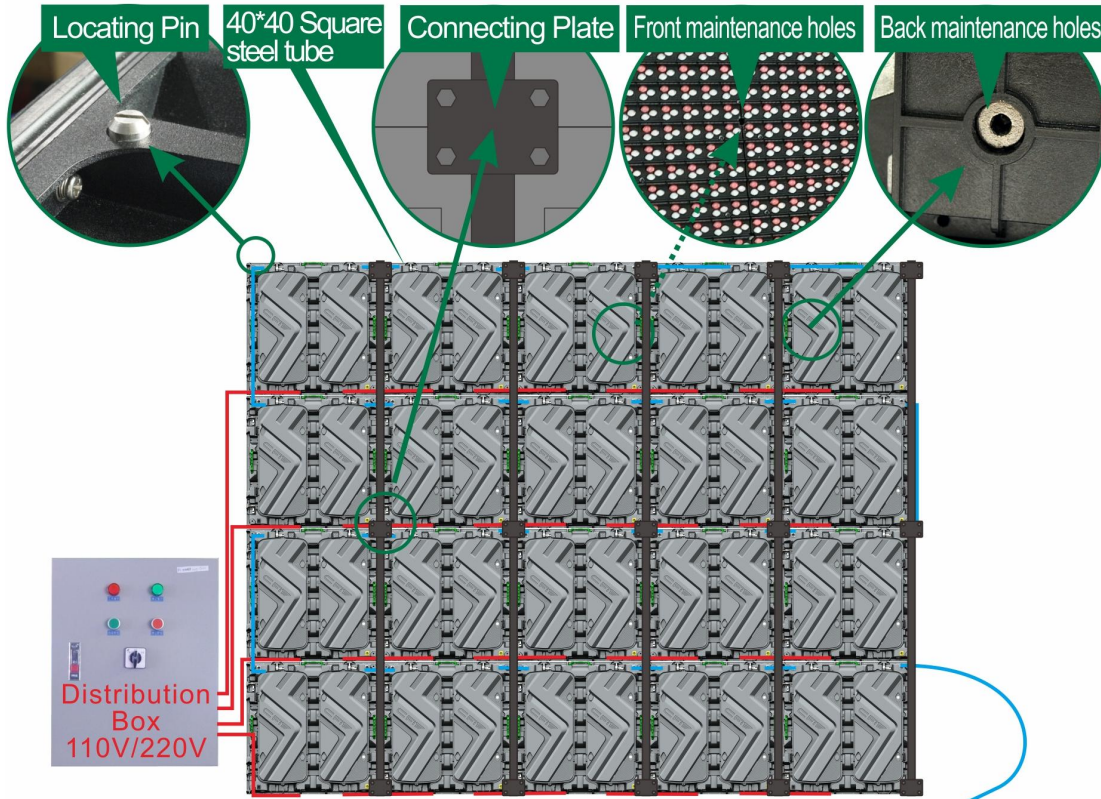
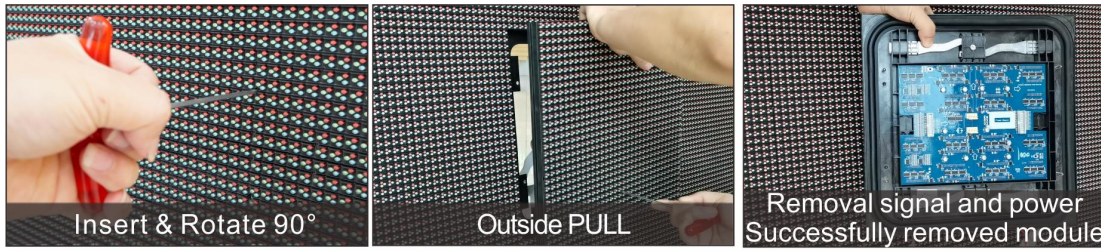
	Item	Specification Parameter
Module Parameter	Pixel Pitch、Resolution rate、size	10mm、32*32 Dots、320*320*30mm
	Pixel color、 Pixel LED	1R1G1B、 DIP346
	Working voltage、 Module Power	DC4.6V、 60W
	Driving IC、 Driving way	MBI5124、 1/4
	HUB	HUB 75
Cabinet Parameter	Material、 Cabinet Weight(kg/Cabinet)	Cast Aluminum、 30kg/Cabinet
	Resolution rate、 size、 Module quantity	64*96Dots、 640*960*130mm、 2*3
	Density	10000 Dots/m <sup>2</sup>
	White balance 、 Color temperature	8500CD/m <sup>2</sup> 、 6500-8000K
	view angel、 Non-Flatness、 Module interval	H/V: 110°/55°、 <0.5mm、 <0.5mm
	Maximal power/m <sup>2</sup> 、 Average power/m <sup>2</sup>	600W/m <sup>2</sup> 、 240W/m <sup>2</sup>
	Frame frequency、 Refresh frequency、 Gray grade	60Hz、 1920Hz、 14bit
	Control system、 System supports	CHIPSHOW、 Windows XP,WIN 7,
	Working temperature、 Protection grade	-20~50℃、 Front/Back: IP65/IP54
Different configuration different parameters, only for reference , Details, please consult Shenzhen Chip Optech Co., Ltd.		

### Package Parameters :

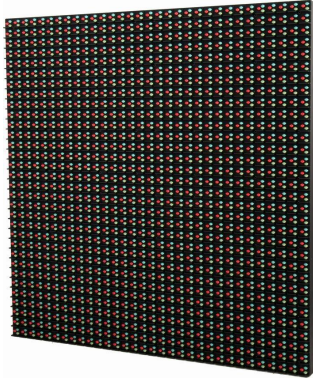
Gross Weight (kg)	135kg (Estimated data,4pcs /Case)
Outer Package Size	710*690*1220mm (Estimated size,4pcs /Case)
Packing Material	Carton+ Wooden stand



**Assembly Sketch Map/Power Cable And Signal Cable Connection Sketch Map:**



## Specification for P10(960x960mm magnesium alloy die-casting cabinet) dual maintenance full color LED display



**Module**

**Cabinet**



### Features:

- AY**-High precision: Die-casting integrally formed cabinet, tolerance <math><0.1\text{mm}</math>, high assembly precision and good flatness.
- AZ**-Ultra-thin:  $15\text{kg}/\text{m}^2$  lighter than iron cabinet and 20% thinner; reducing transportation and steel structure costs.
- BA**- Multi-purpose: It can be used for advertising, rental and perimeter Led display and other large screens.
- BB**-Front maintenance design; equipped with front maintenance module, it can be installed against the wall to achieve fast assemble, disassemble and maintain from the front.
- BC**-Easy upgrade and replacement: the cabinet is adapted to P4~20mm modules, no need to change the cabinet for upgrade, saving manpower and cabinet costs;
- BD**- High brightness: brightness  $\geq 8500\text{CD}/\text{m}^2$ , the picture is still clear under strong light;
- BE**-Fast delivery: intelligent automatic standard production, a large number of stock in European and American warehouses, fast delivery;
- BF**-High cost performance: IP65 protection level; aluminum-magnesium alloy material with good price, wind, rain, salt spray and corrosion resistance.suitable for outdoor large-scale advertisements such as outdoor walls and base stacking.

### Technical Parameters :

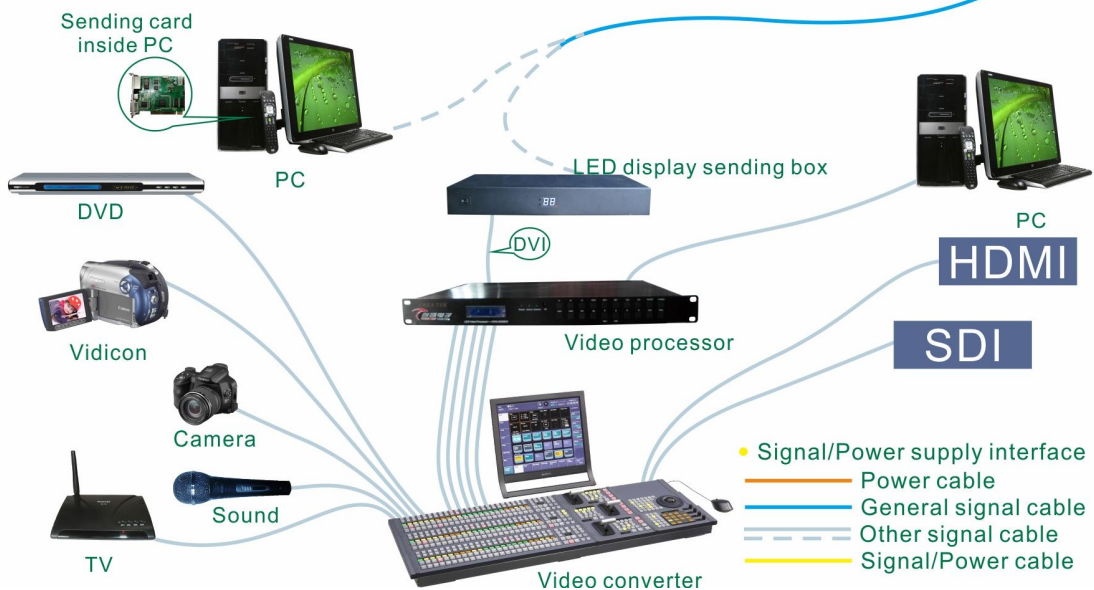
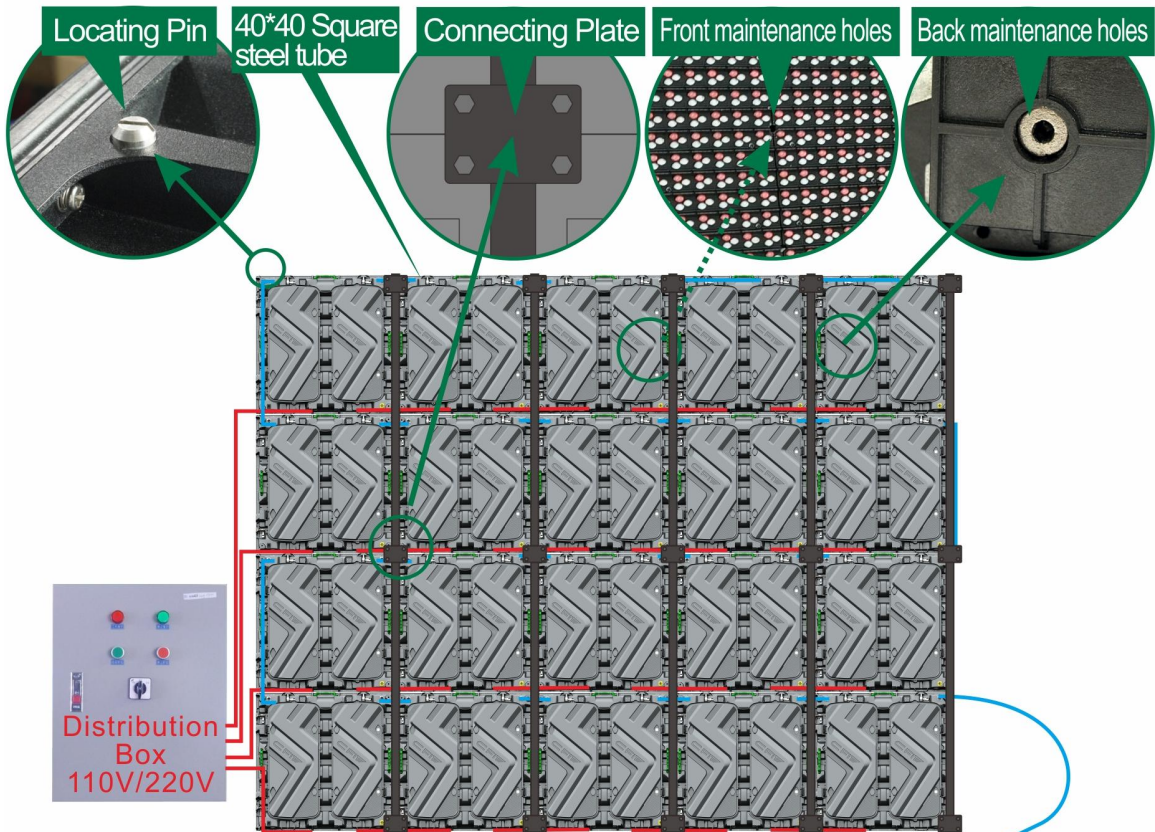
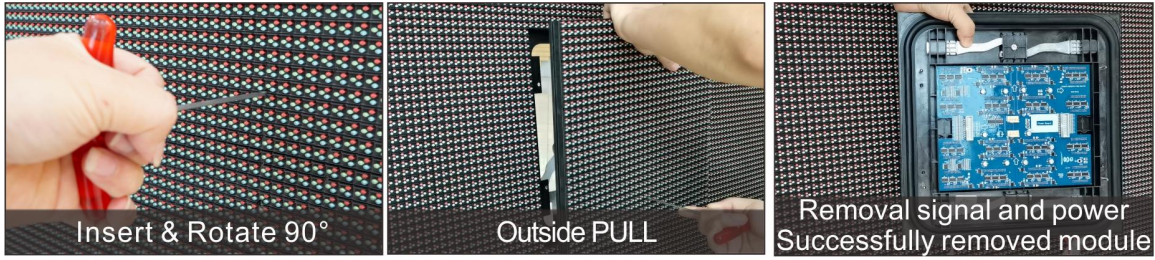
	Item	Specification Parameter
Module Parameter	Pixel Pitch、 Resolution rate、 size	10mm、 32*32 Dots、 320*320*30mm
	Pixel color、 Pixel LED	1R1G1B、 DIP346
	Working voltage、 Module Power	DC4.6V、 60W
	Driving IC、 Driving way	2038S、 1/4
	HUB	HUB 75
Cabinet Parameter	Material、 Cabinet Weight(kg/Cabinet)	Aluminum/Sheet metal、 39kg/Cabinet
	Resolution rate、 size、 Module quantity	96*96Dots、 960*960*150mm、 3*3
	Density	10000 Dots/m <sup>2</sup>
	White balance 、 Color temperature	8500CD/m <sup>2</sup> 、 6500-8000K
	view angel、 Non-Flatness、 Module interval	H/V: 110°/55°、 <0.5mm、 <0.5mm
	Maximal power/m <sup>2</sup> 、 Average power/m <sup>2</sup>	600W/m <sup>2</sup> 、 240W/m <sup>2</sup>
	Frame frequency、 Refresh frequency、 Gray grade	60Hz、 1920Hz、 14bit
	Control system、 System supports	CHIPSHOW、 Windows XP,WIN 7,
	Working temperature、 Protection grade	-20℃ - +50℃、 Front/Back: IP65/IP54

### Package Parameters :

Gross Weight (kg)	176kg (Estimated data,4pcs /Case)
Outer Package Size	1020*690*1220mm (Estimated data,2pcs /Case)
Packing Material	Carton+Pearl cotton +wooden pallet

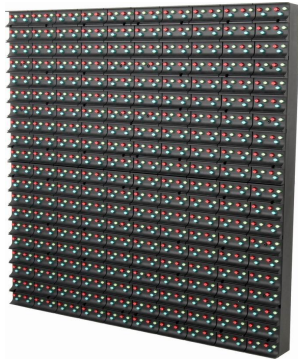


**Assembly Sketch Map/Power Cable And Signal Cable Connection Sketch Map:**



# P16 DIP346 Outdoor Dual-maintenance Module Full Color Led Display Specification

V: 2022.03.29



**Module**

**Cabinet**



## Features:

- BG- Lighter and thinner: 15kg/m<sup>2</sup> lighter than conventional iron cabinet and 20% thinner than conventional cabinet; saving transportation space, light weight and low transportation cost, reducing the load-bearing requirements of buildings and frameworks.
- BH- Multi-functional: It can be used for fixed installation of advertising, if adding hanging beams, connectors, fast lock, it can be used as rentals; and if adding pillows and bracket, it can be used as stadium.
- BI- Optional front maintenance design: optional front maintenance and installation module, easy installation and maintenance on the wall.
- BJ- Low-cost for upgrading: The cabinet can be adapted to outdoor P4~20mm pixel pitch modules, no need to change the cabinet to do the upgrade, saving labor cost and being easy for operation.
- BK- High brightness, the brightness can reach more than 8500nit, and the picture effect is still clear under strong outdoor light;
- BL- High precision: Cast aluminum integral molding process CNC machining, the shape tolerance is less than 0.1mm, with high assembly precision, and good flatness.
- BM- Negative pressure double cyclone cooling system: mute super strong circulation cooling without dead angle.
- BN- Fully automated standard manufacturing, a large number of stock in European and American warehouses, with fast delivery;
- BO- Cost-effective: IP65 protection grade; resistant to wind, rain, salt spray and corrosion with aluminum-magnesium alloy material.

### Technical Parameters :

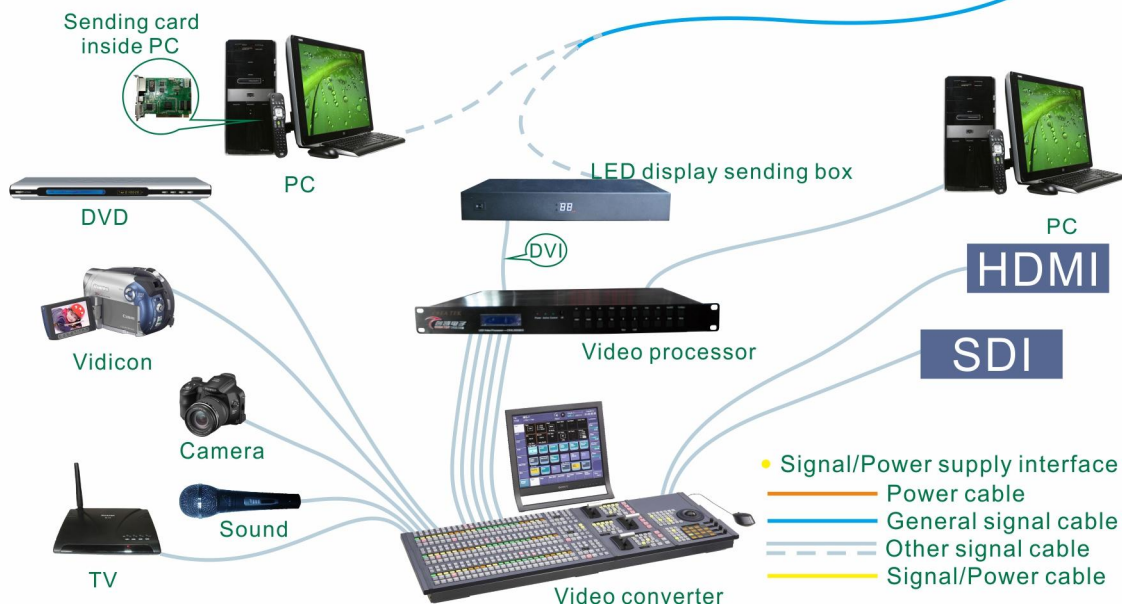
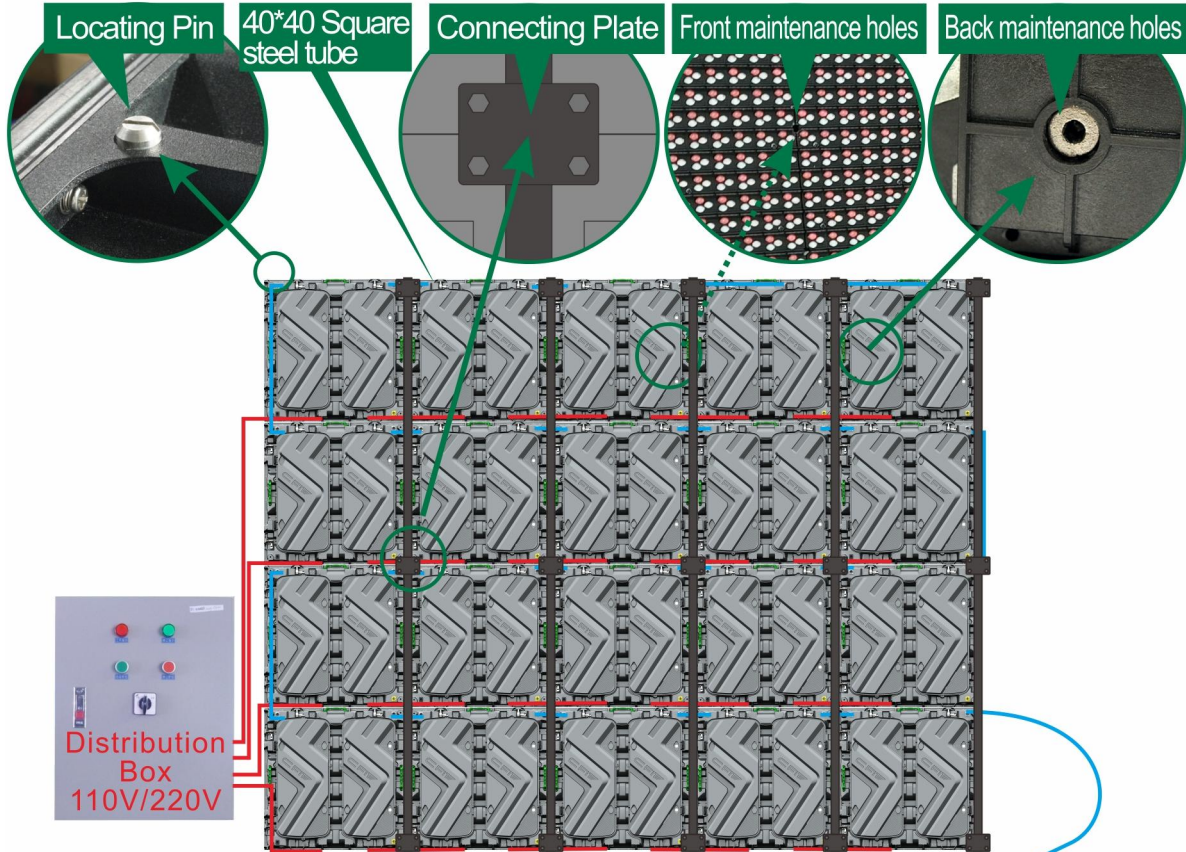
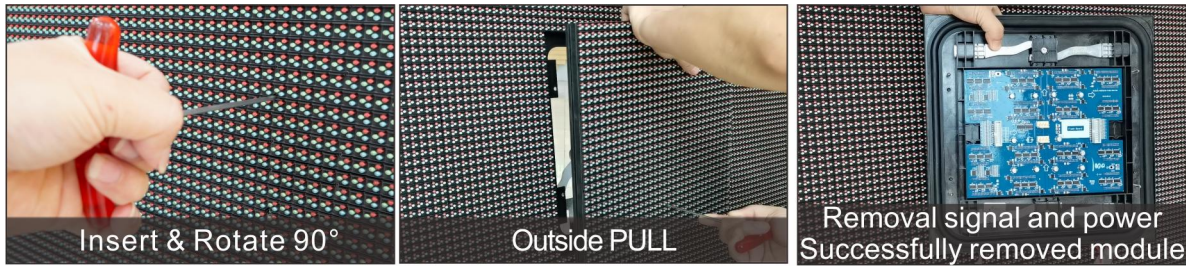
	Item	Specification Parameter
Module Parameter	Pixel Pitch、 Resolution rate、 size	16mm、 20*20 Dots、 320*320*30mm
	Pixel color、 Pixel LED	1R1G1B、 DIP346
	Working voltage、 Module Power	DC4.6V、 55W
	Driving IC、 Driving way	MBI5124、 Static
	HUB	HUB 16
	Cabinet Parameter	Material、 Cabinet Weight(kg/Cabinet)
Resolution rate、 size、 Module quantity		40*60 Dots、 640*960*130mm、 2*3
Density		3906 Dots/m <sup>2</sup>
White balance 、 Color temperature		8500 CD/m <sup>2</sup> 、 6500 K
view angel、 Non-Flatness、 Module interval		H/V: 110°/50°、 <1mm、 <1mm
Maximal power/m <sup>2</sup> 、 Average power/m <sup>2</sup>		550 W/m <sup>2</sup> 、 220W/m <sup>2</sup>
Frame frequency、 Refresh frequency、 Gray grade		60Hz、 1920Hz、 16bit
Control system、 System supports		CHIPSHOW、 Windows XP,WIN 7,
Working temperature、 Protection grade		-20~50℃、 Front/Back: IP65/IP54
*Different configuration different parameters, only for reference , Details, please consult Shenzhen Chip Optech Co., Ltd.		

### Package Parameters :

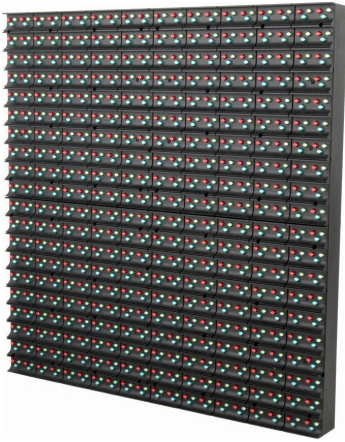
Gross Weight (kg)	135kg (Estimated data,4pcs /Case)
Outer Package Size	710*690*1220mm (Estimated size,4pcs /Case)
Packing Material	Carton+ Wooden stand



**Assembly Sketch Map/Power Cable And Signal Cable Connection Sketch Map:**



## Specification for P16(960x960mm magnesium alloy die-casting cabinet) dual maintenance full color LED display



**Module**

**Cabinet**



### Features:

- BP-**High precision: Die-casting integrally formed cabinet, tolerance <math><0.1\text{mm}</math>, high assembly precision and good flatness.
- BQ-** Ultra-thin:  $15\text{kg}/\text{m}^2$  lighter than iron cabinet and 20% thinner; reducing transportation and steel structure costs.
- BR-**Multi-purpose: It can be used for advertising, rental and perimeter Led display and other large screens.
- BS-**Front maintenance design; equipped with front maintenance module, it can be installed against the wall to achieve fast assemble, disassemble and maintain from the front.
- BT-**Easy upgrade and replacement: the cabinet is adapted to P4~20mm modules, no need to change the cabinet for upgrade, saving manpower and cabinet costs;
- BU-** High brightness: brightness  $\geq 8500\text{CD}/\text{m}^2$ , the picture is still clear under strong light;
- BV-**Fast delivery: intelligent automatic standard production, a large number of stock in European and American warehouses, fast delivery;
- BW-**High cost performance: IP65 protection level; aluminum-magnesium alloy material with good price, wind, rain, salt spray and corrosion resistance.suitable for outdoor large-scale advertisements such as outdoor walls and base stacking.

**Technical Parameters :**

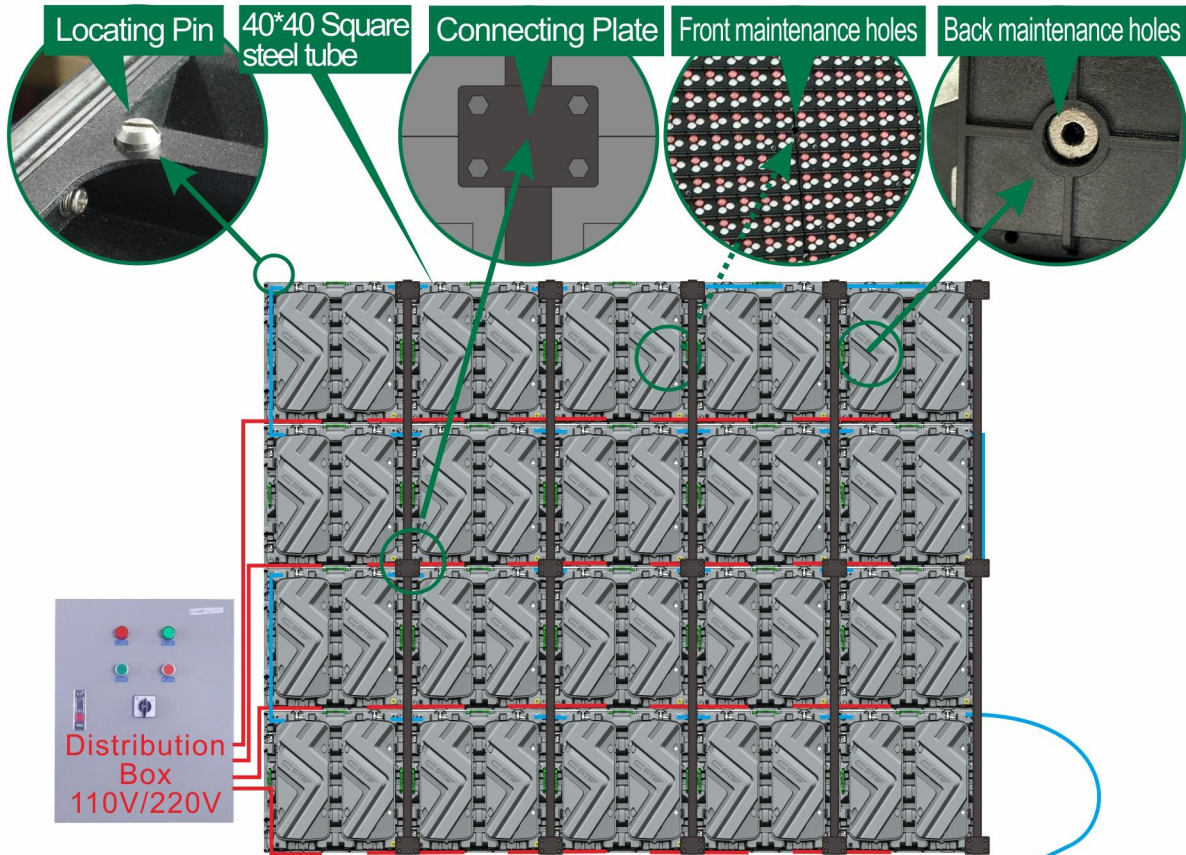
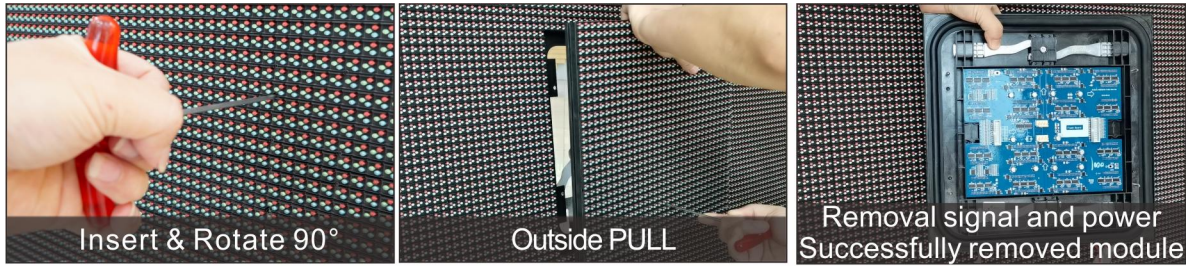
	Item	Specification Parameter
Module Parameter	Pixel Pitch、Resolution rate、size	16mm、20*20 Dots、320*320*30mm
	Pixel color、 Pixel LED	1R1G1B、 厦门信达 DIP346
	Working voltage、 Module Power	DC4.6V、 55W
	Driving IC、 Driving way	2038S、 静态
	HUB	HUB 16
	Cabinet Parameter	Material、 Cabinet Weight(kg/Cabinet)
Resolution rate、 size、 Module quantity		60*60 Dots、 960*960*150mm、 3*3
Density		3906 Dots/m <sup>2</sup>
White balance 、 Color temperature		8500 CD/m <sup>2</sup> 、 6500 K
view angel、 Non-Flatness、 Module interval		H/V: 110°/50°、 <1mm、 <1mm
Maximal power/m <sup>2</sup> 、 Average power/m <sup>2</sup>		550 W/m <sup>2</sup> 、 220W/m <sup>2</sup>
Frame frequency、 Refresh frequency、 Gray grade		60Hz、 1920Hz、 16bit
Control system、 System supports		CHIPSHOW、 Windows XP,WIN 7,
Working temperature、 Protection grade		-20℃ - +50℃、 Front/Back: IP65/IP54

**Package Parameters :**

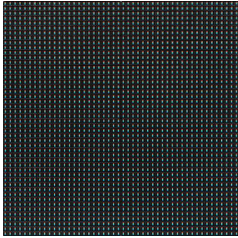
Gross Weight (kg)	176kg (Estimated data,4pcs /Case)
Outer Package Size	1020*690*1220mm (Estimated data,2pcs /Case)
Packing Material	Carton+Pearl cotton +wooden pallet



**Assembly Sketch Map/Power Cable And Signal Cable Connection Sketch Map:**

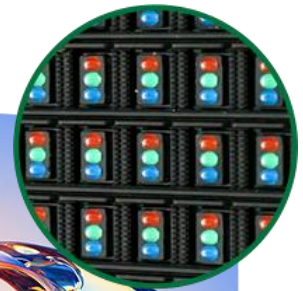


# Specifications for outdoor P10 960 \* 960 HD full color LED display



## Module

ICE LEDs



## Cabinet



- ◆ **High Brightness & Energy Efficiency:** Equipped with ICE high-brightness LEDs.
- ◆ **Superior Image Quality:** Circuit optimization design ensures low gray white balance with no color cast, delivering sharp and smooth visuals.
- ◆ **Ultra-Thin & Lightweight:** Magnesium alloy die-cast cabinet, single cabinet as thin as 87mm with weight <15kg, finished cabinet <35kg, easy to transport and install.
- ◆ **High Precision:** Die-casting + CNC processing for seamless splicing with enhanced precision.
- ◆ **High Protection:** Front IP65 for superior durability.
- ◆ **Efficient Heat Dissipation:** Proprietary dual-flow negative pressure cooling system ensures heat is effectively expelled, guaranteeing stable operation.
- ◆ **Quick Installation:** fast-lock mechanism allows cabinet splicing in just 10s, significantly improving installation efficiency.
- ◆ **Wide Applications:** Ideal for stadiums, commercial displays, ports, stations, schools, etc. Supporting fixed installations, hanging, perimeter displays, and traffic screens.

### Technical Parameters :

	Item	Specification Parameter
Module Parameter	Pixel Pitch、 Resolution rate、 size	10mm、 32*32、 320*320mm
	Pixel color、 Pixel LED	1R1G1B、 ICE LEDs
	Working voltage、 Module Power	DC5V
	Driving IC、 Driving way	MB15124、 1/2
	HUB	HUB75
Cabinet Parameter	Material、 Cabinet Weight(kg/Cabinet)	Magnesium alloy die-casting、 >35kg / Cabinet
	Resolution rate、 size、 Module quantity	96*96Dots、 960*960*87mm、 3*6
	Density	10000 Dots/m <sup>2</sup>
	Color temperature	6000-8000K
	Mode 1: White balance; Maximal power/m <sup>2</sup> 、 Average power/m <sup>2</sup> Video PCB temperature/white screen PCB temperature	14000 CD/m <sup>2</sup> ; <650W/m <sup>2</sup> 、 <195W/m <sup>2</sup> 42°C/60°C
	Mode 2: White balance; Maximal power/m <sup>2</sup> 、 Average power/m <sup>2</sup> Video PCB temperature/white screen PCB temperature	10600 CD/m <sup>2</sup> ; <490W/m <sup>2</sup> 、 <150W/m <sup>2</sup> 35°C/50°C
	Mode 3: White balance; Maximal power/m <sup>2</sup> 、 Average power/m <sup>2</sup> Video PCB temperature/white screen PCB temperature	5000 CD/m <sup>2</sup> ; <230W/m <sup>2</sup> 、 <70W/m <sup>2</sup> 26°C/38°C
	view angel、 Non-Flatness、 Module interval	H/V: 100° /50° 、 <0.2mm、 <0.2mm
	Frame frequency、 Refresh frequency、 Gray grade	60Hz、 3840Hz、 13bit
	Control system、 System supports	CHIPSHOW, Windows XP, WIN 7
Working temperature、 Protection grade	- 20~50°C、 Front/Back: IP65/IP54	
<b>*Reference information, different configurations, different parameters</b>		

### Package Parameters :

Gross Weight (kg)	90kg (Estimated data,2pcs /Case)
Outer Package Size	1030*350*1150mm (Estimated data,2pcs /Case)
Packing Material	Carton + wooden pallet + pearl cotton  * Packaging for reference only, Please refer to the actual order.



**Assembly Sketch Map/Power Cable And Signal Cable Connection Sketch Map:**

