



Test Report issued under the responsibility of:



The following sample(s) was/were submitted and identified on behalf of the client as:

TEST REPORT	
Road vertical signs - Variable message traffic signs Temperature tests in accordance with EN12966-1:2005 + A1:2009	
Report Reference No.	GZES231102107502
Tested by (name + signature)	Julian Zhang/Alex Tan <i>Julian Zhang Alex Tan</i>
Approved by (+ signature)	Ivory Lu <i>Ivory Lu</i>
Date of issue	2025-04-10; Amendment 01: 2026-02-02
Total number of pages	16
Testing Laboratory	SGS-CSTC Standards Technical Services Co., Ltd. Guangzhou Branch
Address	198 Kezhu Road, Science City, Economic & Technology Development Area, Guangzhou, Guangdong, China
Applicant's name	Shenzhen Chip Optech Co., Ltd.
Address	5th Floor, Tower C, Baoshi Technological Park, Baoshi Road, Shiyan Street, Bao'an District, Shenzhen, China
Test specification:	
Test procedure	<input checked="" type="checkbox"/> EN12966-1:2005 + A1: 2009; <input type="checkbox"/> EN 60068-2-1: 2007; <input type="checkbox"/> EN 60068-2-2: 2007; <input type="checkbox"/> EN 60068-2-5: 2018; <input checked="" type="checkbox"/> EN 60068-2-14: 2009; <input checked="" type="checkbox"/> EN 60068-2-30: 2005
Non-standard test method	None
Test Report Form No.	EN 12966-1_B_TEMP Test
Test Report Form(s) Originator	SGS-CSTC
Master TRF	2025-07-30



Unless otherwise agreed in writing, this document is issued by the Company subject to its General Conditions of Service printed overleaf, available on request or accessible at <https://www.sgs.com/en/Terms-and-Conditions>. Attention is drawn to the limitation of liability, indemnification and jurisdiction issues defined therein. Any holder of this document is advised that information contained hereon reflects the Company's findings at the time of its intervention only and within the limits of Client's instructions, if any. The Company's sole responsibility is to its Client and this document does not exonerate parties to a transaction from exercising all their rights and obligations under the transaction documents. This document cannot be reproduced except in full, without prior written approval of the Company. Any unauthorized alteration, forgery or falsification of the content or appearance of this document is unlawful and offenders may be prosecuted to the fullest extent of the law. Unless otherwise stated the results shown in this test report refer only to the sample(s) tested and such sample(s) are retained for 30 days only.

Attention: To check the authenticity of testing /inspection report & certificate, please contact us at telephone: (86-755) 8307 1443, or email: CN.Doccheck@sgs.com

SGS-CSTC Standards Technical Services Co., Ltd. | No.198, Kezhu Road, Science City, Economic & Technological Development Area, Guangzhou, Guangdong, China 510663 | t (86-20) 82155555 | www.sgs.com.cn
Guangzhou Branch | 中国·广东·广州高新技术产业开发区科学城科珠路198号 邮编: 510663 | t (86-20) 82155555 | sgs.china@sgs.com

Member of the SGS Group (SGS SA)

TRF No. EN 12966-1_B_TEMP Test

Test item description.....:	LED Display Screen
Model/Type reference.....:	VMS16S-4535RGB, VMS10S-4535RGB
Ratings	100-240Va.c.; 50/60Hz; 1,5A Max
Brand name	—
Manufacturer	Same as applicant
Factory.....:	Huizhou Mepro Optech Co., Ltd. Tower 12, Xinhua Av. No 6, Chenjiang Street, Zhongkai Hi-Tech District, Huizhou, China
Summary of testing:	
<p>1. This report is based on the original test report GZES231102107502, dated 2025-04-10 and all test data refer to this report except the following changes:</p> <p>-Added 1 new model: VMS10S-4535RGB</p> <p>-The new model has a similar construction to the original model VMS16S-4535RGB except for the LED module size and pitch.</p> <p>-After review, an additional test of damp heat cycling (Test Db – Variant 1.) was considered necessary.</p>	
Tests performed:	
<p>When determining the test conclusion, the Measurement Uncertainty of test has been considered.</p> <p>The sample(s) are tested and complied relevant clauses of below standards, see test results for details.</p>	
Standard	Title
EN12966-1:2005 + A1:2009	Road vertical signs - Variable message traffic signs - Part 1: Product standard
EN 60068-2-14:2009	Environmental testing — Part 2: Tests — Test N: Change of temperature
EN 60068-2-30:2005	Environmental testing — Part 2-30: Tests — Test Db: Damp heat, cyclic



Unless otherwise agreed in writing, this document is issued by the Company subject to its General Conditions of Service printed overleaf, available on request or accessible at <https://www.sgs.com/en/Terms-and-Conditions>. Attention is drawn to the limitation of liability, indemnification and jurisdiction issues defined therein. Any holder of this document is advised that information contained hereon reflects the Company's findings at the time of its intervention only and within the limits of Client's instructions, if any. The Company's sole responsibility is to its Client and this document does not exonerate parties to a transaction from exercising all their rights and obligations under the transaction documents. This document cannot be reproduced except in full, without prior written approval of the Company. Any unauthorized alteration, forgery or falsification of the content or appearance of this document is unlawful and offenders may be prosecuted to the fullest extent of the law. Unless otherwise stated the results shown in this test report refer only to the sample(s) tested and such sample(s) are retained for 30 days only.

Attention: To check the authenticity of testing /inspection report & certificate, please contact us at telephone: (86-755) 8307 1443, or email: CN.Doccheck@sgs.com

SGS-CS Standards Technical Services Co., Ltd. | No.198, Kezhu Road, Science City, Economic & Technological Development Area, Guangzhou, Guangdong, China 510663 | t (86-20) 82155555 | www.sgsgroup.com.cn
Guangzhou Branch | 中国·广东·广州高新技术产业开发区科学城科珠路198号 | 邮编: 510663 | t (86-20) 82155555 | sgs.china@sgs.com

Member of the SGS Group (SGS SA)

Possible test case verdicts:	
- test case does not apply to the test object	N (or N/A)
- test object does meet the requirement	P (Pass)
- test object does not meet the requirement	F (Fail)
Testing	
Date of receipt of test item	2023-11-28, 2025-12-16
Date (s) of performance of tests	2024-11-08 to 2024-11-14 2025-12-16 to 2026-01-05
General remarks:	
<p>The test results presented in this report relate only to the object tested. This report shall not be reproduced, except in full, without the written approval of the Issuing testing laboratory. "(see Enclosure #)" refers to additional information appended to the report. "(see appended table)" refers to a table appended to the report.</p> <p>Throughout this report a comma is used as the decimal separator.</p> <p>This document is issued by the Company subject to its General Conditions of Service, available on request or accessible at http://www.sgs.com/en/Terms-and-Conditions.aspx and, for electronic format documents, subject to Terms and Conditions for Electronic Documents at http://www.sgs.com/en/Terms-and-Conditions/Terms-e-Documents.aspx.</p> <p>Attention is drawn to the limitation of liability, indemnification and jurisdiction issues defined therein. Any holder of this document is advised that information contained hereon reflects the Company's findings at the time of its intervention only and within the limits of Client's instructions, if any. The Company's sole responsibility is to its Client and this document does not exonerate parties to a transaction from exercising all their rights and obligations under the transaction documents. This document cannot be reproduced except in full, without prior written approval of the Company. Any unauthorized alteration, forgery or falsification of the content or appearance of this document is unlawful and offenders may be prosecuted to the fullest extent of the law.</p> <p>Unless otherwise stated the results shown in this test report refer only to the sample(s) tested and such sample(s) are retained for 30 days only.</p>	



Unless otherwise agreed in writing, this document is issued by the Company subject to its General Conditions of Service printed overleaf, available on request or accessible at <https://www.sgs.com/en/Terms-and-Conditions>. Attention is drawn to the limitation of liability, indemnification and jurisdiction issues defined therein. Any holder of this document is advised that information contained hereon reflects the Company's findings at the time of its intervention only and within the limits of Client's instructions, if any. The Company's sole responsibility is to its Client and this document does not exonerate parties to a transaction from exercising all their rights and obligations under the transaction documents. This document cannot be reproduced except in full, without prior written approval of the Company. Any unauthorized alteration, forgery or falsification of the content or appearance of this document is unlawful and offenders may be prosecuted to the fullest extent of the law. Unless otherwise stated the results shown in this test report refer only to the sample(s) tested and such sample(s) are retained for 30 days only.

Attention: To check the authenticity of testing /inspection report & certificate, please contact us at telephone: (86-755) 8307 1443, or email: CN.Doccheck@sgs.com

SGS-CSI Standards Technical Services Co., Ltd. | No.198, Kezhu Road, Science City, Economic & Technological Development Area, Guangzhou, Guangdong, China 510663 | t (86-20) 82155555 | www.sgsgroup.com.cn
 Guangzhou Branch of SGS-CSI EEC Laboratory | 中国·广东·广州高新技术产业开发区科学城科珠路198号 邮编: 510663 | t (86-20) 82155555 | sgs.china@sgs.com

Member of the SGS Group (SGS SA)

General product information:

The product VMS is an outdoor full-color LED display. Each element has three LED dies including red, green and blue. The other colors could be displayed by the driver and software.

The equipment under test, consists of a Variable Message Sign (VMS), made of metal and plastic enclosure.

The main technical characteristics are stated as below.

Function	LED Display Screen
Electrical Specifications	
Nominal voltage (V)	AC 100-240
Nominal frequency (Hz)	50 / 60
Nominal full load current (A)	0.2
Max. power consumption (W)	40
Physical Characteristics	
Construction:	metal and plastic enclosure, fixed by screws
Working temperature (°C)	T1/T3
Pollution	D3
Mechanical protection	P3 (IP66)
Structure Characteristics	
Applications	Outdoor
Size of cabinet (mm) (H × W × D)	639 × 639 × 120
Weight of cabinet (kg)	18

The VMS module consists of Power Supply, Filter, Control System and LED panel.

LED module specifications	
Module size (mm) (H × W)	VMS16S-4535RGB: 256 x 256; VMS10S-4535RGB: 320 x 160
Dots per module (H × W)	VMS16S-4535RGB:16 x16; VMS10S-4535RGB:32 x 16
Pitch (mm)	VMS16S-4535RGB:16; VMS10S-4535RGB:10
Single LED parameters	physical dimension: 4,5 x 3,5 mm wavelength (nm): R:620-625 G:531-534 B:469-472



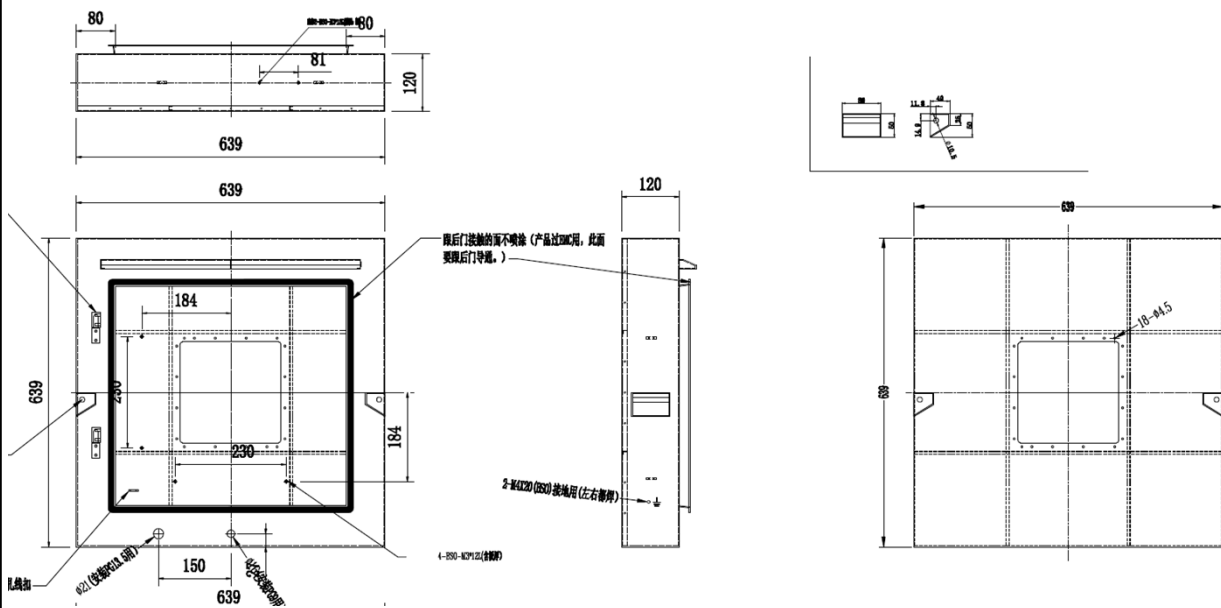
Unless otherwise agreed in writing, this document is issued by the Company subject to its General Conditions of Service printed overleaf, available on request or accessible at <https://www.sgs.com/en/Terms-and-Conditions>. Attention is drawn to the limitation of liability, indemnification and jurisdiction issues defined therein. Any holder of this document is advised that information contained hereon reflects the Company's findings at the time of its intervention only and within the limits of Client's instructions, if any. The Company's sole responsibility is to its Client and this document does not exonerate parties to a transaction from exercising all their rights and obligations under the transaction documents. This document cannot be reproduced except in full, without prior written approval of the Company. Any unauthorized alteration, forgery or falsification of the content or appearance of this document is unlawful and offenders may be prosecuted to the fullest extent of the law. Unless otherwise stated the results shown in this test report refer only to the sample(s) tested and such sample(s) are retained for 30 days only.

Attention: To check the authenticity of testing /inspection report & certificate, please contact us at telephone: (86-755) 8307 1443, or email: CN.Doccheck@sgs.com

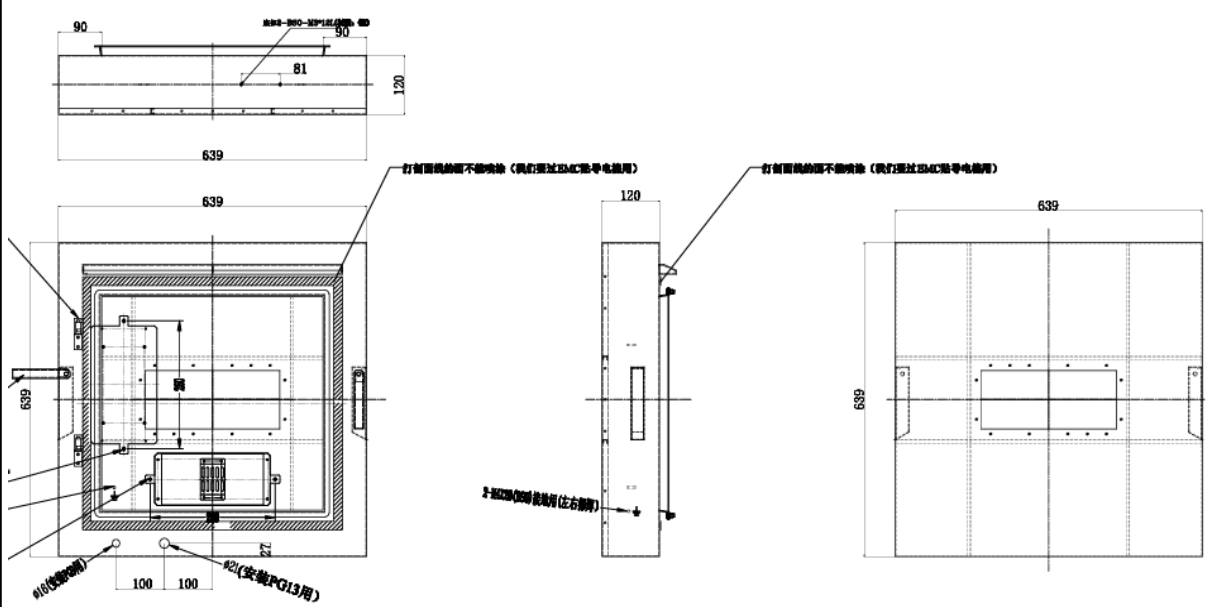
SGS-CS Standards Technical Services Co., Ltd. | No.198, Kezhu Road, Science City, Economic & Technological Development Area, Guangzhou, Guangdong, China 510663 | t (86-20) 82155555 | www.sgs.com.cn
Guangzhou Branch | 中国·广东·广州高新技术产业开发区科学城科珠路198号 | 邮编: 510663 | t (86-20) 82155555 | sgs.china@sgs.com

Member of the SGS Group (SGS SA)

The overall of VMS16S-4535RGB:



The overall of VMS10S-4535RGB:



Unless otherwise agreed in writing, this document is issued by the Company subject to its General Conditions of Service printed overleaf, available on request or accessible at <https://www.sgs.com/en/Terms-and-Conditions>. Attention is drawn to the limitation of liability, indemnification and jurisdiction issues defined therein. Any holder of this document is advised that information contained hereon reflects the Company's findings at the time of its intervention only and within the limits of Client's instructions, if any. The Company's sole responsibility is to its Client and this document does not exonerate parties to a transaction from exercising all their rights and obligations under the transaction documents. This document cannot be reproduced except in full, without prior written approval of the Company. Any unauthorized alteration, forgery or falsification of the content or appearance of this document is unlawful and offenders may be prosecuted to the fullest extent of the law. Unless otherwise stated the results shown in this test report refer only to the sample(s) tested and such sample(s) are retained for 30 days only.

Attention: To check the authenticity of testing /inspection report & certificate, please contact us at telephone: (86-755) 8307 1443, or email: CN.Doccheck@sgs.com

SGS-CSI Standards Technical Services Co., Ltd. | No.198, Kezhu Road, Science City, Economic & Technological Development Area, Guangzhou, Guangdong, China 510663 | t (86-20) 82155555 | www.sgs.com.cn
Guangzhou Branch | 广州分公司 | EEC Laboratory. | 中国·广东·广州高新技术产业开发区科学城科珠路198号 | 邮编: 510663 | t (86-20) 82155555 | sgs.china@sgs.com

Appended table

Damp heat cycling (Test Db – Variant 1.)

R.H. ≥ 95% during the whole test.

TABLE: Damp heat cycling			P
Phase	Description	Time(h)	Result / Remark
1	Initial measurements	--	No visible damage and Function test passed.
2	Ambient temperature (25°C)	--	Function test continuously repeated and passed.
3	Transition from ambient (25°C) to T = 40°C	3	Function test continuously repeated and passed.
4	Isotherm at T = 40°C	9	Function test continuously repeated during the last hour and passed.
5	Transition from T = 40°C to ambient temperature (25°C)	6	EUT off
6	Isotherm at ambient temperature (25°C)	6	EUT off
7	Transition from ambient (25°C) to T = 40°C	3	Function test continuously repeated and passed.
8	Isotherm at T = 40°C	9	Function test continuously repeated during the last hour and passed.
9	Transition from T = 40°C to ambient temperature (25°C)	6	Function test continuously repeated and passed.
10	Isotherm at ambient temperature (25°C)	6	EUT off
11	Final measurements	--	No visible damage and Function test passed.



Unless otherwise agreed in writing, this document is issued by the Company subject to its General Conditions of Service printed overleaf, available on request or accessible at <https://www.sgs.com/en/Terms-and-Conditions>. Attention is drawn to the limitation of liability, indemnification and jurisdiction issues defined therein. Any holder of this document is advised that information contained hereon reflects the Company's findings at the time of its intervention only and within the limits of Client's instructions, if any. The Company's sole responsibility is to its Client and this document does not exonerate parties to a transaction from exercising all their rights and obligations under the transaction documents. This document cannot be reproduced except in full, without prior written approval of the Company. Any unauthorized alteration, forgery or falsification of the content or appearance of this document is unlawful and offenders may be prosecuted to the fullest extent of the law. Unless otherwise stated the results shown in this test report refer only to the sample(s) tested and such sample(s) are retained for 30 days only.

Attention: To check the authenticity of testing /inspection report & certificate, please contact us at telephone: (86-755) 8307 1443, or email: CN.Doccheck@sgs.com

SGS-CS Standards Technical Services Co., Ltd. | No.198, Kezhu Road, Science City, Economic & Technological Development Area, Guangzhou, Guangdong, China 510663 | t (86-20) 82155555 | www.sgsgroup.com.cn
Guangzhou Branch | 中国·广东·广州高新技术产业开发区科学城科珠路198号 | 邮编: 510663 | t (86-20) 82155555 | sgs.china@sgs.com

Member of the SGS Group (SGS SA)

Change of temperature (class T1, T3)

Change of temperature (class T1)				P
Phase	Description	Time(min)	Result / Remark	
1	Initial measurements	--	No visible damage and Function test passed.	
2	Ambient temperature (25°C)	--	Function test continuously repeated and passed.	
3	Transition from ambient (25°C) to T _A = -15°C	40	EUT off	
4	Isotherm at T _A = -15°C	960	EUT off	
5	Transition from T _A = -15°C to T _B = +60°C	75	Function test continuously repeated and passed.	
6	Isotherm at T _B = +60°C	960	Function test continuously repeated during the last hour and passed.	
7	Transition from T _B = +60°C to ambient temperature (25°C)	35	Function test continuously repeated and passed.	
8	Recovery: isotherm at ambient temperature (25°C)	60	EUT off	
9	Final measurements	--	No visible damage and Function test passed.	

Change of temperature (class T3)				P
Phase	Description	Time(min)	Result / Remark	
1	Initial measurements	--	No visible damage and Function test passed.	
2	Ambient temperature (25°C)	--	Function test continuously repeated and passed.	
3	Transition from ambient (25°C) to T _A = -40°C	65	EUT off	
4	Isotherm at T _A = -40°C	960	EUT off	
5	Transition from T _A = -40°C to T _B = +40°C	80	Function test continuously repeated and passed.	
6	Isotherm at T _B = +40°C	960	Function test continuously repeated during the last hour and passed.	
7	Transition from T _B = +40°C to ambient temperature (25°C)	15	Function test continuously repeated and passed.	
8	Recovery: isotherm at ambient temperature (25°C)	60	EUT off	
9	Final measurements	--	No visible damage and Function test passed.	



Unless otherwise agreed in writing, this document is issued by the Company subject to its General Conditions of Service printed overleaf, available on request or accessible at <https://www.sgs.com/en/Terms-and-Conditions>. Attention is drawn to the limitation of liability, indemnification and jurisdiction issues defined therein. Any holder of this document is advised that information contained hereon reflects the Company's findings at the time of its intervention only and within the limits of Client's instructions, if any. The Company's sole responsibility is to its Client and this document does not exonerate parties to a transaction from exercising all their rights and obligations under the transaction documents. This document cannot be reproduced except in full, without prior written approval of the Company. Any unauthorized alteration, forgery or falsification of the content or appearance of this document is unlawful and offenders may be prosecuted to the fullest extent of the law. Unless otherwise stated the results shown in this test report refer only to the sample(s) tested and such sample(s) are retained for 30 days only.

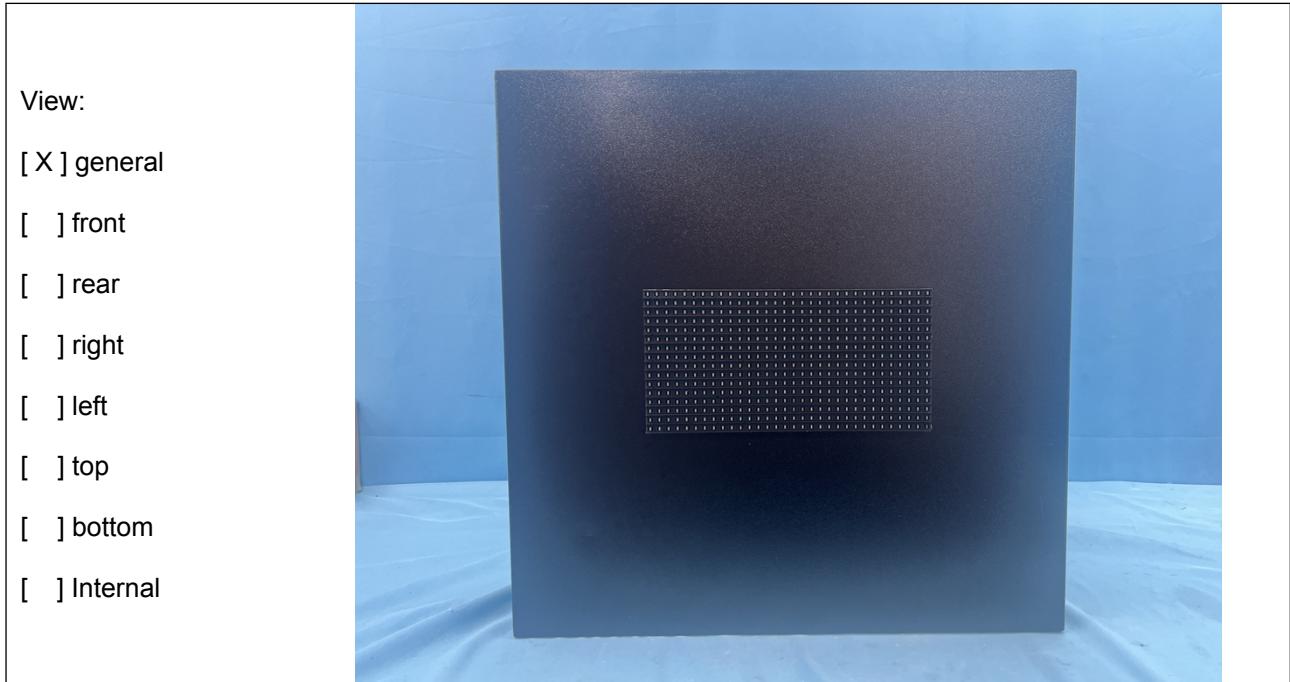
Attention: To check the authenticity of testing /inspection report & certificate, please contact us at telephone: (86-755) 8307 1443, or email: CN.Doccheck@sgs.com

SGS-CS (Guangzhou) Technical Services Co., Ltd. | No.198, Kezhu Road, Science City, Economic & Technological Development Area, Guangzhou, Guangdong, China 510663 | t (86-20) 82155555 | www.sgs.com.cn
Guangzhou Branch | 中国·广东·广州高新技术产业开发区科学城科珠路198号 | 邮编: 510663 | t (86-20) 82155555 | sgs.china@sgs.com

Member of the SGS Group (SGS SA)

Photo documents:

Details of: **General view of VMS10S-4535RGB**



Details of: **General view of VMS10S-4535RGB**




Unless otherwise agreed in writing, this document is issued by the Company subject to its General Conditions of Service printed overleaf, available on request or accessible at <https://www.sgs.com/en/Terms-and-Conditions>. Attention is drawn to the limitation of liability, indemnification and jurisdiction issues defined therein. Any holder of this document is advised that information contained hereon reflects the Company's findings at the time of its intervention only and within the limits of Client's instructions, if any. The Company's sole responsibility is to its Client and this document does not exonerate parties to a transaction from exercising all their rights and obligations under the transaction documents. This document cannot be reproduced except in full, without prior written approval of the Company. Any unauthorized alteration, forgery or falsification of the content or appearance of this document is unlawful and offenders may be prosecuted to the fullest extent of the law. Unless otherwise stated the results shown in this test report refer only to the sample(s) tested and such sample(s) are retained for 30 days only.

Attention: To check the authenticity of testing /inspection report & certificate, please contact us at telephone: (86-755) 8307 1443, or email: CN.Doccheck@sgs.com

SGS-CS Standards Technical Services Co., Ltd. | No.198, Kezhu Road, Science City, Economic & Technological Development Area, Guangzhou, Guangdong, China 510663 | t (86-20) 82155555 | www.sgsgroup.com.cn
Guangzhou Branch | 中国·广东·广州高新技术产业开发区科学城科珠路198号 | 邮编: 510663 | t (86-20) 82155555 | sgs.china@sgs.com

Member of the SGS Group (SGS SA)

Details of: General view of VMS16S-4535RGB

<p>View:</p> <p><input checked="" type="checkbox"/> general</p> <p><input type="checkbox"/> front</p> <p><input type="checkbox"/> rear</p> <p><input type="checkbox"/> right</p> <p><input type="checkbox"/> left</p> <p><input type="checkbox"/> top</p> <p><input type="checkbox"/> bottom</p> <p><input type="checkbox"/> Internal</p>	
---	--

Details of: General view of VMS16S-4535RGB

<p>View:</p> <p><input checked="" type="checkbox"/> general</p> <p><input type="checkbox"/> front</p> <p><input type="checkbox"/> rear</p> <p><input type="checkbox"/> right</p> <p><input type="checkbox"/> left</p> <p><input type="checkbox"/> top</p> <p><input type="checkbox"/> bottom</p> <p><input type="checkbox"/> Internal</p>	
---	--



SGS-CS Standards Technical Services Co., Ltd.
Guangzhou Branch

Unless otherwise agreed in writing, this document is issued by the Company subject to its General Conditions of Service printed overleaf, available on request or accessible at <https://www.sgs.com/en/Terms-and-Conditions>. Attention is drawn to the limitation of liability, indemnification and jurisdiction issues defined therein. Any holder of this document is advised that information contained hereon reflects the Company's findings at the time of its intervention only and within the limits of Client's instructions, if any. The Company's sole responsibility is to its Client and this document does not exonerate parties to a transaction from exercising all their rights and obligations under the transaction documents. This document cannot be reproduced except in full, without prior written approval of the Company. Any unauthorized alteration, forgery or falsification of the content or appearance of this document is unlawful and offenders may be prosecuted to the fullest extent of the law. Unless otherwise stated the results shown in this test report refer only to the sample(s) tested and such sample(s) are retained for 30 days only.

Attention: To check the authenticity of testing / inspection report & certificate, please contact us at telephone: (86-755) 8307 1443, or email: CN.Doccheck@sgs.com

No.198, Kezhu Road, Science City, Economic & Technological Development Area, Guangzhou, Guangdong, China 510663 t (86-20) 82155555 www.sgs.com.cn
中国·广东·广州高新技术产业开发区科学城科珠路198号 邮编: 510663 t (86-20) 82155555 sgs.china@sgs.com

Member of the SGS Group (SGS SA)

Details of: General view of VMS16S-4535RGB

<p>View:</p> <p><input checked="" type="checkbox"/> general</p> <p><input type="checkbox"/> front</p> <p><input type="checkbox"/> rear</p> <p><input type="checkbox"/> right</p> <p><input type="checkbox"/> left</p> <p><input type="checkbox"/> top</p> <p><input type="checkbox"/> bottom</p> <p><input type="checkbox"/> Internal</p>	
---	--

Details of: General view of VMS16S-4535RGB

<p>View:</p> <p><input checked="" type="checkbox"/> general</p> <p><input type="checkbox"/> front</p> <p><input type="checkbox"/> rear</p> <p><input type="checkbox"/> right</p> <p><input type="checkbox"/> left</p> <p><input type="checkbox"/> top</p> <p><input type="checkbox"/> bottom</p> <p><input type="checkbox"/> Internal</p>	
---	--



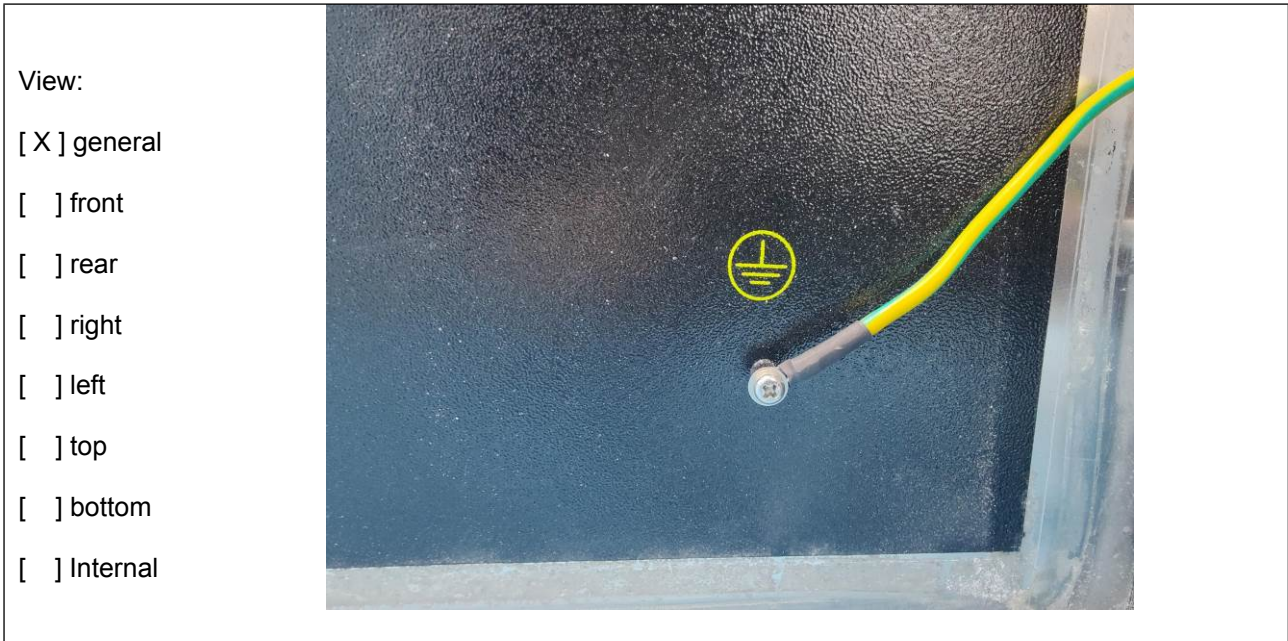
Unless otherwise agreed in writing, this document is issued by the Company subject to its General Conditions of Service printed overleaf, available on request or accessible at <https://www.sgs.com/en/Terms-and-Conditions>. Attention is drawn to the limitation of liability, indemnification and jurisdiction issues defined therein. Any holder of this document is advised that information contained hereon reflects the Company's findings at the time of its intervention only and within the limits of Client's instructions, if any. The Company's sole responsibility is to its Client and this document does not exonerate parties to a transaction from exercising all their rights and obligations under the transaction documents. This document cannot be reproduced except in full, without prior written approval of the Company. Any unauthorized alteration, forgery or falsification of the content or appearance of this document is unlawful and offenders may be prosecuted to the fullest extent of the law. Unless otherwise stated the results shown in this test report refer only to the sample(s) tested and such sample(s) are retained for 30 days only.

Attention: To check the authenticity of testing /inspection report & certificate, please contact us at telephone: (86-755) 8307 1443, or email: CN.Doccheck@sgs.com

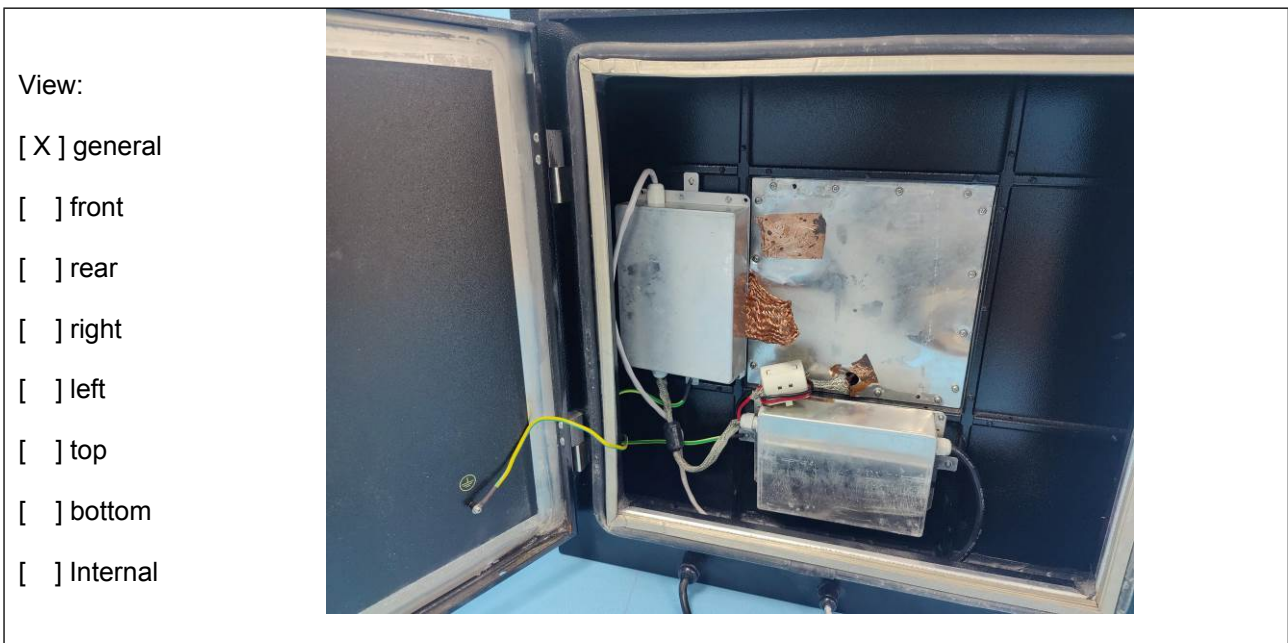
SGS-CT (Guangzhou Branch) Technical Services Co., Ltd. | No.198, Kezhu Road, Science City, Economic & Technological Development Area, Guangzhou, Guangdong, China 510663 | t (86-20) 82155555 | www.sgsgroup.com.cn
 Guangzhou Branch of SGS-CT (Guangzhou Branch) EEC Laboratory. | 中国·广东·广州高新技术产业开发区科学城科珠路198号 邮编: 510663 | t (86-20) 82155555 | sgs.china@sgs.com

Member of the SGS Group (SGS SA)

Details of: Earthing view of product



Details of: Internal view of product



SGS-CS Standards Technical Services Co., Ltd.
Guangzhou Branch, CMAA, CNAS, EEC Laboratory.

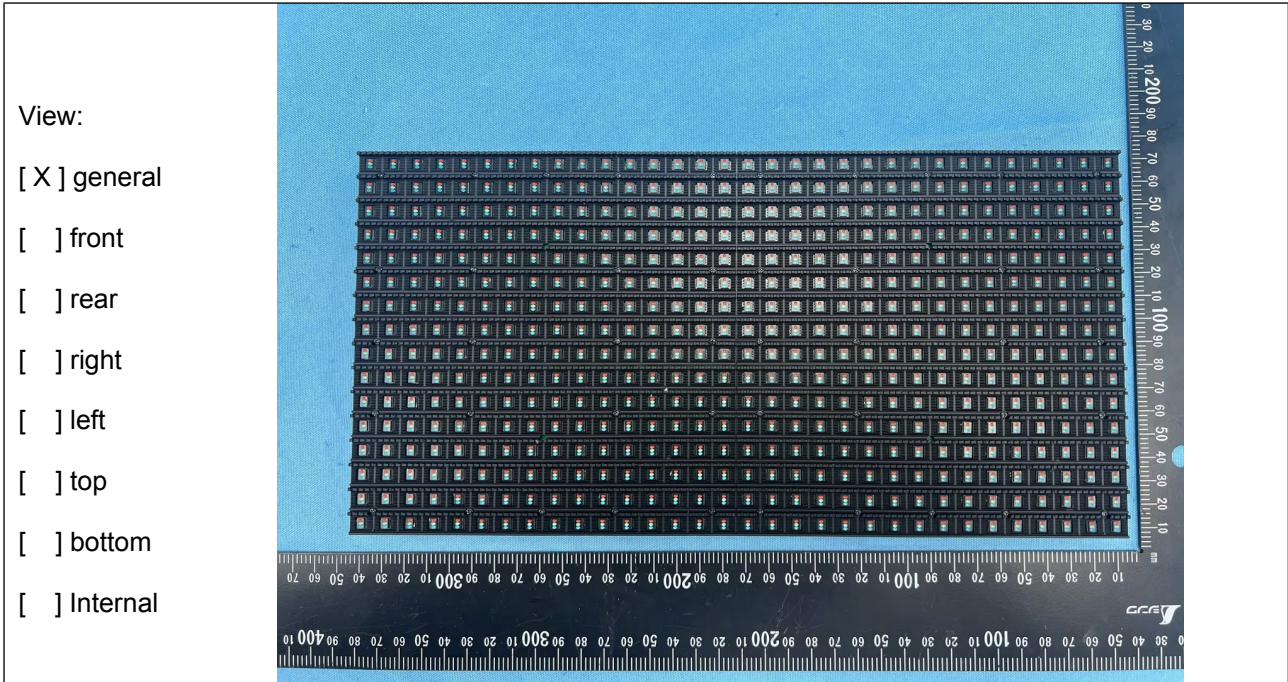
Unless otherwise agreed in writing, this document is issued by the Company subject to its General Conditions of Service printed overleaf, available on request or accessible at <https://www.sgs.com/en/Terms-and-Conditions>. Attention is drawn to the limitation of liability, indemnification and jurisdiction issues defined therein. Any holder of this document is advised that information contained hereon reflects the Company's findings at the time of its intervention only and within the limits of Client's instructions, if any. The Company's sole responsibility is to its Client and this document does not exonerate parties to a transaction from exercising all their rights and obligations under the transaction documents. This document cannot be reproduced except in full, without prior written approval of the Company. Any unauthorized alteration, forgery or falsification of the content or appearance of this document is unlawful and offenders may be prosecuted to the fullest extent of the law. Unless otherwise stated the results shown in this test report refer only to the sample(s) tested and such sample(s) are retained for 30 days only.

Attention: To check the authenticity of testing /inspection report & certificate, please contact us at telephone: (86-755) 8307 1443, or email: CN.Doccheck@sgs.com

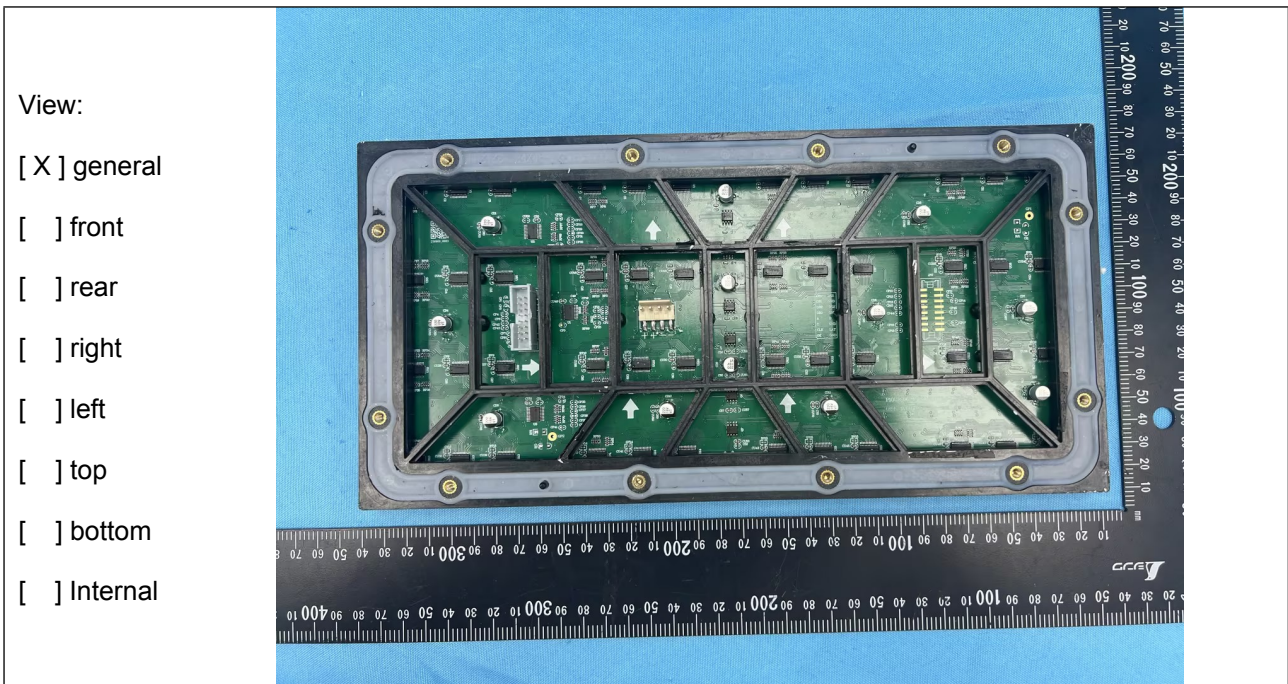
No.198, Kezhu Road, Science City, Economic & Technological Development Area, Guangzhou, Guangdong, China 510663 t (86-20) 82155555 www.sgs.com.cn
中国·广东·广州高新技术产业开发区科学城科珠路198号 邮编: 510663 t (86-20) 82155555 sgs.china@sgs.com

Member of the SGS Group (SGS SA)

Details of: **Partial view of VMS10S-4535RGB**



Details of: **Partial view of VMS10S-4535RGB**



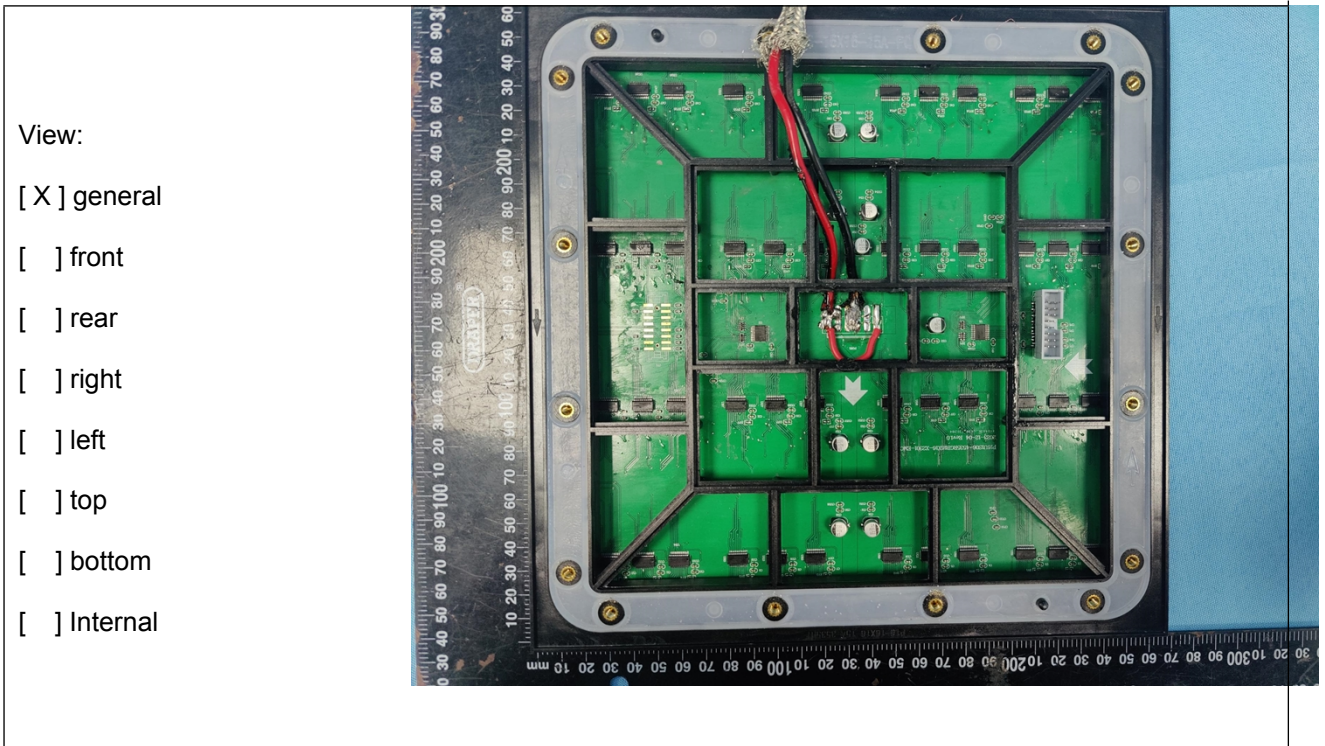
Unless otherwise agreed in writing, this document is issued by the Company subject to its General Conditions of Service printed overleaf, available on request or accessible at <https://www.sgs.com/en/Terms-and-Conditions>. Attention is drawn to the limitation of liability, indemnification and jurisdiction issues defined therein. Any holder of this document is advised that information contained hereon reflects the Company's findings at the time of its intervention only and within the limits of Client's instructions, if any. The Company's sole responsibility is to its Client and this document does not exonerate parties to a transaction from exercising all their rights and obligations under the transaction documents. This document cannot be reproduced except in full, without prior written approval of the Company. Any unauthorized alteration, forgery or falsification of the content or appearance of this document is unlawful and offenders may be prosecuted to the fullest extent of the law. Unless otherwise stated the results shown in this test report refer only to the sample(s) tested and such sample(s) are retained for 30 days only.

Attention: To check the authenticity of testing /inspection report & certificate, please contact us at telephone: (86-755) 8307 1443, or email: CN.Doccheck@sgs.com

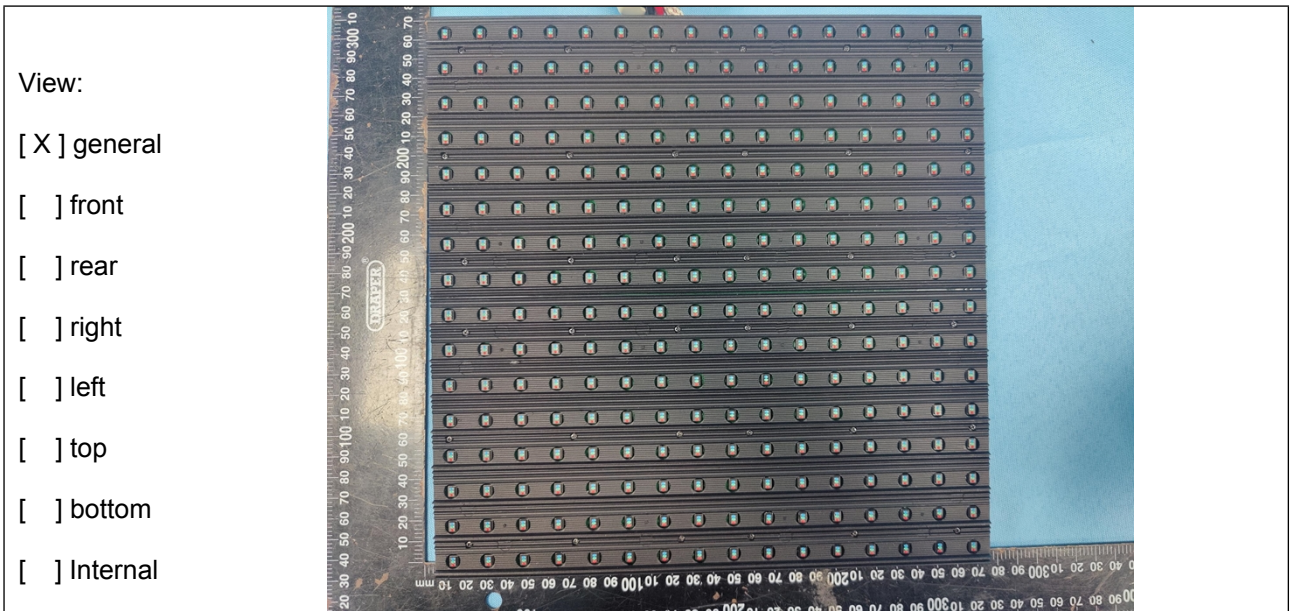
SGS-CS Standards Technical Services Co., Ltd. No.198, Kezhu Road, Science City, Economic & Technological Development Area, Guangzhou, Guangdong, China 510663 t (86-20) 82155555 www.sgs.com.cn
Guangzhou Branch of SGS Testing Services Co., Ltd. 中国·广东·广州高新技术产业开发区科学城科珠路198号 邮编: 510663 t (86-20) 82155555 sgs.china@sgs.com

Member of the SGS Group (SGS SA)

Details of: Partial view of VMS16S-4535RGB



Details of: Partial view of VMS16S-4535RGB



Unless otherwise agreed in writing, this document is issued by the Company subject to its General Conditions of Service printed overleaf, available on request or accessible at <https://www.sgs.com/en/Terms-and-Conditions>. Attention is drawn to the limitation of liability, indemnification and jurisdiction issues defined therein. Any holder of this document is advised that information contained hereon reflects the Company's findings at the time of its intervention only and within the limits of Client's instructions, if any. The Company's sole responsibility is to its Client and this document does not exonerate parties to a transaction from exercising all their rights and obligations under the transaction documents. This document cannot be reproduced except in full, without prior written approval of the Company. Any unauthorized alteration, forgery or falsification of the content or appearance of this document is unlawful and offenders may be prosecuted to the fullest extent of the law. Unless otherwise stated the results shown in this test report refer only to the sample(s) tested and such sample(s) are retained for 30 days only.

Attention: To check the authenticity of testing /inspection report & certificate, please contact us at telephone: (86-755) 8307 1443, or email: CN.Doccheck@sgs.com

SGS-CS Standards Technical Services Co., Ltd
Guangzhou Branch

No.198, Kezhu Road, Science City, Economic & Technological Development Area, Guangzhou, Guangdong, China 510663
中国·广东·广州高新技术产业开发区科学城科珠路198号

t (86-20) 82155555 www.sgs.com.cn
t (86-20) 82155555 sgs.china@sgs.com

Member of the SGS Group (SGS SA)

Details of: Power supply of product

View:

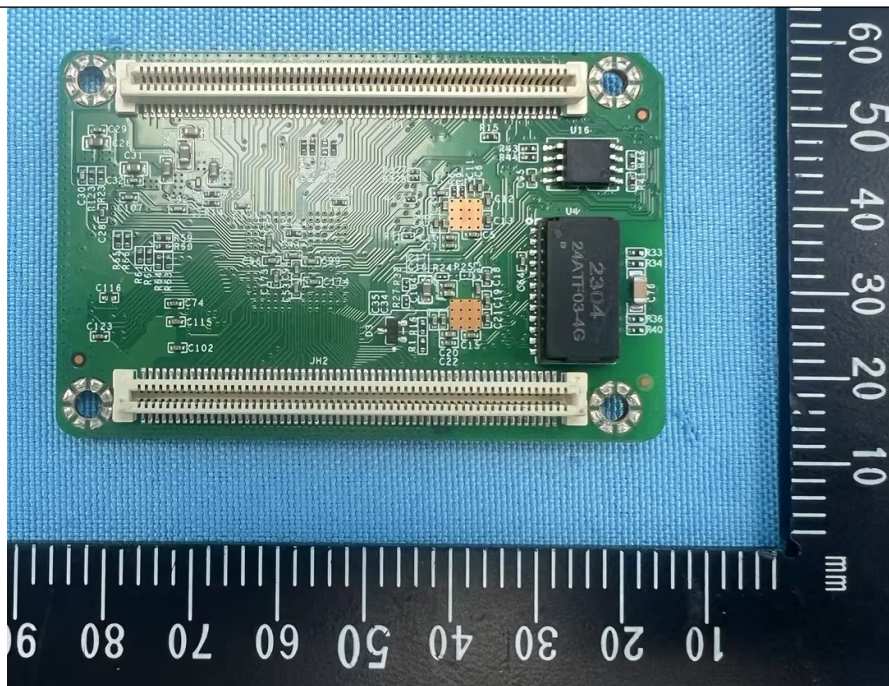
- general
- front
- rear
- right
- left
- top
- bottom
- Internal



Details of: Partial view of VMS10S-4535RGB

View:

- general
- front
- rear
- right
- left
- top
- bottom
- Internal

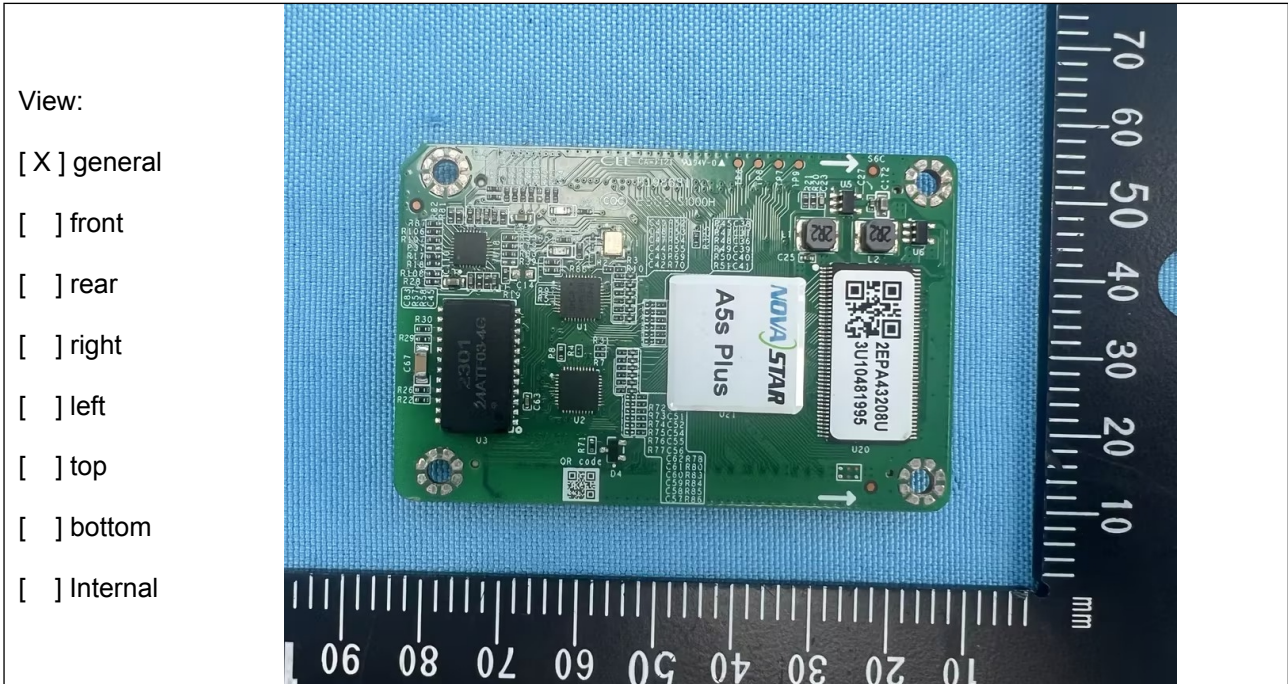


Unless otherwise agreed in writing, this document is issued by the Company subject to its General Conditions of Service printed overleaf, available on request or accessible at <https://www.sgs.com/en/Terms-and-Conditions>. Attention is drawn to the limitation of liability, indemnification and jurisdiction issues defined therein. Any holder of this document is advised that information contained hereon reflects the Company's findings at the time of its intervention only and within the limits of Client's instructions, if any. The Company's sole responsibility is to its Client and this document does not exonerate parties to a transaction from exercising all their rights and obligations under the transaction documents. This document cannot be reproduced except in full, without prior written approval of the Company. Any unauthorized alteration, forgery or falsification of the content or appearance of this document is unlawful and offenders may be prosecuted to the fullest extent of the law. Unless otherwise stated the results shown in this test report refer only to the sample(s) tested and such sample(s) are retained for 30 days only.

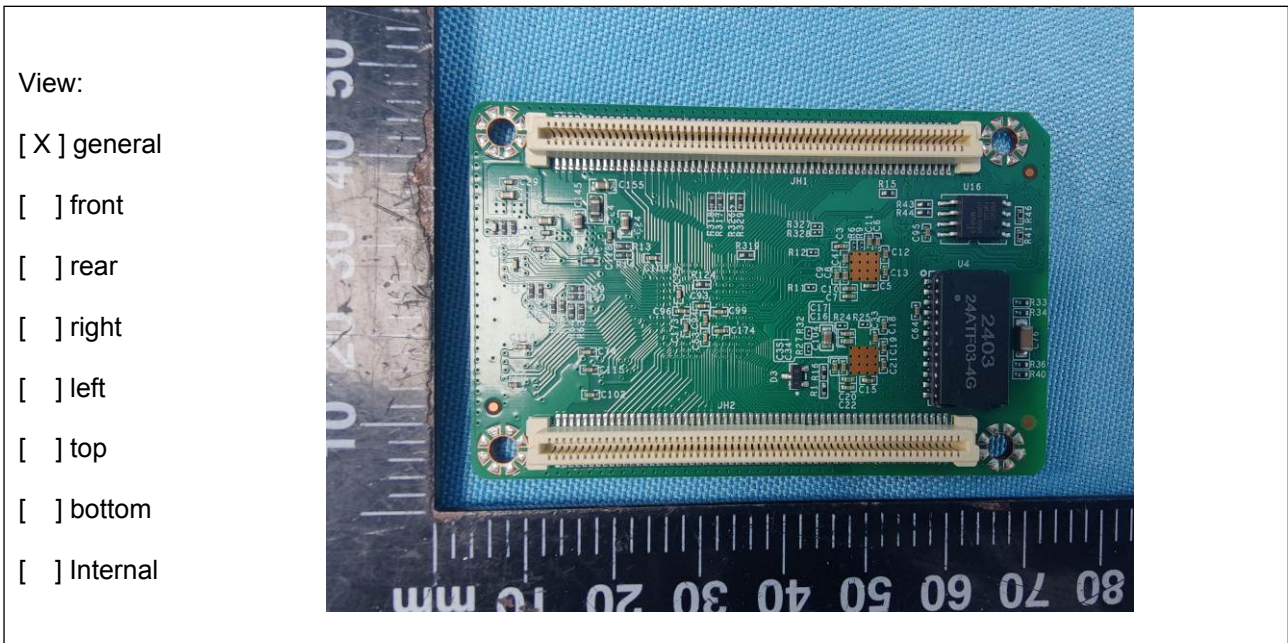
Attention: To check the authenticity of testing /inspection report & certificate, please contact us at telephone: (86-755) 8307 1443, or email: CN.Doccheck@sgs.com

SGS-CS Standards Technical Services Co., Ltd. | No.198, Kezhu Road, Science City, Economic & Technological Development Area, Guangzhou, Guangdong, China 510663 | t (86-20) 82155555 | www.sgs.com.cn
Guangzhou Branch | 中国·广东·广州高新技术产业开发区科学城科珠路198号 | 邮编: 510663 | t (86-20) 82155555 | sgs.china@sgs.com

Details of: **Partial view of VMS10S-4535RGB**



Details of: **Partial view of VMS16S-4535RGB**



Unless otherwise agreed in writing, this document is issued by the Company subject to its General Conditions of Service printed overleaf, available on request or accessible at <https://www.sgs.com/en/Terms-and-Conditions>. Attention is drawn to the limitation of liability, indemnification and jurisdiction issues defined therein. Any holder of this document is advised that information contained hereon reflects the Company's findings at the time of its intervention only and within the limits of Client's instructions, if any. The Company's sole responsibility is to its Client and this document does not exonerate parties to a transaction from exercising all their rights and obligations under the transaction documents. This document cannot be reproduced except in full, without prior written approval of the Company. Any unauthorized alteration, forgery or falsification of the content or appearance of this document is unlawful and offenders may be prosecuted to the fullest extent of the law. Unless otherwise stated the results shown in this test report refer only to the sample(s) tested and such sample(s) are retained for 30 days only.

Attention: To check the authenticity of testing /inspection report & certificate, please contact us at telephone: (86-755) 8307 1443, or email: CN.Doccheck@sgs.com

SGS-CS (China) Standards Technical Services Co., Ltd.
Guangzhou Branch, Inspection & Testing Services, EEC Laboratory.

No.198, Kezhu Road, Science City, Economic & Technological Development Area, Guangzhou, Guangdong, China 510663
中国·广东·广州高新技术产业开发区科学城科珠路198号 邮编: 510663

t (86-20) 82155555 www.sgs.com.cn
t (86-20) 82155555 sgs.china@sgs.com

Member of the SGS Group (SGS SA)

Details of: Partial view of VMS16S-4535RGB

View:

- general
- front
- rear
- right
- left
- top
- bottom
- Internal



--- End of Report ---



Unless otherwise agreed in writing, this document is issued by the Company subject to its General Conditions of Service printed overleaf, available on request or accessible at <https://www.sgs.com/en/Terms-and-Conditions>. Attention is drawn to the limitation of liability, indemnification and jurisdiction issues defined therein. Any holder of this document is advised that information contained hereon reflects the Company's findings at the time of its intervention only and within the limits of Client's instructions, if any. The Company's sole responsibility is to its Client and this document does not exonerate parties to a transaction from exercising all their rights and obligations under the transaction documents. This document cannot be reproduced except in full, without prior written approval of the Company. Any unauthorized alteration, forgery or falsification of the content or appearance of this document is unlawful and offenders may be prosecuted to the fullest extent of the law. Unless otherwise stated the results shown in this test report refer only to the sample(s) tested and such sample(s) are retained for 30 days only.

Attention: To check the authenticity of testing /inspection report & certificate, please contact us at telephone: (86-755) 8307 1443, or email: CN.Doccheck@sgs.com

SGS-CSL Standards Technical Services Co., Ltd.
Guangzhou Branch

No.198, Kezhu Road, Science City, Economic & Technological Development Area, Guangzhou, Guangdong, China 510663
中国·广东·广州高新技术产业开发区科学城科珠路198号

t (86-20) 82155555 www.sgs.com.cn
t (86-20) 82155555 sgs.china@sgs.com

Member of the SGS Group (SGS SA)